



The Printer Working Group

May 17, 2024  
Candidate Standard 5100.5-2024

## IPP Document Object v1.2 (DOCOBJECT)

Status: Approved

Abstract: This specification defines the IPP Document object and its associated attributes, values, group, and operations.

This is a PWG Candidate Standard. For a definition of a "PWG Candidate Standard", see:

<https://ftp.pwg.org/pub/pwg/general/process/pwg-process-4.pdf>

This specification is available electronically at:

<https://ftp.pwg.org/pub/pwg/candidates/cs-ippdocobject12-20240517-5100.5.docx>  
<https://ftp.pwg.org/pub/pwg/candidates/cs-ippdocobject12-20240517-5100.5.pdf>

Copyright © 2004-2024 The Printer Working Group. All rights reserved.

This document may be copied and furnished to others, and derivative works that comment on, or otherwise explain it or assist in its implementation may be prepared, copied, published and distributed, in whole or in part, without restriction of any kind, provided that the above copyright notice, this paragraph and the title of the document as referenced below are included on all such copies and derivative works. However, this document itself may not be modified in any way, such as by removing the copyright notice or references to the IEEE-ISTO and the Printer Working Group, a program of the IEEE-ISTO.

Title: *IPP Document Object v1.2 (DOCOBJECT)*

The IEEE-ISTO and the Printer Working Group DISCLAIM ANY AND ALL WARRANTIES, WHETHER EXPRESS OR IMPLIED INCLUDING (WITHOUT LIMITATION) ANY IMPLIED WARRANTIES OF MERCHANTABILITY OR FITNESS FOR A PARTICULAR PURPOSE.

The Printer Working Group, a program of the IEEE-ISTO, reserves the right to make changes to the document without further notice. The document may be updated, replaced or made obsolete by other documents at any time.

The IEEE-ISTO takes no position regarding the validity or scope of any intellectual property or other rights that might be claimed to pertain to the implementation or use of the technology described in this document or the extent to which any license under such rights might or might not be available; neither does it represent that it has made any effort to identify any such rights.

The IEEE-ISTO invites any interested party to bring to its attention any copyrights, patents, or patent applications, or other proprietary rights which may cover technology that may be required to implement the contents of this document. The IEEE-ISTO and its programs shall not be responsible for identifying patents for which a license may be required by a document and/or IEEE-ISTO Industry Group Standard or for conducting inquiries into the legal validity or scope of those patents that are brought to its attention. Inquiries may be submitted to the IEEE-ISTO by e-mail at: [ieee-isto@ieee.org](mailto:ieee-isto@ieee.org).

The Printer Working Group acknowledges that the IEEE-ISTO (acting itself or through its designees) is, and shall at all times be the sole entity that may authorize the use of certification marks, trademarks, or other special designations to indicate compliance with these materials.

Use of this document is wholly voluntary. The existence of this document does not imply that there are no other ways to produce, test, measure, purchase, market, or provide other goods and services related to its scope.

## About the IEEE-ISTO

The IEEE-ISTO is a not-for-profit corporation offering industry groups an innovative and flexible operational forum and support services. The IEEE-ISTO provides a forum not only to develop standards, but also to facilitate activities that support the implementation and acceptance of standards in the marketplace. The organization is affiliated with the IEEE (<http://www.ieee.org/>) and the IEEE Standards Association (<http://standards.ieee.org/>).

For additional information regarding the IEEE-ISTO and its industry programs visit:

<https://www.ieee-isto.org/>

## About the IEEE-ISTO PWG

The Printer Working Group (or PWG) is a Program of the IEEE Industry Standards and Technology Organization (ISTO) with member organizations including printer manufacturers, print server developers, operating system providers, network operating system providers, network connectivity vendors, and print management application developers. The PWG is chartered to make printers and the applications and operating systems supporting them work together better. All references to the PWG in this document implicitly mean “The Printer Working Group, a Program of the IEEE ISTO.”

To meet this objective, the PWG documents the results of their work as open standards that define print related protocols, interfaces, procedures, and conventions. A PWG standard is a stable, well understood, and technically competent specification that is widely used with multiple independent and interoperable implementations. Printer manufacturers and vendors of printer related software benefit from the interoperability provided by voluntary conformance to these standards.

For additional information regarding the Printer Working Group visit:

<https://www.pwg.org>

Contact information:

The Printer Working Group  
c/o The IEEE Industry Standards and Technology Organization  
445 Hoes Lane  
Piscataway, NJ 08854  
USA

## Table of Contents

1. Introduction.....	7
2. Terminology.....	7
2.1 Conformance Terminology.....	7
2.2 Printing Terminology .....	7
2.3 Protocol Role Terminology.....	8
2.4 Acronyms and Organizations.....	9
3. Requirements.....	9
3.1 Rationale.....	9
3.2 Use Cases .....	9
3.2.1 Specify Per-Document Print Intent.....	9
3.2.2 See a List of Documents in a Job .....	10
3.2.3 Cancel a Single Document.....	10
3.3 Exceptions .....	10
3.4 Out of Scope.....	10
3.5 Design Requirements.....	10
4. Model.....	11
4.1 Document Object.....	11
4.2 Operations .....	11
4.3 Job and Document Template Attributes .....	12
5. New Operations.....	13
5.1 Document Operations .....	13
5.1.1 Cancel-Document.....	13
5.1.2 Get-Document-Attributes.....	15
5.1.3 Set-Document-Attributes .....	18
5.2 Job Operations .....	21
5.2.1 Get-Documents.....	21
6. New Attributes .....	24
6.1 Document Description Attributes .....	24
6.1.1 document-name (name(MAX)).....	24
6.2 Document Status Attributes .....	24
6.2.1 document-charset (charset) .....	26
6.2.2 document-format-detected (mimeMediaType) .....	26
6.2.3 document-message (text(MAX)) .....	26
6.2.4 document-number (integer(1:MAX)) .....	26
6.2.5 last-document (boolean).....	26
6.3 Document Template Attributes .....	26
6.4 Operation Attributes .....	27
6.4.1 document-charset (charset) .....	27
6.4.2 document-number (integer(1:MAX)) .....	27
6.5 Printer Description Attributes .....	28
6.5.1 document-creation-attributes-supported (1setOf keyword).....	28
7. New Attribute Group Tags .....	28
7.1 document-attributes-tag .....	28
8. Additional Semantics for Existing Operations.....	29
8.1 Cancel-Job: "document-state" and "document-state-reasons" .....	29

8.2 Hold-Job and Release-Job: "document-state-reasons" ..... 29

8.3 Print-Job, Print-URI: Document Object and Attributes ..... 29

    8.3.1 Print-Job/Print-URI Response ..... 30

8.4 Send-Document: Document Object and Attributes ..... 31

    8.4.1 Send-Document Request ..... 31

    8.4.2 Send-Document Response ..... 31

8.5 Send-URI: Document Object and Attributes ..... 32

    8.5.1 Send-URI Request ..... 33

    8.5.2 Send-URI Response ..... 33

9. Additional Values for Existing Attributes ..... 34

    9.1 notify-events (1setOf type2 keyword) ..... 34

    9.2 operations-supported (1setOf type2 enum) ..... 34

    9.3 requested-attributes (1setOf type2 keyword) ..... 35

10. Conformance Requirements ..... 35

    10.1 Printer Conformance Requirements ..... 35

    10.2 Client Conformance Requirements ..... 35

11. Internationalization Considerations ..... 36

12. Security and Privacy Considerations ..... 37

13. IANA Considerations ..... 37

    13.1 Attribute Registrations ..... 37

    13.2 keyword Registrations ..... 39

    13.3 enum Registrations ..... 39

    13.4 Operation Registrations ..... 40

    13.5 Attribute Group Registrations ..... 40

14. Overview of Changes ..... 41

    14.1 IPP Document Object v1.2 ..... 41

    14.2 IPP Document Object v1.1 ..... 41

15. References ..... 42

    15.1 Normative References ..... 42

    15.2 Informative References ..... 44

16. Author ..... 45

### List of Tables

Table 1 - IPP Operations..... 12  
Table 2 - Document State Transitions for Cancel-Documents ..... 14  
Table 3 - Allowed Document States for the Set-Documents-Attributes operation ..... 18  
Table 4 - Document Status Attributes..... 24  
Table 5 - Document Template Attributes..... 26  
Table 6 - Operation Attributes Copied to Document Objects ..... 29  
Table 7 - Returned Document Status Attributes ..... 29  
Table 8 – Operation-id Values ..... 34

### List of Figures

Figure 1 - Document Object Life Cycle..... 11

## 1. Introduction

This specification extends the Internet Printing Protocol/1.1 [STD92] by defining the IPP Document object and its associated attributes, values, group, and operations. The IPP Job object is extended to contain zero or more addressable Document objects representing the Documents submitted for and operated on by the Job.

This specification updates portions of the previous version of this specification [PWG5100.5-2019]. A list of changes can be found in section 14.

## 2. Terminology

### 2.1 Conformance Terminology

Capitalized terms, such as MUST, MUST NOT, RECOMMENDED, REQUIRED, SHOULD, SHOULD NOT, MAY, and OPTIONAL, have special meaning relating to conformance as defined in Key words for use in RFCs to Indicate Requirement Levels [BCP14]. This specification defines the following additional capitalized conformance terms:

*CONDITIONALLY REQUIRED*: A MUST conformance requirement that applies only when a specified condition is true.

*DEPRECATED*: A SHOULD NOT conformance requirement for previously defined and approved protocol elements that are planned to be removed from use.

*OBSOLETE*: A MUST NOT conformance requirement for previously defined and approved protocol elements that have been removed from use.

### 2.2 Printing Terminology

The following printing terms are used in this document:

*Attribute Precedence*: The rules which dictate which attribute value takes precedence when the same attribute is supplied at different points in the workflow with different values, such as at both the Job Level and the Document Level.

*Document*: An object created and managed by a Printer that contains description, processing, and status information. A Document object may have attached data and is bound to a single Job.

28 *Document Creation Operation*: Operations that create Document objects including Print-Job,  
29 Print-URI, Send-Document, and Send-URI as defined in the IPP/1.1 Model and Semantics  
30 [STD92].

31 *Document Level*: Operation and Document Template attributes supplied in the Send-  
32 Document and Send-URI operations are referred to as being supplied at the Document  
33 Level. Attributes supplied in the Print-Job and Print-URI operations are considered as being  
34 supplied at the Job Level only, *not* also at the Document Level, even though Print-Job and  
35 Print-URI also create Document objects.

36 *Document Template*: An attribute that the Client supplies in a Send-Document or Send-URI  
37 request in the Document attributes group, e.g., “media”.

38 *Honor*: A Printer is said to honor an attribute supplied by the Client if the Printer supports  
39 the attribute and supplied value and conforms to the defined semantics.

40 *Job*: An object created and managed by a Printer that contains description, processing, and  
41 status information. The Job also contains zero or more Document objects.

42 *Job Creation Operation*: Operations that create Job objects including Create-Job, Print-Job,  
43 and Print-URI as defined in the IPP/1.1 Model and Semantics [STD92].

44 *Job Level*: Operation and Job Template attributes supplied in Print-Job, Print-URI, and  
45 Create-Job requests are referred to as being supplied at the Job Level.

46 *Logical Device*: a print server, software service, or gateway that processes jobs and either  
47 forwards or stores the processed job or uses one or more Physical Devices to render output  
48 [STD92].

49 *Output Device*: a single Logical or Physical Device [STD92].

50 *Physical Device*: a hardware implementation of an endpoint device, e.g., a marking engine,  
51 a fax modem, etc. [STD92]

## 52 **2.3 Protocol Role Terminology**

53 The following protocol roles are defined to specify unambiguous conformance requirements:

54 *Client*: Initiator of outgoing connections and sender of outgoing operation requests  
55 (Hypertext Transfer Protocol -- HTTP/1.1 [STD99] User Agent).

56 *Printer*: Listener for incoming connections and receiver of incoming operation requests  
57 (Hypertext Transfer Protocol -- HTTP/1.1 [STD99] Server) that represents one or more  
58 Physical Devices or a Logical Device.



## 59 **2.4 Acronyms and Organizations**

60 *IANA*: Internet Assigned Numbers Authority, <https://www.iana.org/>

61 *IETF*: Internet Engineering Task Force, <https://www.ietf.org/>

62 *ISO*: International Organization for Standardization, <https://www.iso.org/>

63 *PWG*: Printer Working Group, <https://www.pwg.org/>

## 64 **3. Requirements**

### 65 **3.1 Rationale**

66 The Internet Printing Protocol/1.1 [STD92] defines the IPP Model and Semantics, including  
67 abstract objects for a Printer that processes Jobs and the Jobs themselves which process  
68 Documents. Given the need to directly address Documents in a Job, the IPP Document  
69 Object v1.2 should:

- 70 1. Define an abstract IPP Document object and its attributes;
- 71 2. Define new IPP operations for the IPP Document object; and
- 72 3. Extend existing IPP operations as needed to support the IPP Document object.

73 Rationale for the changes from the previous versions of this specification can be found in  
74 section 14.

### 75 **3.2 Use Cases**

#### 76 **3.2.1 Specify Per-Document Print Intent**

77 Jane is printing a multi-volume report and would like the output printed together. She uses  
78 an application on her computer to select each volume in the report and a shipping envelope.  
79 She then initiates a print action, specifying the media and finishing processes for each  
80 volume and the media for the shipping envelope. The printer processes all of the documents  
81 as a single job, placing the hardcopy output in a mailbox together.

### 82 **3.2.2 See a List of Documents in a Job**

83 John has submitted a multi-document job to a printer but cannot remember if he included all  
84 of the documents needed. He uses an application on his mobile device to query the list of  
85 documents in the print job and display them on the screen.

### 86 **3.2.3 Cancel a Single Document**

87 Bob has submitted a multi-document job to a printer but realizes there was a typographical  
88 error in one of the documents that has not yet printed. He uses an application on his  
89 computer to view the list of jobs on the printer, views the list of documents in the job he  
90 submitted, and initiates a cancel action for the document containing the error.

## 91 **3.3 Exceptions**

92 There are no exceptions defined for this specification.

## 93 **3.4 Out of Scope**

94 The following are considered out of scope for this specification:

- 95 1. Definition of copy or page level semantics; and
- 96 2. Definition of per-page or per-copy overrides.

## 97 **3.5 Design Requirements**

98 The design requirements for this specification are:

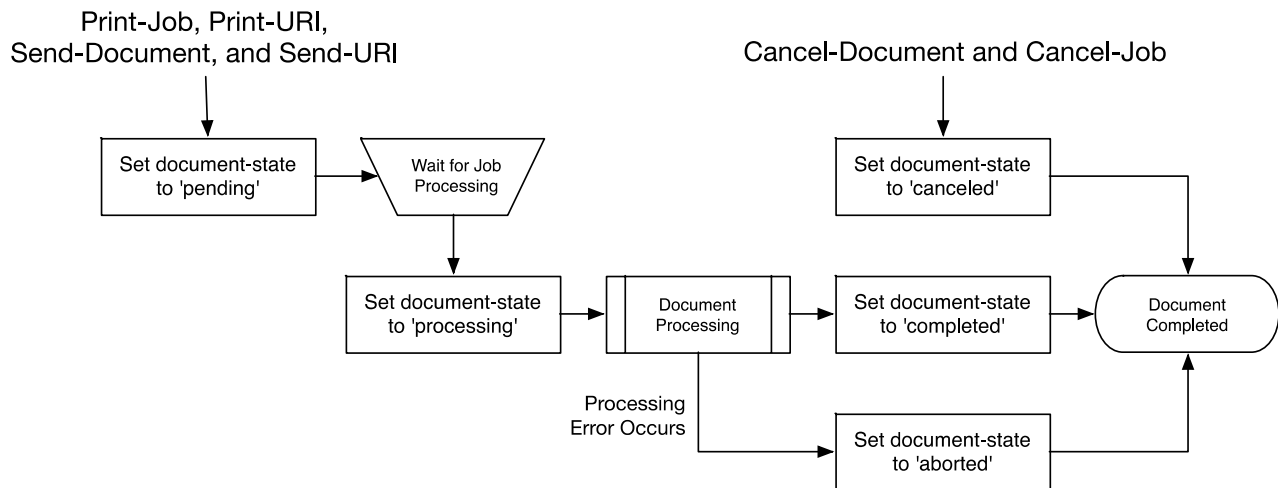
- 99 1. Define an abstract IPP Document object and its semantics;
- 100 2. Define an attribute group tag for attributes of an IPP Document object;
- 101 3. Define attributes and values to describe an IPP Document object;
- 102 4. Define operations for querying and manipulating IPP Document objects;
- 103 5. Extend existing operations to explicitly create IPP Document objects;
- 104 6. Define security requirements necessary to support IPP Document objects; and
- 105 7. Define sections to register all objects, attribute groups, attributes, values, and
- 106 operations with IANA.
- 107

108 **4. Model**

109 The Internet Printing Protocol/1.1 [STD92] defines an object model containing a Printer that  
 110 processes Jobs and a Job that processes Documents. This specification extends the Model  
 111 with an addressable Document object with its own attributes and state. Printers MAY support  
 112 multiple Documents per Job.

113 **4.1 Document Object**

114 The Document object represents a single Document in a Job that contains Document-  
 115 specific Description, Status, and Template attributes. Document Description attributes  
 116 provide information about the Document, Document Status attributes provide state  
 117 information for the Document, and Document Template attributes override the  
 118 corresponding Job Template attributes for the Document. A Document object also contains  
 119 the Document data and/or a URI that references the Document data. Figure 1 shows the life  
 120 cycle of the Document object.



121

122

**Figure 1 - Document Object Life Cycle**

123 **4.2 Operations**

124 The Print-Job and Print-URI operations [STD92] create a Job object containing a single  
 125 Document object while the Create-Job operation [STD92] creates a Job object with no  
 126 Document objects. The Send-Document and Send-URI operations [STD92] add Document  
 127 objects to the specified Job object. Printers conforming to this specification MUST support  
 128 the Create-Job and Send-Document operations.

129 This specification extends the Send-Document and Send-URI operations to accept  
 130 Document Template attributes in the Document Attributes group. The Document Template

131 attributes are applied to the Document object being created, overriding any corresponding  
 132 Job Template attributes supplied at the Job Level which allows the Client to vary the  
 133 Document Template attributes between Document objects in a single Job.

134 This specification also defines one new Job operation and four new Document operations.  
 135 Table 1 lists the operations and their conformance requirements.

136 **Table 1 - IPP Operations**

Operation	Target	Conformance	Reference
Cancel-Document	Document	MUST	Section 5.1.1
Create-Job	Printer	MUST	STD 92
Get-Document-Attributes	Document	MUST	Section 5.1.2
Get-Documents	Job	MUST	Section 5.2.1
Print-Job	Printer	MUST	STD 92, Section 8.3
Print-URI	Printer	MAY	STD 92, Section 8.3
Send-Document	Job	MUST	STD 92, Section 8.4
Send-URI	Job	MAY	STD 92, Section 8.5
Set-Document-Attributes	Document	MAY	Section 5.1.3

137 **4.3 Job and Document Template Attributes**

138 Clients OPTIONALLY supply Job Template attributes in Create-Job, Print-Job, and Print-  
 139 URI requests, and OPTIONALLY supply Document Template attributes in Print-Job, Print-  
 140 URI, Send-Document, and Send-URI requests. Job Template attributes apply to the Job as  
 141 a whole. Document Template attributes apply only to the corresponding Document object.

142 Printers MUST support the following Attribute Precedence from highest to lowest when  
 143 processing a Document:

- 144 1. Document Level - The Document Template attributes supplied in the Document  
 145 Creation request or a subsequent Set-Document-Attributes request;
- 146 2. Job Level - The Job Template attributes supplied in the Job Creation request or  
 147 a subsequent Set-Job-Attributes request; and
- 148 3. Printer Default - The Printer Default attributes as supplied by the manufacturer  
 149 or configured by the operator or administrator using a Set-Printer-Attributes  
 150 request.

151 Note: Depending on the value of the "pdl-override-supported" Printer Description attribute  
 152 [STD92], device commands embedded in the Document data could override attributes  
 153 specified at any of the previous levels.

## 154 **5. New Operations**

155 This section defines the new IPP operations for this specification.

156 Note: The Internet Printing Protocol/1.1 [STD92] deprecates the "job-uri" operation attribute  
157 for specifying the target Job and recommends that Clients send the "printer-uri" and "job-id"  
158 operation attributes instead.

### 159 **5.1 Document Operations**

#### 160 **5.1.1 Cancel-Document**

161 This REQUIRED Document operation allows a Client to cancel a specified Document in a  
162 specified Print Job any time from the time the Document is created up to, but not including,  
163 the time that the Document is completed, canceled, or aborted. Since a Document might  
164 already be printing by the time a Cancel-Document request is received, some media sheet  
165 pages might be printed before the Document processing is actually terminated.

166 The Cancel-Document operation does not remove the Document from the Job and Printer,  
167 but only sets the specified Document's "document-state" Document Status attribute to  
168 'canceled' and the Document's "document-state-reasons" Document Status attribute with  
169 'canceled-by-user' or 'canceled-by-operator'. If the Job object is printed again using  
170 operations such as Resubmit-Job [PWG5100.11], any canceled Documents are also printed  
171 again. Thus Cancel-Document has the same semantics as Cancel-Job [STD92] which only  
172 cancels the processing of the Job and doesn't delete the Job object itself.

173 The Printer MUST accept or reject the request based on the Document's current state and  
174 transition the Document to the indicated new state as shown in Table 2.

175 Access Rights: Only the Job Owner or an Operator or Administrator of the Printer can  
176 perform this operation. Otherwise, the Printer MUST reject the operation and return 'client-  
177 error-forbidden', 'client-error-not-authenticated', or 'client-error-not-authorized' as  
178 appropriate.

179

180

**Table 2 - Document State Transitions for Cancel-Document**

<b>Current "document-state"</b>	<b>New "document-state"</b>	<b>Printer's response status code and action:</b>
'pending'	'canceled'	'successful-ok'
'processing'	'canceled'	'successful-ok'
'processing'	'processing'	'successful-ok' (note 1)
'processing'	'processing'	'client-error-not-possible' (note 2)
'completed'	'completed'	'client-error-not-possible'
'canceled'	'canceled'	'client-error-not-possible'
'aborted'	'aborted'	'client-error-not-possible'

181 Note 1: If the implementation requires some measurable time to cancel the  
 182 Document in the 'processing' state, the Printer MUST add the 'processing-to-stop-  
 183 point' value to the Document's "document-state-reasons" attribute and then  
 184 transition the Document to the 'canceled' state when the processing ceases.

185 Note 2: If the Document object already has the 'processing-to-stop-point' value in its  
 186 "document-state-reasons" attribute, then the Printer MUST reject the Cancel-  
 187 Document request.

188 **5.1.1.1 Cancel-Document Request**

189 The following groups of attributes are part of the Cancel-Document request:

190 Group 1: Operation Attributes

191 Natural Language and Character Set:

192 The "attributes-charset" and "attributes-natural-language" attributes as  
 193 described in [STD92].

194 Target:

195 Either a) the "printer-uri" (uri) and "job-id" (integer(1:MAX)) or b) the "job-uri"  
 196 (uri) operation attribute(s) [STD92] which define the target Job object for this  
 197 operation, followed by the "document-number" (integer(1:MAX)) operation  
 198 attribute which defines the target Document object for this operation. If the  
 199 Client omits the "document-number" operation attribute, the Printer MUST  
 200 reject the request and return the 'client-error-bad-request' status code.

201 Requesting User Name:

202 The "requesting-user-name" (name(MAX)) attribute SHOULD be supplied by  
 203 the Client as described in [STD92].

204 "document-message" (text(MAX)):

205 The Client MAY supply this attribute. If supported by the Printer, the Printer  
206 MUST also support the corresponding "document-message" (text(MAX))  
207 Document Status attribute (see section 6.2.3) and copy the value to the  
208 Document's "document-message" attribute.

### 209 5.1.1.2 Cancel-Document Response

210 The following groups of attributes are part of the Cancel-Document response:

211 Group 1: Operation Attributes

212 Status Message:

213 In addition to the REQUIRED status code returned in every response, the  
214 response OPTIONALLY includes a "status-message" (text(255)) and/or a  
215 "detailed-status-messages" (text(MAX)) Operation attribute as described in  
216 [STD92].

217 Natural Language and Character Set:

218 The "attributes-charset" and "attributes-natural-language" attributes as  
219 described in [STD92].

220 Group 2: Unsupported Attributes

221 See [STD92] for details on returning Unsupported Attributes.

### 222 5.1.2 Get-Document-Attributes

223 This REQUIRED Document operation allows a Client to request the values of selected  
224 attributes of a Document object. The Printer MUST only return attributes that were submitted  
225 by a Client or generated by the Printer.

226 The Client requests attributes using the "requested-attributes (keyword)" operation attribute  
227 [STD92] which lists the attribute names and groups of interest. For Document objects the  
228 possible names of attribute groups are:

229 'document-template': The subset of Document Template that the implementation  
230 supports for Document objects.

231 'document-description': The subset of Document Description and Document Status  
232 attributes that the implementation supports for Document objects.

233 'all': All attributes that the implementation supports for Document objects.

234 Since a Client MAY request specific attributes or named groups, there is a potential that  
235 there is some overlap. For example, if a Client requests 'document-name' and 'document-  
236 description', the Client is actually requesting the "document-name" attribute once by naming  
237 it explicitly and once by inclusion in the 'document-description' group. In such cases, the  
238 Printer returns the attribute only once in the response even if it is requested multiple times.  
239 The Client SHOULD NOT request the same attribute in multiple ways.

240 Printers MUST support all group names and MUST return all supported attributes belonging  
241 to the group.

242 Access Rights: Only the Job Owner or an Operator or Administrator of the Printer can  
243 perform this operation. Otherwise, the Printer MUST reject the operation and return 'client-  
244 error-forbidden', 'client-error-not-authenticated', or 'client-error-not-authorized' as  
245 appropriate.

### 246 **5.1.2.1 Get-Document-Attributes Request**

247 The following groups of attributes are part of the Get-Document-Attributes request:

248 Group 1: Operation Attributes

249 Natural Language and Character Set:

250 The "attributes-charset" and "attributes-natural-language" attributes as  
251 described in [STD92].

252 Target:

253 Either a) the "printer-uri" (uri) and "job-id" (integer(1:MAX)) or b) the "job-uri"  
254 (uri) operation attribute(s) [STD92] which define the target Job object for this  
255 operation, followed by the "document-number" (integer(1:MAX)) operation  
256 which defines the target Document object for this operation. If the Client  
257 omits the "document-number" operation attribute, the Printer MUST reject the  
258 request and return the 'client-error-bad-request' status code.

259 Requesting User Name:

260 The "requesting-user-name" (name(MAX)) attribute SHOULD be supplied by  
261 the Client as described in [STD92].

262 "requested-attributes" (1setOf keyword):

263 The Client OPTIONALLY supplies and the Printer MUST support this  
264 attribute, which is a list of Document attribute names and/or attribute group  
265 names that are returned to the Client for each Document object. If the Client  
266 does not supply this attribute, the Printer MUST respond as if the Client had  
267 supplied this attribute with the single value 'all'.



### 268 5.1.2.2 Get-Document-Attributes Response

269 The following groups of attributes are part of the Get-Document-Attributes response:

270 Group 1: Operation Attributes

271 Status Message:

272 In addition to the REQUIRED status code returned in every response, the  
273 response OPTIONALLY includes a "status-message" (text(255)) and/or a  
274 "detailed-status-messages" (text(MAX)) Operation attribute as described in  
275 [STD92].

276 Natural Language and Character Set:

277 The "attributes-charset" and "attributes-natural-language" attributes as  
278 described in [STD92]. The "attributes-natural-language" MAY be the natural  
279 language of the Document object rather than the one in the Get-Document-  
280 Attributes request.

281 Group 2: Unsupported Attributes

282 See [STD92] for details on returning Unsupported Attributes.

283 The response MAY contain the "requested-attributes" operation attribute with  
284 any supplied values (attribute keywords) that were requested by the Client  
285 but are not supported by the Printer. If the Printer does return unsupported  
286 attributes referenced in the "requested-attributes" operation attribute and that  
287 attribute included group names such as 'all', the unsupported attributes  
288 MUST NOT include attributes described in the standard but not supported by  
289 the implementation.

290 Group 3: Document Attributes

291 The Printer responds with the Document Description, Document Status, and  
292 Document Template attributes for each returned Document object as  
293 requested by the "requested-attributes" operation attribute supplied by the  
294 Client in the request. The Printer ignores (does not respond with) any  
295 requested attribute or value which is not supported or which is restricted by  
296 the security policy in force, including whether the requesting user is the Job  
297 owner. However, the Printer MUST respond with the 'unknown' out of band  
298 value [STD92] for any supported attribute (including all REQUIRED  
299 attributes) for which the Printer does not know the value, unless it would  
300 violate the security policy.

301 **5.1.3 Set-Document-Attributes**

302 This OPTIONAL Document operation allows a Client to set the values of the attributes of a  
 303 Document object after the Document object is submitted to the Printer. In the request, the  
 304 Client supplies the set of Document attributes and values that are to be set. In the response,  
 305 the Printer returns success or rejects the entire request with indications of which attribute or  
 306 attributes could not be set.

307 This operation is similar to the Set-Job-Attributes operation [RFC3380] and follows the same  
 308 rules for validation. As with the Set-Job-Attributes operation, the Set-Document-Attributes  
 309 operation can add a new attribute, replace the value of an existing attribute, or remove an  
 310 attribute using 'delete-attribute' out-of-band value.

311 If the Client supplies an attribute in a Set-Document-Attributes request with the 'delete-  
 312 attribute' out-of-band value and that attribute is not present on the Document object, the  
 313 Printer ignores the attribute and does not return the attribute in the Unsupported Attributes  
 314 group. The Printer also returns the 'successful-ok' status code if there are no other problems  
 315 with the request.

316 The Printer MUST accept or reject this operation when the Document's "document-state"  
 317 attribute has the values shown in Table 3 but MUST NOT change the state of the Document  
 318 object since the Document is a passive object and the Document state is a subset of the Job  
 319 State. For example, in the case where the operation creates a request for unavailable  
 320 resources, the Job (but not the Document) transitions to a new state.

321 **Table 3 - Allowed Document States for the Set-Document-Attributes operation**

<b>“document-state”</b>	<b>Printer’s response status code and “action”</b>
'pending'	'successful-ok' - if the needed resources are not ready, the Job can change state
'processing'	'successful-ok' or 'client-error-not-possible' depending on implementation, including the attributes being set, whether the document has started marking media, etc.
'completed'	'client-error-not-possible'
'canceled'	'client-error-not-possible'
'aborted'	'client-error-not-possible'

322 This operation MUST NOT change the value of attributes not specified in the operation  
 323 unless the definition of the attribute explicitly specifies such side effects. In general,  
 324 Document attributes that are settable do not define side effects on other attributes that are  
 325 settable, only side effects on READ-ONLY attributes, if any.

326 If the Printer supports the Set-Document-Attributes operation, then it SHOULD support  
 327 setting of all Document Description and Document Template attributes that the

328 implementation supports. Document Status attributes are READ-ONLY and cannot be set  
329 directly using this operation.

330 Note: There is no way for the Client to set all of a Job's Document objects to the same  
331 attribute values in a single operation. Either a) the Client sets the corresponding attribute in  
332 each Document object in the Job with separate Set-Document-Attributes requests, or b) the  
333 Client sets the corresponding attribute at the Job Level using the Set-Job-Attributes  
334 operation. Setting the corresponding attribute at the Job Level (or supplying that attribute  
335 initially in the Job Creation operation) causes each Document object to inherit the Job Level  
336 attribute value, if the Document object doesn't have a corresponding explicit attribute  
337 supplied at the Document Level. In other words, supplying an attribute at the Job Level will  
338 affect all the Job's Document objects that don't have that attribute also explicitly supplied at  
339 the Document Level.

340 Access Rights: Only the Job Owner or an Operator or Administrator of the Printer can  
341 perform this operation. Otherwise, the Printer MUST reject the operation and return 'client-  
342 error-forbidden', 'client-error-not-authenticated', or 'client-error-not-authorized' as  
343 appropriate.

#### 344 **5.1.3.1 Set-Document-Attributes Request**

345 The following groups of attributes are part of the Set-Document-Attributes request:

346 Group 1: Operation Attributes

347 Natural Language and Character Set:

348 The "attributes-charset" and "attributes-natural-language" attributes as  
349 described in [STD92].

350 Target:

351 Either a) the "printer-uri" (uri) and "job-id" (integer(1:MAX)) or b) the "job-uri"  
352 (uri) operation attribute(s) [STD92] which define the target Job object for this  
353 operation, followed by the "document-number" (integer(1:MAX)) operation  
354 which defines the target Document object for this operation. If the Client  
355 omits the "document-number" operation attribute, the Printer MUST reject the  
356 request and return the 'client-error-bad-request' status code.

357 Requesting User Name:

358 The "requesting-user-name" (name(MAX)) attribute SHOULD be supplied by  
359 the Client as described in [STD92].

360 Group 2: Document Attributes

361 The Client supplies one or more Document Description or Document  
362 Template attributes. If supported, the Printer MUST either add the attribute (if  
363 it does not already exist in the Document object), replace all values for the  
364 attribute (if it already exists in the Document object), or remove the attribute  
365 (if the 'delete-attribute' out-of-band value is supplied by the Client).

### 366 5.1.3.2 Set-Document-Attributes Response

367 The Printer returns the following groups of attributes as part of the Set-Document-Attributes  
368 response:

369 Group 1: Operation Attributes

370 Status Message:

371 In addition to the REQUIRED status code returned in every response, the  
372 response OPTIONALLY includes a "status-message" (text(255)) and/or a  
373 "detailed-status-messages" (text(MAX)) Operation attribute as described in  
374 [STD92].

375 Natural Language and Character Set:

376 The "attributes-charset" and "attributes-natural-language" attributes as  
377 described in [STD92].

378 Group 2: Unsupported Attributes

379 See [STD92] for details on returning Unsupported Attributes.

380 If some of the attributes in the operation fail to validate, the Printer MUST  
381 reject the operation, MUST NOT change any Document attributes, and  
382 MUST return the indicated status code below. In this group, the Printer  
383 MUST also return all attributes that fail to validate. The following are the  
384 reasons that an attribute fails to validate and the value returned for the  
385 attribute, along with the indicated status code and order of detection:

- 386 1. The number of attributes supplied by the client exceeds the maximum  
387 number that the Printer supports in a Set-Document-Attributes  
388 request: return the 'client-error-request-entity-too-large' status code  
389 [STD92].
- 390 2. The Printer doesn't support the attribute: return the attribute with the  
391 'unsupported' out-of-band attribute value and the 'client-error-  
392 attributes-or-values-not-supported' status code [STD92].
- 393 3. The attribute is READ-ONLY (in its definition) or is not-settable in this  
394 implementation: return the attribute with the 'not-settable' out-of-band

395 attribute value and the 'client-error-attributes-not-settable' status code  
396 [RFC3380].

397 4. The Printer doesn't support the value: if the attribute in the operation  
398 has a single value, return it. If the attribute in the operation is multi-  
399 valued, return only those values in a 1setOf that are not supported.  
400 Return the 'client-error-attributes-or-values-not-supported' status code  
401 [STD92].

402 5. The values of some of the supplied attributes conflict with one another  
403 and/or other Document attribute values not being set: if the conflicting  
404 attribute in the operation has a single value, return the attribute and  
405 the value. If the attribute in the operation is multi-valued, return only  
406 the attribute and those values in a 1setOf that are conflicting with  
407 other attributes. Return the 'client-error-conflicting-attributes' status  
408 code [STD92].

## 409 5.2 Job Operations

### 410 5.2.1 Get-Documents

411 This REQUIRED Job operation allows a Client to retrieve the list of Document objects  
412 belonging to the target Job object. The Client MAY also supply a list of Document attribute  
413 names and/or attribute group names. A group of Document object attributes will be returned  
414 for each Document object in the Job.

415 This operation is similar to the Get-Document-Attributes operation (see section 5.1.2),  
416 except that this operation returns attributes from all Document objects contained in the Job  
417 object instead of from a single selected Document object in the Job object. As with the Get-  
418 Document-Attributes operation, the Printer MUST only return attributes that were submitted  
419 by a Client or generated by the Printer.

420 This operation is also similar to the Get-Jobs operation [STD92] except that there are no  
421 equivalents to the "which-jobs" and "my-jobs" operation attributes.

422 It is not an error for the Printer to return 0 Documents. If the response returns 0 Documents  
423 because there are no Documents in the Job, then the status code for 0 Documents MUST  
424 be 'successful-ok'.

425 Access Rights: Only the Job Owner or an Operator or Administrator of the Printer can  
426 perform this operation. Otherwise, the Printer MUST reject the operation and return 'client-  
427 error-forbidden', 'client-error-not-authenticated', or 'client-error-not-authorized' as  
428 appropriate.

### 429 5.2.1.1 Get-Documents Request

430 The following groups of attributes are part of the Get-Documents request:

431 Group 1: Operation Attributes

432 Natural Language and Character Set:

433 The "attributes-charset" and "attributes-natural-language" attributes [STD92]

434 Target:

435 Either a) the "printer-uri" (uri) and "job-id" (integer(1:MAX)) or b) the "job-uri"  
436 (uri) operation attribute(s) [STD92] which define the target Job object for this  
437 operation.

438 Requesting User Name:

439 The "requesting-user-name" (name(MAX)) attribute SHOULD be supplied by  
440 the Client as described in [STD92].

441 "limit" (integer(1:MAX)):

442 The client OPTIONALLY supplies and the Printer MUST support this  
443 operation attribute, which determines the maximum number of Documents  
444 that a Client will receive from the Printer. The limit is a "stateless limit" in that  
445 if the value supplied by the Client is 'N', then only the first 'N' Documents are  
446 returned in the Get-Documents Response. There is no mechanism to allow  
447 for the next 'M' Documents after the first 'N' Documents. If the Client does not  
448 supply the "limit" attribute, the Printer responds with all Documents in the  
449 Job.

450 "requested-attributes" (1setOf keyword):

451 The client OPTIONALLY supplies and the Printer MUST support this  
452 attribute, which is a list of Document attribute names and/or attribute group  
453 names that are returned to the Client for each Document object. The allowed  
454 attribute group names are the same as those defined in the Get-Documents-  
455 Attributes operation in section 5.1.2. If the Client does not supply this  
456 attribute, the Printer MUST respond as if the Client had supplied this attribute  
457 with the single value 'document-number'.

### 458 5.2.1.2 Get-Documents Response

459 The following groups of attributes are part of the Get-Documents request:

460 Group 1: Operation Attributes

461 Status Message:

462 In addition to the REQUIRED status code returned in every response, the  
463 response OPTIONALLY includes a "status-message" (text(255)) and/or a  
464 "detailed-status-messages" (text(MAX)) operation attribute as described in  
465 [STD92].

466 Natural Language and Character Set:

467 The "attributes-charset" and "attributes-natural-language" attributes as  
468 described in [STD92].

469 Group 2: Unsupported Attributes

470 See [STD92] for details on returning Unsupported Attributes.

471 The response MAY contain the "requested-attributes" operation attribute with  
472 any supplied values (attribute keywords) that were requested by the Client  
473 but are not supported by the Printer. If the Printer does return unsupported  
474 attributes referenced in the "requested-attributes" operation attribute and that  
475 attribute included group names such as 'all', the unsupported attributes  
476 MUST NOT include attributes described in the standard but not supported by  
477 the implementation.

478 Groups 3 to N: Document Attributes

479 The Printer responds with the Document Description, Document Status, and  
480 Document Template attributes for each returned Document object as  
481 requested by the "requested-attributes" operation attribute supplied by the  
482 Client in the request. The Printer ignores (does not respond with) any  
483 requested attribute or value which is not supported or which is restricted by  
484 the security policy in force, including whether the requesting user is the Job  
485 owner. However, the Printer MUST respond with the 'unknown' out of band  
486 value [STD92] for any supported attribute (including all REQUIRED  
487 attributes) for which the Printer does not know the value, unless it would  
488 violate the security policy.

489 The Printer MUST return the groups in order of increasing "document-  
490 number" value.

491 **6. New Attributes**

492 **6.1 Document Description Attributes**

493 **6.1.1 document-name (name(MAX))**

494 This REQUIRED Document Description attribute specifies the name of the document and is  
 495 copied from the "document-name" operation attribute [STD92] supplied by the Client in the  
 496 Document Creation request.

497 **6.2 Document Status Attributes**

498 Table 4 lists the Document Status attributes defined by this specification. Printers that  
 499 support a given operation or Job Status attribute MUST support the corresponding  
 500 Document Status attribute.

501 **Table 4 - Document Status Attributes**

Document Attribute	Operation/Job Attribute	Reference
attributes-charset (charset)	attributes-charset	[STD92]
attributes-natural-language (naturalLanguage)	attributes-natural-language	[STD92]
current-page-order (type2 keyword)	current-page-order	[PWG5100.3]
date-time-at-completed (dateTime)	date-time-at-completed	[STD92]
date-time-at-creation (dateTime)	date-time-at-creation	[STD92]
date-time-at-processing (dateTime)	date-time-at-processing	[STD92]
detailed-status-messages (1setOf text(MAX))	job-detailed-status-messages	[STD92]
document-access-errors (1setOf text(MAX))	job-document-access-errors	[STD92]
document-charset (charset)	document-charset	Sections 6.2.1 and 6.4.1
document-format (mimeType)	document-format	[STD92]
document-format-detected (mimeType)	<none>	Section 6.2.2
document-job-id (integer(1:MAX))	job-id	[STD92]



Document Attribute	Operation/Job Attribute	Reference
document-job-uri (uri)	job-uri	[STD92]
document-message (text(MAX))	<none>	Section 6.2.3
document-natural-language (naturalLanguage)	document-natural-language	[STD92]
document-number (integer(1:MAX))	<none>	Section 6.2.4
document-printer-uri (uri)	job-printer-uri	[STD92]
document-state (type1 enum)	job-state (note 1)	[STD92]
document-state-message (text(MAX))	job-state-message	[STD92]
document-state-reasons (1setOf type2 keyword)	job-state-reasons	[STD92]
document-uri (uri)	document-uri (note 2)	[STD92]
impressions (integer(0:MAX))	job-impressions	[STD92]
impressions-completed (integer(0:MAX))	job-impressions-completed	[STD92]
k-octets (integer(0:MAX))	job-k-octets	[STD92]
k-octets-processed (integer(0:MAX))	job-k-octets-processed	[STD92]
last-document (boolean)	<none>	Section 6.2.5
media-sheets (integer(0:MAX))	job-media-sheets	[STD92]
media-sheets-completed (integer(0:MAX))	job-media-sheets- completed	[STD92]
more-info (uri)	job-more-uri	[STD92]
output-device-assigned (name(MAX))	output-device-assigned	[STD92]
printer-up-time (integer(1:MAX))	job-printer-up-time	[STD92]
time-at-completed (integer(MIN:MAX))	time-at-completed	[STD92]
time-at-creation (integer(MIN:MAX))	time-at-creation	[STD92]
time-at-processing (integer(MIN:MAX))	time-at-processing	[STD92]

502 Note 1: The "document-state" attribute supports all of the "job-state" values *except*  
503 '4' (pending-held).

504 Note 2: The "document-uri" attribute identifies the source location of the Document  
505 data and is not an identifier for the Document object. The simple identifier of the  
506 Document is the "document-number" Document Status attribute.

**507 6.2.1 document-charset (charset)**

508 This RECOMMENDED Document Status attribute specifies the charset used in the  
509 Document data. The Printer sets this attribute from the corresponding operation attribute  
510 supplied by the Client in the Document Creation request. Printers that support the  
511 "document-charset" operation attribute MUST support this attribute.

**512 6.2.2 document-format-detected (mimeMediaType)**

513 This Document Status attribute is generated by the Printer to indicate the format of the  
514 Document object content as detected by the Printer.

**515 6.2.3 document-message (text(MAX))**

516 This Document Status attribute contains a message from either a) the User to the Operator  
517 about the Document or b) from the Operator, Administrator, or "intelligent" process to  
518 indicate to the End User the reasons for modification or other management action taken on  
519 the Document. The Printer populates this attribute from the "document-message" operation  
520 attribute value supplied by the Client in any of the Document Creation requests or in a  
521 Cancel-Document request.

**522 6.2.4 document-number (integer(1:MAX))**

523 This REQUIRED Document Status attribute is the ordinal number of the Document within  
524 the Job, and determines its order of being printed in a multi-Document Job. The Printer  
525 MUST generate the values monotonically increasing from 1 for each Job.

**526 6.2.5 last-document (boolean)**

527 This REQUIRED Document Status attribute indicates whether this Document is the last  
528 Document in the Job [STD92]. The Printer sets this attribute from the corresponding  
529 operation attribute supplied by the Client in the Document Creation request, when the Client  
530 sends a Close-Job request [PWG5100.11], or when the "multiple-operation-time-out" time  
531 interval has passed.

**532 6.3 Document Template Attributes**

533 This specification defines Document Template attributes for every Job Template attribute  
534 that does not apply to the whole Job. Table 5 lists the new attributes.

535 **Table 5 - Document Template Attributes**

Attribute	Reference
copies (integer(1:MAX))	[STD92]
cover-back (collection)	[PWG5100.3]
cover-front (collection)	[PWG5100.3]
finishings (1setOf type2 enum)	[STD92]
finishings-col (1setOf collection)	[PWG5100.1]
force-front-side (1setOf integer(1:MAX))	[PWG5100.3]
imposition-template (type2 keyword   name(MAX))	[PWG5100.3]
media (type2 keyword   name(MAX))	[STD92]
media-col (collection)	[PWG5100.3]
media-input-tray-check (type2 keyword   name(MAX))	[PWG5100.3]
number-up (integer(1:MAX))	[STD92]
orientation-requested (type2 enum)	[STD92]
output-bin (type2 keyword   name(MAX))	[PWG5100.2]
page-delivery (type2 keyword)	[PWG5100.3]
page-order-received (type2 keyword)	[PWG5100.3]
page-ranges (1setOf rangeOfInteger(1:MAX))	[STD92]
presentation-direction-number-up (type2 keyword)	[PWG5100.3]
print-quality (type2 enum)	[STD92]
printer-resolution (resolution)	[STD92]
sides (type2 keyword)	[STD92]
x-image-position (type2 keyword)	[PWG5100.3]
x-image-shift (integer(MIN:MAX))	[PWG5100.3]
x-side1-image-shift (integer(MIN:MAX))	[PWG5100.3]
x-side2-image-shift (integer(MIN:MAX))	[PWG5100.3]
y-image-position (type2 keyword)	[PWG5100.3]
y-image-shift (integer(MIN:MAX))	[PWG5100.3]
y-side1-image-shift (integer(MIN:MAX))	[PWG5100.3]
y-side2-image-shift (integer(MIN:MAX))	[PWG5100.3]

## 536 6.4 Operation Attributes

### 537 6.4.1 document-charset (charset)

538 This RECOMMENDED operation attribute specifies the character set used by the Document  
539 data.

### 540 6.4.2 document-number (integer(1:MAX))

541 This REQUIRED operation attribute specifies the ordinal number of the Document within the  
542 Job.

## 543 **6.5 Printer Description Attributes**

### 544 **6.5.1 document-creation-attributes-supported (1setOf keyword)**

545 This REQUIRED attribute lists the keyword names of the Document Template and operation  
546 attributes that the Printer will accept in the Send-Document and Send-URI Document  
547 Creation operations. Implementations that support the Send-URI operation MUST include  
548 the ‘document-uri’ keyword in “document-creation-attributes-supported”. Implementations  
549 that do not support Send-URI MUST NOT include the ‘document-uri’ keyword in “document-  
550 creation-attributes-supported”.

551 Note: The “document-uri” attribute is specific to the Send-URI operation. Inclusion of the  
552 ‘document-uri’ keyword in “document-creation-attributes-supported” does not imply that the  
553 “document-uri” attribute is valid for the Send-Document operation.

## 554 **7. New Attribute Group Tags**

### 555 **7.1 document-attributes-tag**

556 The document-attributes-tag (0x09) attribute group tag is used to delimit Document object  
557 attributes in IPP messages.

558

559 **8. Additional Semantics for Existing Operations**

560 **8.1 Cancel-Job: "document-state" and "document-state-reasons"**

561 This REQUIRED operation sets the “document-state” Document Status attribute to  
 562 ‘canceled’ and the “document-state-reasons” Document Status attribute with ‘canceled-by-  
 563 user’ or ‘canceled-by-operator’ for *all* Document objects in the identified Job that have not  
 564 yet reached a terminating state (‘completed’, ‘canceled’, or ‘aborted’).

565 **8.2 Hold-Job and Release-Job: "document-state-reasons"**

566 These OPTIONAL operations affect the state of the target Job. The values of the  
 567 Documents’ “document-state-reasons” Document Status attributes MUST NOT be affected  
 568 by these operations.

569 **8.3 Print-Job, Print-URI: Document Object and Attributes**

570 This specification extends the REQUIRED Print-Job and OPTIONAL Print-URI operations  
 571 [STD92] to explicitly create a Document object and copy the request operation attributes  
 572 listed in Table 6 to the corresponding Document attributes. Printers MUST NOT copy Job  
 573 Template attributes to the created Document object.

574 Printers can also return the attributes listed in Table 7 in the Document attributes group after  
 575 the Job attributes group.

576 **Table 6 - Operation Attributes Copied to Document Objects**

Operation Attribute	Document Attribute	Reference
attributes-charset	attributes-charset	[STD92]
attributes-natural-language	attributes-natural-language	[STD92]
document-charset	document-charset	Sections 6.2.1 and 6.4.1
document-format	document-format	[STD92]
	document-format-detected	Section 6.2.2
document-message	document-message	Section 6.2.3
document-name	document-name	[STD92]
document-natural-language	document-natural-language	[STD92]
document-uri	document-uri	[STD92]
job-impressions	impressions	[STD92], Section 6.2
job-k-octets	k-octets	[STD92], Section 6.2
job-media-sheets	media-sheets	[STD92], Section 6.2

577 **Table 7 - Returned Document Status Attributes**

Document Status Attribute	Print-xxx Conformance	Send-xxx Conformance	Reference
document-number	OPTIONAL	REQUIRED	Section 6.2.4
document-state	OPTIONAL	REQUIRED	Section 6.2
document-state-message	OPTIONAL	OPTIONAL	Section 6.2
document-state-reasons	OPTIONAL	REQUIRED	Section 6.2

578 **8.3.1 Print-Job/Print-URI Response**

579 The following sets of attributes are part of the Print-Job and Print-URI responses:

580 Group 1: Operation Attributes

581 As specified in [STD92].

582 Group 2: Unsupported Attributes

583 As specified in [STD92].

584 Group 3: Job Object Attributes

585 As specified in [STD92].

586 Group 4: Document Object Attributes (new)

587 "document-number" (integer(1:MAX)):

588 The Printer MAY return the number of this Document object that was  
589 assigned by the Printer starting with 1 for each Job.

590 "document-state" (type1 enum):

591 The Printer MAY return the state of this Document object.

592 "document-state-reasons" (1 setOf type2 keyword):

593 The Printer MAY return the associated state reasons for this Document.

594 "document-state-message" (text(MAX)):

595 The Printer MAY return the localized description of the “document-state” and  
596 “document-state-reasons” values for this Document.

## 597 **8.4 Send-Document: Document Object and Attributes**

598 This specification extends the REQUIRED Send-Document operation [STD92] to explicitly  
599 create a Document object and copy the operation attributes listed in Table 6 to the  
600 corresponding Document attributes.

601 The Send-Document request is also extended to support an additional Document Template  
602 attribute group after the operation attribute group. Document Template attributes are copied  
603 to the Document object after validation as described in section 4.3. Printers MUST NOT  
604 copy Document Template attributes to the Job object.

605 Finally, Printers also return the attributes listed in Table 7 in the Document attributes group  
606 after the Job attributes group.

### 607 **8.4.1 Send-Document Request**

608 The following attribute sets are part of the Send-Document request:

609       Group 1: Operation Attributes

610               As specified in [STD92].

611       Group 2: Document Template Attributes (new)

612               The Client OPTIONALLY supplies and the Printer MUST support a set of  
613               Document Template attributes. If the Client is not supplying any Document  
614               Template attributes in the request, the Client SHOULD omit Group 2 rather  
615               than sending an empty group. However, a Printer MUST be able to accept  
616               an empty group.

617       Group 3: Document Data

618               As specified in [STD92].

### 619 **8.4.2 Send-Document Response**

620 The following sets of attributes are part of the Send-Document response:

621       Group 1: Operation Attributes

622               As specified in [STD92].

623       Group 2: Unsupported Attributes

624               As specified in [STD92].

625 Group 3: Job Object Attributes

626 As specified in [STD92].

627 Group 4: Document Object Attributes (new)

628 "document-number" (integer(1:MAX)):

629 The Printer MUST return the number of this Document object that was  
630 assigned by the Printer starting with 1 for each Job.

631 "document-state" (type1 enum):

632 The Printer MUST return the state of this Document object.

633 "document-state-reasons" (1 setOf type2 keyword):

634 The Printer MUST return the associated state reasons for this Document.

635 "document-state-message" (text(MAX)):

636 The Printer MAY return the localized description of the "document-state" and  
637 "document-state-reasons" values for this Document.

## 638 8.5 Send-URI: Document Object and Attributes

639 This specification extends the OPTIONAL Send-URI operation [STD92] to explicitly create  
640 a Document object and copy the operation attributes listed in Table 6 to the corresponding  
641 Document attributes.

642 The Send-URI request is also extended to support an additional Document Template  
643 attribute group after the operation attribute group. Document Template attributes are copied  
644 to the Document object after validation as described in section 4.3. Printers MUST NOT  
645 copy Document Template attributes to the Job object.

646 Finally, Printers also return the attributes listed in Table 7 in the Document attributes group  
647 after the Job attributes group.

### 648 8.5.1 Send-URI Request

649 The following attribute sets are part of the Send-URI request:

650 Group 1: Operation Attributes

651 As specified in [STD92].



652 Group 2: Document Template Attributes (new)

653 The Client OPTIONALLY supplies and the Printer MUST support a set of  
654 Document Template attributes. If the Client is not supplying any Document  
655 Template attributes in the request, the Client SHOULD omit Group 2 rather  
656 than sending an empty group. However, a Printer MUST be able to accept  
657 an empty group.

## 658 8.5.2 Send-URI Response

659 The following sets of attributes are part of the Send-URI response:

660 Group 1: Operation Attributes

661 As specified in [STD92].

662 Group 2: Unsupported Attributes

663 As specified in [STD92].

664 Group 3: Job Object Attributes

665 As specified in [STD92].

666 Group 4: Document Object Attributes (new)

667 "document-number" (integer(1:MAX)):

668 The Printer MUST return the number of this Document object that was  
669 assigned by the Printer starting with 1 for each Job.

670 "document-state" (type1 enum):

671 The Printer MUST return the state of this Document object.

672 "document-state-reasons" (1setOf type2 keyword):

673 The Printer MUST return the associated state reasons for this Document.

674 "document-state-message" (text(MAX)):

675 The Printer MAY return the localized description of the "document-state" and  
676 "document-state-reasons" values for this Document.

677 **9. Additional Values for Existing Attributes**

678 **9.1 notify-events (1setOf type2 keyword)**

679 This specification defines the following new notification event keywords:

680 'document-completed': The Document has reached a terminating state ('aborted',  
681 'canceled', or 'completed') - this is a sub-event of 'document-state-changed'

682 'document-config-changed': The Document Template or Description attributes have  
683 been changed

684 'document-created': The Document has been created

685 'document-state-changed': The Document state has changed

686 'document-stopped': The Document has entered the 'processing-stopped' state -  
687 this is a sub-event of 'document-state-changed'

688 **9.2 operations-supported (1setOf type2 enum)**

689 Table 8 lists the “operation-id” values for the new operations defined in this specification.

690 **Table 8 – Operation-id Values**

Value	Operation Name	Reference
0x0033	Cancel-Documents	Section 5.1.1
0x0034	Get-Document-Attributes	Section 5.1.2
0x0035	Get-Documents	Section 5.2.1
0x0037	Set-Document-Attributes	Section 5.1.3

691

### 692 **9.3 requested-attributes (1setOf type2 keyword)**

693 This specification defines the following additional values for the "requested-attributes"  
694 operation attribute [STD92]:

695 'document-description': All Document Description and Document Status attributes.

696 'document-template': All Document Template and Printer "xxx-supported" attributes.

## 697 **10. Conformance Requirements**

### 698 **10.1 Printer Conformance Requirements**

699 In order for a Printer to claim conformance to this specification, a Printer MUST support:

- 700 1. The required operations defined in section 5;
- 701 2. The required attributes and values defined in section 6;
- 702 3. The new attribute group tag defined in section 7;
- 703 4. The additional semantics defined in section 8;
- 704 5. The additional values defined in section 9;
- 705 6. The internationalization considerations defined in section 11; and
- 706 7. The security considerations defined in section 12.

### 707 **10.2 Client Conformance Requirements**

708 In order for a Client to claim conformance to this specification, a Client MUST support:

- 709 1. The required operations defined in section 5;
  - 710 2. The required attributes and values defined in section 6;
  - 711 3. The new attribute group tag defined in section 7;
  - 712 4. The additional values defined in section 9;
  - 713 5. The internationalization considerations defined in section 11; and
  - 714 6. The security considerations defined in section 12.
- 715

## 716 11. Internationalization Considerations

717 For interoperability and basic support for multiple languages, conforming implementations  
718 MUST support:

- 719 1. The Universal Character Set (UCS) Transformation Format -- 8 bit (UTF-8)  
720 [STD63] encoding of Unicode [UNICODE] [ISO10646]; and
- 721 2. The Unicode Format for Network Interchange [RFC5198] which requires  
722 transmission of well-formed UTF-8 strings and recommends transmission of  
723 normalized UTF-8 strings in Normalization Form C (NFC) [UAX15].

724 Unicode NFC is defined as the result of performing Canonical Decomposition (into base  
725 characters and combining marks) followed by Canonical Composition (into canonical  
726 composed characters wherever Unicode has assigned them).

727 WARNING – Performing normalization on UTF-8 strings received from Clients and  
728 subsequently storing the results (e.g., in Job objects) could cause false negatives in Client  
729 searches and failed access (e.g., to Printers with percent-encoded UTF-8 URIs now  
730 'hidden').

731 Implementations of this specification SHOULD conform to the following standards on  
732 processing of human-readable Unicode text strings, see:

733 Unicode Bidirectional Algorithm [UAX9] – left-to-right, right-to-left, and vertical

734 Unicode Line Breaking Algorithm [UAX14] – character classes and wrapping

735 Unicode Normalization Forms [UAX15] – especially NFC for [RFC5198]

736 Unicode Text Segmentation [UAX29] – grapheme clusters, words, sentences

737 Unicode Identifier and Pattern Syntax [UAX31] – identifier use and normalization

738 Unicode Collation Algorithm [UTS10] – sorting

739 Unicode Locale Data Markup Language [UTS35] – locale databases

740 Implementations of this specification are advised to also review the following informational  
741 documents on processing of human-readable Unicode text strings:

742 Unicode Character Encoding Model [UTR17] – multi-layer character model

743 Unicode Character Property Model [UTR23] – character properties

744 Unicode Conformance Model [UTR33] – Unicode conformance basis

745 **12. Security and Privacy Considerations**

746 The IPP extensions defined in this specification require the same security and privacy  
747 considerations as defined in the Internet Printing Protocol/1.1 [STD92].

748 Implementations of this specification SHOULD conform to the following standard on  
749 processing of human-readable Unicode text strings, see:

750       Unicode Security Mechanisms [UTS39] – detecting and avoiding security attacks

751 Implementations of this specification are advised to also review the following informational  
752 document on processing of human-readable Unicode text strings:

753       Unicode Security FAQ [UNISECFAQ] – common Unicode security issues

754 **13. IANA Considerations**

755 **13.1 Attribute Registrations**

756 The attributes defined in this specification will be published by IANA according to the  
757 procedures in the Internet Printing Protocol/1.1 [STD92] in the following location:

758       <https://www.iana.org/assignments/ipp-registrations>

759 The registry entries will contain the following information:

760 Document Description attributes:	Reference
761 -----	-----
762 document-name (name(MAX))	[PWG5100.5]
763	
764 Document Status attributes:	Reference
765 -----	-----
766 attributes-charset (charset)	[PWG5100.5]
767 attributes-natural-language (naturalLanguage)	[PWG5100.5]
768 date-time-at-completed (dateTime)	[PWG5100.5]
769 date-time-at-created (dateTime)	[PWG5100.5]
770 date-time-at-processing (dateTime)	[PWG5100.5]
771 detailed-status-messages (1setOf text(MAX))	[PWG5100.5]
772 document-access-errors (1setOf text(MAX))	[PWG5100.5]
773 document-charset (charset)	[PWG5100.5]
774 document-digital-signature(obsolete) (type2 keyword)	[PWG5100.5]
775 document-format (mimeMediaType)	[PWG5100.5]
776 document-format-detected (mimeMediaType)	[PWG5100.5]
777 document-job-id (integer(1:MAX))	[PWG5100.5]
778 document-job-uri (uri)	[PWG5100.5]
779 document-message (text(MAX))	[PWG5100.5]
780 document-natural-language (naturalLanguage)	[PWG5100.5]

781	document-number (integer(1:MAX))	[PWG5100.5]
782	document-printer-uri (uri)	[PWG5100.5]
783	document-state (type1 enum)	[PWG5100.5]
784	document-state-message (text(MAX))	[PWG5100.5]
785	document-state-reasons (1setOf type2 keyword)	[PWG5100.5]
786	document-uri (uri)	[PWG5100.5]
787	impressions (integer(0:MAX))	[PWG5100.5]
788	impressions-completed (integer(0:MAX))	[PWG5100.5]
789	k-octets (integer(0:MAX))	[PWG5100.5]
790	k-octets-processed (integer(0:MAX))	[PWG5100.5]
791	last-document (boolean)	[PWG5100.5]
792	media-sheets (integer(0:MAX))	[PWG5100.5]
793	media-sheets-completed (integer(0:MAX))	[PWG5100.5]
794	more-info (uri)	[PWG5100.5]
795	output-device-assigned (name(MAX))	[PWG5100.5]
796	printer-up-time (integer(1:MAX))	[PWG5100.5]
797	time-at-completed (integer(MIN:MAX))	[PWG5100.5]
798	time-at-creation (integer(MIN:MAX))	[PWG5100.5]
799	time-at-processing (integer(MIN:MAX))	[PWG5100.5]
800		
801	Document Template attributes:	Reference
802	-----	-----
803	copies (integer(1:MAX))	[PWG5100.5]
804	cover-back(deprecated) (collection)	[PWG5100.5]
805	<Member attributes are the same as the "cover-back" Job Template	
806	attribute>	[PWG5100.5]
807	cover-front(deprecated) (collection)	[PWG5100.5]
808	<Member attributes are the same as the "cover-front" Job Template	
809	attribute>	[PWG5100.5]
810	finishings (1setOf type2 enum)	[PWG5100.5]
811	finishings-col (1setOf collection)	[PWG5100.5]
812	<Member attributes are the same as the "finishings-col" Job Template	
813	attribute>	[PWG5100.5]
814	force-front-side (1setOf integer(1:MAX))	[PWG5100.5]
815	imposition-template (type2 keyword   name(MAX))	[PWG5100.5]
816	media (type2 keyword   name(MAX))	[PWG5100.5]
817	media-col (collection)	[PWG5100.5]
818	<Member attributes are the same as the "media-col" Job Template	
819	attribute>	[PWG5100.5]
820	media-input-tray-check(deprecated) (type2 keyword   name(MAX))	[PWG5100.5]
821	number-up (integer(1:MAX))	[PWG5100.5]
822	orientation-requested (type2 enum)	[PWG5100.5]
823	output-bin (type2 keyword   name(MAX))	[PWG5100.5]
824	page-delivery (type2 keyword)	[PWG5100.5]
825	page-ranges (1setOf rangeOfInteger(1:MAX))	[PWG5100.5]
826	presentation-direction-number-up(deprecated) (type2 keyword)	[PWG5100.5]
827	print-quality (type2 enum)	[PWG5100.5]
828	printer-resolution (resolution)	[PWG5100.5]
829	sides (type2 keyword)	[PWG5100.5]
830	x-image-position (type2 keyword)	[PWG5100.5]
831	x-image-shift (integer(MIN:MAX))	[PWG5100.5]
832	x-side1-image-shift (integer(MIN:MAX))	[PWG5100.5]
833	x-side2-image-shift (integer(MIN:MAX))	[PWG5100.5]
834	y-image-position (type2 keyword)	[PWG5100.5]
835	y-image-shift (integer(MIN:MAX))	[PWG5100.5]
836	y-side1-image-shift (integer(MIN:MAX))	[PWG5100.5]

837	y-side2-image-shift (integer(MIN:MAX))	[PWG5100.5]
838		
839	Operation attributes:	Reference
840	-----	-----
841	document-charset (charset)	[PWG5100.5]
842	document-number (integer(1:MAX))	[PWG5100.5]
843		
844	Printer Description attributes:	Reference
845	-----	-----
846	document-creation-attributes-supported (1setOf keyword)	[PWG5100.5]

847 **13.2 keyword Registrations**

848 The keyword values defined in this specification will be published by IANA according to the  
 849 procedures in the Internet Printing Protocol/1.1 [STD92] in the following location:

850 <https://www.iana.org/assignments/ipp-registrations>

851 The registry entries will contain the following information:

852	Attributes (attribute syntax)	
853	Keyword Attribute Value	Reference
854	-----	-----
855	notify-events (1setOf type2 keyword)	[RFC3995]
856	document-completed	[PWG5100.5]
857	document-config-changed	[PWG5100.5]
858	document-created	[PWG5100.5]
859	document-state-changed	[PWG5100.5]
860	document-stopped	[PWG5100.5]
861		
862	requested-attributes (1setOf type2 keyword)	[STD92]
863	document-description	[PWG5100.5]
864	document-template	[PWG5100.5]

865 **13.3 enum Registrations**

866 The enum values defined in this specification will be published by IANA according to the  
 867 procedures in the Internet Printing Protocol/1.1 [STD92] in the following location:

868 <https://www.iana.org/assignments/ipp-registrations>

869 The registry entries will contain the following information:

870	Attributes (attribute syntax)	
871	Enum Value Enum Symbolic Name	Reference
872	-----	-----
873	document-state (type1 enum)	[PWG5100.5]
874	3 pending	[PWG5100.5]
875	5 procesing	[PWG5100.5]
876	6 processing-stopped	[PWG5100.5]

877	7	canceled	[PWG5100.5]
878	8	aborted	[PWG5100.5]
879	9	completed	[PWG5100.5]
880			
881		operations-supported (1setOf type2 enum)	[STD92]
882	0x0033	Cancel-Document	[PWG5100.5]
883	0x0034	Get-Document-Attributes	{PWG5100.5}
884	0x0035	Get-Documents	[PWG5100.5]
885	0x0037	Set-Document-Attributes	[PWG5100.5]
886			

887 **13.4 Operation Registrations**

888 The operations defined in this specification will be published by IANA according to the  
 889 procedures in the Internet Printing Protocol/1.1 [STD92] in the following location:

890 <https://www.iana.org/assignments/ipp-registrations>

891 The registry entries will contain the following information:

892	Operation Name	Reference
893	-----	-----
894	Cancel-Document	[PWG5100.5]
895	Cancel-Job (extension)	[PWG5100.5]
896	Get-Document-Attributes	[PWG5100.5]
897	Get-Documents	[PWG5100.5]
898	Hold-Job (extension)	[PWG5100.5]
899	Print-Job (extension)	[PWG5100.5]
900	Print-URI (extension)	[PWG5100.5]
901	Release-Job (extension)	[PWG5100.5]
902	Send-Document (extension)	[PWG5100.5]
903	Send-URI (extension)	[PWG5100.5]
904	Set-Document-Attributes	[PWG5100.5]

905 **13.5 Attribute Group Registrations**

906 The attribute groups defined in this specification will be published by IANA according to the  
 907 procedures in the Internet Printing Protocol/1.1 [STD92] in the following location:

908 <https://www.iana.org/assignments/ipp-registrations>

909 The registry entries will contain the following information:

910	Value	Attribute Group Name	Reference
911	-----	-----	-----
912	0x09	document-attributes-tag	[PWG5100.5]



## 913 **14. Overview of Changes**

### 914 **14.1 IPP Document Object v1.2**

915 The following changes were made to the previous version of this specification [PWG5100.5-  
916 2019]:

- 917 • Added document notification events from the IPP Shared Infrastructure Extensions  
918 v1.0 (INFRA) [PWG5100.18-2015]
- 919 • DEPRECATED the "cover-back", "cover-front", "media-input-tray-check", and  
920 "presentation-number-up" Document Template attributes to match the changes made  
921 in the IPP Production Printing Extensions v2.0 (PPX) [PWG5100.3]
- 922 • Removed OBSOLETE attributes, values, and operations.

### 923 **14.2 IPP Document Object v1.1**

924 The following changes were made to the previous version of this specification [PWG5100.5-  
925 2003]:

- 926 • Printers no longer need to support multiple Document Jobs, as the Document object  
927 and associated operations are useful even for single Document Jobs;
- 928 • Rationale and model sections have been added;
- 929 • References now point to the current versions of dependent documents and  
930 specifications at the time of publication;
- 931 • The "document-charset" operation attribute has been added to this specification;
- 932 • The Delete-Document operation has been made OBSOLETE because it destroys  
933 accounting information;
- 934 • Additional semantics for the DEPRECATED Reprocess-Job and Restart-Job  
935 operations have been removed because those operations SHOULD NOT be  
936 implemented or used;
- 937 • The "ipp-attribute-fidelity" and "job-mandatory-attributes" operation attributes are no  
938 longer promoted to persistent Job and Document attributes because they are only  
939 utilized during Job Creation;

- 940 • The "compression" Document Status attribute has been made OBSOLETE because  
941 it serves no purpose;
- 942 • The "document-digital-signature" Document Status attribute has been made  
943 OBSOLETE because it serves no purpose;
- 944 • The "document-format-details" and "document-format-details-detected" Document  
945 Status attributes have been moved to the IPP Job Extensions v2.0 specification;
- 946 • The "document-format-version" and "document-format-version-detected" Document  
947 Status attributes have been made OBSOLETE because they have serious  
948 interoperability issues; and
- 949 • The "impressions-completed-current-copy" and "sheet-completed-copy-number"  
950 Document Status attributes have been made OBSOLETE because the parent  
951 specification (RFC 3381) is OBSOLETE.

## 952 15. References

### 953 15.1 Normative References

- 954 [BCP14] S. Bradner, "Key words for use in RFCs to Indicate Requirement  
955 Levels", RFC 2119/BCP 14, March 1997,  
956 <https://tools.ietf.org/html/bcp14>
- 957 [ISO10646] "Information technology -- Universal Coded Character Set (UCS)",  
958 ISO/IEC 10646:2011
- 959 [PWG5100.1] S. Kennedy, M. Sweet, "IPP Finishings v3.0 (FIN)", PWG 5100.1-  
960 2022, May 2022, [https://ftp.pwg.org/pub/pwg/candidates/cs-  
961 ippfinishings30-20220527-5100.1.pdf](https://ftp.pwg.org/pub/pwg/candidates/cs-ippfinishings30-20220527-5100.1.pdf)
- 962 [PWG5100.2] T. Hastings, R. Bergman, "Internet Printing Protocol (IPP): 'output-bin'  
963 attribute extension", PWG 5100.2-2001, February 2001,  
964 [https://ftp.pwg.org/pub/pwg/candidates/cs-ippoutputbin10-20010207-  
965 5100.2.pdf](https://ftp.pwg.org/pub/pwg/candidates/cs-ippoutputbin10-20010207-5100.2.pdf)
- 966 [PWG5100.3] M. Sweet, "IPP Production Printing Extensions v2.0", PWG 5100.3-  
967 2023, January 2023, [https://ftp.pwg.org/pub/pwg/candidates/cs-  
968 ippppx20-20230131-5100.3.pdf](https://ftp.pwg.org/pub/pwg/candidates/cs-ippppx20-20230131-5100.3.pdf)
- 969 [PWG5100.11] S. Kennedy, "IPP Enterprise Printing Extensions v2.0 (EPX)", PWG  
970 5100.11-2024, Month 2024, [https://ftp.pwg.org/pub/pwg/ipp/wd/wd-  
971 ippepx20-20240102.pdf](https://ftp.pwg.org/pub/pwg/ipp/wd/wd-ippepx20-20240102.pdf)

- 972 [RFC3380] T. Hastings, R. Herriot, C. Kugler, H. Lewis, "Internet Printing Protocol  
973 (IPP): Job and Printer Set Operations", RFC 3380, September 2002,  
974 <https://datatracker.ietf.org/doc/html/rfc3380>
- 975 [RFC3998] C. Kugler, H. Lewis, T. Hastings, "Internet Printing Protocol (IPP): Job  
976 and Printer Administrative Operations", RFC 3998, March 2005,  
977 <https://datatracker.ietf.org/doc/html/rfc3998>
- 978 [RFC5198] J. Klensin, M. Padlipsky, "Unicode Format for Network Interchange",  
979 RFC 5198, March 2008, <https://datatracker.ietf.org/doc/html/rfc5198>
- 980 [STD63] F. Yergeau, "UTF-8, a transformation format of ISO 10646", RFC  
981 3629/STD 63, November 2003, <https://tools.ietf.org/html/std63>
- 982 [STD92] M. Sweet, I. McDonald, "Internet Printing Protocol/1.1", STD 92, June  
983 2018, <https://tools.ietf.org/html/std92>
- 984 [STD99] R. Fielding, J. Reschke, "Hypertext Transfer Protocol (HTTP/1.1):  
985 Message Syntax and Routing", RFC 9112/STD 99, June 2014,  
986 <https://datatracker.ietf.org/doc/html/rfc9112>
- 987 [UAX9] Unicode Consortium, "Unicode Bidirectional Algorithm", UAX#9,  
988 August 2022, <https://www.unicode.org/reports/tr9>
- 989 [UAX14] Unicode Consortium, "Unicode Line Breaking Algorithm", UAX#14,  
990 August 2022, <https://www.unicode.org/reports/tr14>
- 991 [UAX15] M. Davis, M. Duerst, "Unicode Normalization Forms", Unicode  
992 Standard Annex 15, August 2022,  
993 <https://www.unicode.org/reports/tr15>
- 994 [UAX29] Unicode Consortium, "Unicode Text Segmentation", UAX#29, August  
995 2022, <https://www.unicode.org/reports/tr29>
- 996 [UAX31] Unicode Consortium, "Unicode Identifier and Pattern Syntax",  
997 UAX#31, August 2022, <https://www.unicode.org/reports/tr31>
- 998 [UNICODE] Unicode Consortium, "Unicode Standard", Version 15.1.0, September  
999 2023, <https://www.unicode.org/versions/Unicode15.1.0/>
- 1000 [UTS10] Unicode Consortium, "Unicode Collation Algorithm", UTS#10, August  
1001 2022, <https://www.unicode.org/reports/tr10>
- 1002 [UTS35] Unicode Consortium, "Unicode Locale Data Markup Language",  
1003 UTS#35, October 2022, <https://www.unicode.org/reports/tr35>
- 1004 [UTS39] Unicode Consortium, "Unicode Security Mechanisms", UTS#39,  
1005 August 2022, <https://www.unicode.org/reports/tr39>

## 1006 15.2 Informative References

- 1007 [PWG5100.5-2003] D. Carney, T. Hastings, P. Zehler, "Standard for The Internet Printing  
1008 Protocol (IPP): Document Object", PWG 5100.5-2003 (obsoleted by  
1009 this specification), October 2003,  
1010 [https://ftp.pwg.org/pub/pwg/candidates/cs-ippdocobject10-20031031-  
1011 5100.5.pdf](https://ftp.pwg.org/pub/pwg/candidates/cs-ippdocobject10-20031031-5100.5.pdf)
- 1012 [PWG5100.5-2019] M. Sweet, "IPP Document Object v1.1 (DOBJECT)", PWG 5100.5-  
1013 2019, May 2019, [https://ftp.pwg.org/pub/pwg/candidates/cs-  
1014 ippdocobject11-20190521-5100.5.pdf](https://ftp.pwg.org/pub/pwg/candidates/cs-ippdocobject11-20190521-5100.5.pdf)
- 1015 [PWG5100.7-2003] T. Hastings, P. Zehler, "Standard for The Internet Printing Protocol  
1016 (IPP): Job Extensions", PWG 5100.7-2003, October 2003,  
1017 [https://ftp.pwg.org/pub/pwg/candidates/cs-ippjobext10-20031031-  
1018 5100.7.pdf](https://ftp.pwg.org/pub/pwg/candidates/cs-ippjobext10-20031031-5100.7.pdf)
- 1019 [PWG5100.18-2015]  
1020 M. Sweet, I. McDonald, "IPP Shared Infrastructure Extensions  
1021 (INFRA)", PWG 5100.18-2015, June 2015,  
1022 [https://ftp.pwg.org/pub/pwg/candidates/cs-ippinfra10-20150619-  
1023 5100.18.pdf](https://ftp.pwg.org/pub/pwg/candidates/cs-ippinfra10-20150619-5100.18.pdf)
- 1024 [UTR17] Unicode Consortium "Unicode Character Encoding Model", UTR#17,  
1025 November 2008, <https://www.unicode.org/reports/tr17>
- 1026 [UTR23] Unicode Consortium "Unicode Character Property Model", UTR#23,  
1027 September 2021, <https://www.unicode.org/reports/tr23>
- 1028 [UTR33] Unicode Consortium "Unicode Conformance Model", UTR#33,  
1029 November 2008, <https://www.unicode.org/reports/tr33>
- 1030 [UNISECFAQ] Unicode Consortium "Unicode Security FAQ", November 2013,  
1031 <https://www.unicode.org/faq/security.html>  
1032

1033 **16. Author**

1034 Primary author:

1035 Michael Sweet

1036 Lakeside Robotics Corporation

1037 The author would like to especially thank the following individuals who also contributed  
1038 significantly to the development of this specification:

1039 Dennis Carney (author of v1.0)

1040 Tom Hastings (author of v1.0)

1041 Ira McDonald (High North, Inc.)

1042 Peter Zehler (author of v1.0)

1043