

1
2
3
4
5
6
7
8
9
10
11
12
13
14
15

16
17
18
19
20
21
22

The Printer Working Group Internet Printing Protocol (IPP): Document object

15 ISSUES are highlighted like this.



Draft 0.3 for 5100.5-2002

September 9, 2002

23

24

25

26

27

28

29

30

31

32

33

34

The Printer Working Group Standard for Internet Printing Protocol (IPP): Document Object

35

36

37

38

39

40

41

42

43

44

45

46

47

Abstract: This IPP specification extends the IPP Model and Semantics [RFC2911] ~~to include~~ by defining a Document object. The [RFC2911] Job object is extended to contain one or more Document objects which are passive objects operated on by the Job. The Document object is created by the [RFC2911] Send-Document and Send-URI operations. The extension is to also add a ~~(new)~~ Document Attributes group (and tag) to these requests which contains any Document Template attributes to be applied to this Document object being created, overriding any corresponding Job Template attribute supplied at the job level (including the “document-overrides” operation attributes at the Job or Document level). Also there are seven new operations defined for Documents once they have been created: Cancel-Current-Docum~~ent~~, Cancel-Docum~~ent~~, Get-Docum~~ent~~-Attributes, Get-Docum~~ent~~s, Delete-Docum~~ent~~, Set-Docum~~ent~~-Attributes, and Validate-Docum~~ent~~. This specification also lists all of the attributes defined in other IPP specifications to show their relationship to corresponding attributes defined in this IPP specification for use with the Document object. The full semantics of the “document-state” and “document-state-reasons” Document Description attributes is given along side of the corresponding [RFC2911] “job-state” and “job-state-reasons” Job Description attributes.

48

49

50

The purpose for specifying the Document object_r is so that we can have a common semantic specification for use in IPP, the PWG Semantic Model, the PWG PSI project, and the Free Standards Group Job Ticket API which all have a Document object.

51

52

53

This document is available electronically at:

ftp://ftp.pwg.org/pub/pwg/ipp/new_DOC/IPP-document-object.pdf, .doc, .rtf

54

55

55 Copyright (C) 2001, IEEE ISTO. All rights reserved.

56 This document may be copied and furnished to others, and derivative works that comment on, or otherwise explain it
57 or assist in its implementation may be prepared, copied, published and distributed, in whole or in part, without
58 restriction of any kind, provided that the above copyright notice, this paragraph and the title of the Document as
59 referenced below are included on all such copies and derivative works. However, this document itself may not be
60 modified in any way, such as by removing the copyright notice or references to the IEEE-ISTO and the Printer
61 Working Group, a program of the IEEE-ISTO.

62 Title: The Printer Working Group Standard for the Internet Printing Protocol (IPP): Document Object

63 The IEEE-ISTO and the Printer Working Group DISCLAIM ANY AND ALL WARRANTIES, WHETHER EXPRESS
64 OR IMPLIED INCLUDING (WITHOUT LIMITATION) ANY IMPLIED WARRANTIES OF MERCHANTABILITY OR
65 FITNESS FOR A PARTICULAR PURPOSE.

66 The Printer Working Group, a program of the IEEE-ISTO, reserves the right to make changes to the document
67 without further notice. The document may be updated, replaced or made obsolete by other documents at any time.

68 The IEEE-ISTO takes no position regarding the validity or scope of any intellectual property or other rights that might
69 be claimed to pertain to the implementation or use of the technology described in this document or the extent to
70 which any license under such rights might or might not be available; neither does it represent that it has made any
71 effort to identify any such rights.

72 The IEEE-ISTO invites any interested party to bring to its attention any copyrights, patents, or patent applications, or
73 other proprietary rights which may cover technology that may be required to implement the contents of this
74 document. The IEEE-ISTO and its programs shall not be responsible for identifying patents for which a license may
75 be required by a document and/or IEEE-ISTO Industry Group Standard or for conducting inquiries into the legal
76 validity or scope of those patents that are brought to its attention. Inquiries may be submitted to the IEEE-ISTO by e-
77 mail at:

78 ieee-isto@ieee.org.

79 The Printer Working Group acknowledges that the IEEE-ISTO (acting itself or through its designees) is, and shall at
80 all times, be the sole entity that may authorize the use of certification marks, trademarks, or other special
81 designations to indicate compliance with these materials.

82 Use of this document is wholly voluntary. The existence of this document does not imply that there are no other
83 ways to produce, test, measure, purchase, market, or provide other goods and services related to its scope.

84

84 About the IEEE-ISTO

85

86 The IEEE-ISTO is a not-for-profit corporation offering industry groups an innovative and flexible operational forum
87 and support services. The IEEE-ISTO provides a forum not only to develop standards, but also to facilitate activities
88 that support the implementation and acceptance of standards in the marketplace. The organization is affiliated with
89 the IEEE (<http://www.ieee.org/>) and the IEEE Standards Association (<http://standards.ieee.org/>).

90

91 For additional information regarding the IEEE-ISTO and its industry programs visit <http://www.ieee-isto.org>.

92

93

94 About the IEEE-ISTO PWG

95 The Printer Working Group (or PWG) is a Program of the IEEE Industry Standards and Technology Organization
96 (ISTO) with member organizations including printer manufacturers, print server developers, operating system
97 providers, network operating systems providers, network connectivity vendors, and print management application
98 developers. The group is chartered to make printers and the applications and operating systems supporting them
99 work together better. All references to the PWG in this document implicitly mean "The Printer Working Group, a
100 Program of the IEEE ISTO." In order to meet this objective, the PWG will document the results of their work as open
101 standards that define print related protocols, interfaces, procedures and conventions. Printer manufacturers and
102 vendors of printer related software will benefit from the interoperability provided by voluntary conformance to these
103 standards.

104 In general, a PWG standard is a specification that is stable, well understood, and is technically competent, has
105 multiple, independent and interoperable implementations with substantial operational experience, and enjoys
106 significant public support.

107 For additional information regarding the Printer Working Group visit: <http://www.pwg.org>

108

109

110 Contact information:

111 IPP Web Page: <http://www.pwg.org/ipp/>

112 IPP Mailing List: ipp@pwg.org

113 To subscribe to the ipp mailing list, send the following email:

114 1) send it to majordomo@pwg.org

115 2) leave the subject line blank

116 3) put the following two lines in the message body:

117 subscribe ipp

118 end

119 Implementers of this specification are encouraged to join the IPP Mailing List in order to participate in any
120 discussions of clarifications or review of registration proposals for additional names. Requests for additional media
121 names, for inclusion in this specification, should be sent to the IPP Mailing list for consideration.

122

122	Contents	
123	1	Introduction and Summary 1
124	1.1	Scope 1
125	2	Terminology 2
126	2.1	Conformance Terminology..... 2
127	2.2	Other Terminology 2
128	3	Document Operations 3
129	4	Operation Attributes for the Job and Document Creation operations 7
130	4.1	Operation Attributes supplied in Job Creation and Document Creation requests 7
131	4.2	Operation Attributes returned in Job and Document Creation responses 8
132	5	Job Template and Document Template attributes 9
133	6	Job Description and Document Description attributes 15
134	6.1	document-number (integer(1:MAX)) <Document> 17
135	6.2	job-state (type1 enum) <Job> 17
136	6.3	document-state (type1 enum) <Document> 17
137	6.3.1	The “job-state” attribute and the Job Life Cycle 20
138	6.3.2	The “document-state” Document Description attribute and the Document object life Cycle 20
139	6.3.3	Forwarding Servers 21
140	6.3.4	Partitioning of Job/Document States 21
141	6.4	job-state-reasons (1setOf type2 keyword) <Job>..... 22
142	6.5	document-state-reasons (1setOf type2 keyword) <Document> 22
143	7	Printer attributes 27
144	8	New Values for Existing Printer Description Attributes..... 32
145	8.1	operations-supported (1setOf type2 enum) 32
146	9	Conformance Requirements..... 32
147	9.1	Printer conformance requirements 32
148	9.2	Client conformance requirements 33
149	10	Normative References 33
150	11	Informative References 34
151	12	IANA Considerations 35
152	12.1	Attribute Registrations..... 35
153	12.2	Additional Enum Attribute Value Registrations for the “operations-supported” Printer Attribute 38
154	12.3	Operation Registrations 38
155	13	Internationalization Considerations 39
156	14	Security Considerations..... 39
157	15	Contributors 39
158	16	Acknowledgments..... 39

159 17 Author’s Address 39
 160 18 Annex B: Change Log (informative) 39
 161

162 **Tables**

163 Table 1 - List of Document operations 1
 164 Table 2 - Document operations compared to Job operations 3
 165 Table 3 - Operation Attributes supplied in Job and Document Creation operation *requests* 7
 166 Table 4 - Operation attributes returned in Job and Document Creation operation *responses* 9
 167 Table 5 - Job Template and Document Template attributes 11
 168 Table 6 - Job and Document Description attributes 16
 169 Table 7 - "job-state" and "document-state" attribute values 18
 170 Figure 1 - The "job-state" Job Description attribute and the Job object life cycle 20
 171 Figure 2 The "document-state" Document Description attribute and the Document object life Cycle 21
 172 Table 8 - "job-state-reasons" and "document-state-reasons" attribute values 23
 173 Table 9 - Printer attributes (Job Template and Printer Description) 28
 174 Table 10 – Operation-id assignments 32
 175

176

177 1 Introduction and Summary

178 This specification is a proposal to extend the IPP semantics to include a Document object. The Job object is said to
179 contain one or more Document objects. The Document object is created by the existing Send-Document and Send-
180 URI operations. The extension is to add a ~~(new)~~ Document Attributes group (and tag) to the request which contains
181 any Document Template attributes to be applied to this Document object being created, overriding any corresponding
182 Job Template attribute supplied at the job level (including the “document-overrides” operation attributes at the Job or
183 Document level).

184 The intent is to propose this specification as an IPP extension and which will be referenced as part of the PWG
185 Semantic Model. The purpose for specifying the Document object, is so that we can have a common specification
186 for use in IPP, the PWG Semantic Model, the PWG PSI project, and the Free Standards Group Job Ticket API which
187 all have a Document object.

188 1.1 Scope

189 Part of the extension is to allow the client to supply printing instructions, called Document Template attributes, when
190 creating each Document object. An IPP Printer object implementation MAY support most of the existing Job
191 Template attributes as Document Template attributes as well. (The PWG Semantic Model currently calls the Job
192 Template attributes and Document Template attributes simply “Processing” attributes).

193 The Document object is a passive object¹ and is operated upon by the Job. However, there are 7 new operations
194 that affect the Document object after it is created as summarized in Table 1.

195

Table 1 - List of Document operations

<u>Operation Name</u>	<u>Brief Description</u>
<u>Cancel-Current-Document</u>	<u>Cancel the current document that is printing.</u>
<u>Cancel-Document</u>	<u>Cancel the specified Document in the specified Job, but don't remove it.</u>
<u>Get-Document-Attributes</u>	<u>Get requested attributes of specified Document in the specified Job.</u>
<u>Get-Documents</u>	<u>Get requested attributes of all of the Documents in the specified Job.</u>
<u>Delete-Document</u>	<u>Delete the specified Document object and its data.</u>
<u>Set-Document-Attributes</u>	<u>Set the supplied Document attributes on the specified Document</u>
<u>Validate-Document</u>	<u>Validate that the supplied attributes are supported</u>

196 This document specifies the semantics of these seven new operations: ~~Cancel-Current-Document, Cancel-~~
197 ~~Document, Delete-Document, Get-Document-Attributes, Get-Documents, Set-Document-Attributes, and Validate-~~
198 ~~Document~~ by comparing them to the corresponding Job operations.
199

200 **ISSUE 1a: Do we need formal definitions of each Operation or is the comparison with Job operations in** Table 2
201 **sufficient?**

202 This specification also specifies the life cycle of the Document object by defining the “document-state” and
203 “document-state-reasons” attributes. No “document-state-message” is defined since the Job’s “job-state-message”

¹ The Document object is *not* a sub-job. If Job trees are desired where sub-jobs can be on different network nodes, such as in JDF, then a separate specification should be generated for Job trees.

204 text message can identify individual documents when that is needed. Finally, the analogous Document Descriptions
205 attributes that correspond to the Job Description attributes are proposed.

206 ~~ISSUE 01: Should we publish this document as an IETF standards track document or as an IEEE-ISTO standard? If~~
207 ~~the former, since the IETF IPP WG is in the process of being closed down when all the current specifications are~~
208 ~~published, Peter and Tom will propose the specification as individual authors standards track contribution (after PWG~~
209 ~~review). If the latter, it will be published as one more IEEE-ISTO standard in the 5100.n series.~~

210 2 Terminology

211 This section defines terminology used throughout this document.

212 2.1 Conformance Terminology

213 Capitalized terms, such as **MUST**, **MUST NOT**, **REQUIRED**, **SHOULD**, **SHOULD NOT**, **MAY**, **NEED NOT**, and
214 **OPTIONAL**, have special meaning relating to conformance as defined in RFC 2119 [RFC2119] and [RFC2911]
215 section 12.1. If an implementation supports the extension defined in this document, then these terms apply;
216 otherwise, they do not. These terms define conformance to *this document (and [RFC2911]) only*; they do not affect
217 conformance to other documents, unless explicitly stated otherwise. To be more specific:

218 **REQUIRED** - an adjective used to indicate that a conforming IPP Printer implementation **MUST** support the indicated
219 operation, object, attribute, attribute value, status code, or out-of-band value in requests and responses. See
220 [RFC2911] "Appendix A - Terminology for a definition of "support". *Since support of this entire Document Object*
221 *specification is OPTIONAL for conformance to IPP/1.1, the use of the term REQUIRED in this document means*
222 *"REQUIRED if this OPTIONAL Document Object specification is implemented"*.

223 **RECOMMENDED** - an adjective used to indicate that a conforming IPP Printer implementation is recommended to
224 support the indicated operation, object, attribute, attribute value, status code, or out-of-band value in requests and
225 responses. *Since support of this entire Document Object specification is OPTIONAL for conformance to IPP/1.1, the*
226 *use of the term RECOMMENDED in this document means "RECOMMENDED if this OPTIONAL Document Object*
227 *specification is implemented"*.

228 **OPTIONAL** - an adjective used to indicate that a conforming IPP Printer implementation **MAY**, but is **NOT**
229 **REQUIRED** to, support the indicated operation, object, attribute, attribute value, status code, or out-of-band value in
230 requests and responses.

231 2.2 Other Terminology

232 This document uses the same terminology as [RFC2911], such as "client", "Printer", "attribute", "attribute value",
233 "keyword", "operation", "request", "response", and "support" with the same meaning. In addition, the following terms
234 are defined for use in this document:

235 **Job Creation operation** - operations that create Job objects, specifically: Print-Job, Print-URI, and Create-Job as
236 defined in [RFC2911].

237 **Document Creation operation** - operations that create Document objects. Specifically: Send-Document and Send-
238 URI as defined in [RFC2911].

239 **Document Template attribute** - an attribute that the client supplies in a Document Creation operation request

240 **ISSUE 1b:** Should Print-Job and Print-URI also be called Document Creation operations since they create one
 241 Document object? The answer probably depends on the answer to the following issue:

242 **ISSUE 1c:** We're adding a Document Attribute group (tag) to Send-Document and Send-URI so that a client can
 243 supply Document Template attributes. OK that we don't add this group to Print-Job and Print-URI? The problem with
 244 adding the Document Template attribute group to Print-Job and Print-URI requests is that there becomes two ways
 245 for a client to supply many of the Job Template attributes that are Document Processing attributes, such as "media",
 246 "number-up", etc.,. Those two ways in a Print-Job or Print-URI are (1) in the Job Template attribute group or (2) in the
 247 Document Template attribute group. The PWG Semantic Model is defining each Processing attribute to be either a
 248 Job Processing attribute or a Document Processing attribute, but not both, so that there will only be one way to
 249 submit each Processing attribute in a PrintJob operation according to whether it is defined to be a Job Processing
 250 Attribute or a Document Processing Attribute. But for backward compatibility, IPP's Job Template attributes are a
 251 mixture of Job and Document Processing attributes, i.e., "job-priority" and "job-hold-until" versus "media" and
 252 "number-up" are passed mixed together in the Job Template attribute group.

253 **Document Overrides** - a way for a client to specify attributes to apply to specified documents in a multi-document job.
 254 Specifically, as member attributes of the "document-overrides" Job Template attribute in a Job Creation operation or
 255 the "document-overrides" operation attribute in a Document Creation operation as defined in [override].

256 3 Document Operations

257 The Document object semantics are as parallel to the Job object semantics as possible. Therefore, most of the Job
 258 operations have analogous Document operations as shown in Table 2. Operations that can apply only to an entire
 259 job, have no analogous document operation as indicated. This extension adds 7 new Document operations that
 260 operate on the Document object once it is created by either of the existing two: Send-Document and Send-URI
 261 operations.

262 Note: By Document object we mean the object once it become a contained part of a Job object, not before or after.
 263 So a Document object does not represent data in a repository.

264 Table 2 compares the Job and Document operations. The two Conf. columns indicate the conformance
 265 requirements (REQUIRED = REQ, OPTIONAL = OPT) for the Job and Document operations respectively. A "REQ"
 266 in the Document Conformance column means if the Document object is supported. Whether a Document operation
 267 is a method on the Job object or the Document object depends on the modeling regime and is not an essential part
 268 of the semantics described here, since these semantics are intended to apply to both to object-oriented and object-
 269 based protocols, APIs, and implementations.

270 **ISSUE 1d:** Agree that the Cancel-Current-Documents, Delete-Documents, and Set-Documents-Attributes operations
 271 are OPTIONAL and that the Cancel-Document, Get-Documents-Attributes, Get-Documents, and Validate-Documents
 272 operations are REQUIRED as indicated in Table 2 when supporting the Document object?

273 **ISSUE 1a repeated:** Do we need formal definitions of each Operation or is the comparison with Job operations in
 274 Table 2 sufficient?

275 **Table 2 - Document operations compared to Job operations**

Job operations	Job Conf.	Document operations	Doc Conf
Cancel-Current-Job Sets "job-state" to 'canceled' and "job-state-reasons" to	OPT	Cancel-Current-Document Cancels processing of the current Document no matter for which Job, set the "document-state" attributes of the current documents in the job	OPT

Job operations	Job Conf.	Document operations	Doc Conf
'canceled-by-xxx'. Sets "document-state" to 'canceled' and "document-state-reasons" to 'canceled-by-xxx' for any documents that have not yet reached a terminal state ('completed', 'canceled', or 'aborted').		to 'canceled', and proceed with processing the next Document of the current Job or with the next Job if the current Job has no more Document objects. Its an operator emergency method. In some modeling regimes, it may be a Device method, rather than a Job or Document method. Inputs: same as Cancel-Current-Job, plus an OPTIONAL "document-number" operation attribute which the Printer checks to see if the current document being processed is the specified document, else the Printer rejects the operation in a manner analogous to the handling of the OPTIONAL "job-id" input parameter to both Cancel-Current-Job and Cancel-Current-Documents, if supplied. Outputs: same as Cancel-Current-Job	
Cancel-Job Sets "job-state" to 'canceled' and "job-state-reasons" to 'canceled-by-xxx'. Sets "document-state" to 'canceled' and "document-state-reasons" to 'canceled-by-xxx' for any documents that have not yet reached a terminal state ('completed', 'canceled', or 'aborted').	REQ	Cancel-Document Cancels the processing of the document content for the specified Document object in the job, sets the specified document's "document-state" attribute to 'canceled', but does not remove the document from the Job, so that the Job can be resubmitted later. Thus Cancel-Document has the same semantics as Cancel-Job, which only cancels the processing of the job, and doesn't delete the job/document itself. See Delete-Document to delete the Document object itself immediately. This operation does not affect the states of any of the other documents in the job. If the job was processing and there are no further documents to process, the job moves to the 'completed' state as usual whenever there is no more processing to be done. Note: Unlike Reprocess-Job, there is no Reprocess-Document. However, the Reprocess-Job and Restart-Job operations will process all documents in the job, including ones that have been canceled by Cancel-Document. Inputs: same as Cancel-Job, plus a REQUIRED "document-number" operation attribute. Outputs: same as Cancel-Job.	OPT
Create-Job The operation and Job Template attributes remain at the job level on the Job object. Document objects inherit the job level attributes unless the Document Creation operation supplies the attribute. However, the Printer MUST NOT copy down job level attributes to the Document object, including "document-overrides" (except operation attributes that initialize Document Description attributes marked with an "*" in Table 6)	OPT	<i>N/A. See Send-Document and Send-URI</i>	
Get-Job-Attributes	REQ	Get-Document-Attributes Returns all or selected attributes and values of the specified Document object. Two new group names are defined: 'document-template' and	REQ

Job operations	Job Conf.	Document operations	Doc Conf
		<p>'document-description'. Only attributes that were supplied by any client explicitly for the Document object, i.e., in a Send-Document, Send-URI, or Set-Document-Attributes operations are returned. Document attributes supplied as members of the "document-overrides" operation attribute on the Job Creation operations are not returned. In other words, a client sees what clients submitted at the Document level; the Printer MUST NOT merge the attributes that were supplied at the Job level in this response (except Document Description attributes marked with an "*" in Table 6).</p> <p>Inputs: same as Get-Job-Attributes, plus a REQUIRED "document-number" operation attribute.</p> <p>Outputs: same as Get-Job-Attributes.</p>	
Get-Jobs	REQ	<p>Get-Documents</p> <p>Returns all or selected attributes and values of all Document objects in the specified Job. Two new group names are defined: 'document-template' and 'document-description'. Only attributes that were supplied by any client explicitly for the Document object, i.e., in a Send-Document, Send-URI, or Set-Document-Attributes operations are returned. Document attributes supplied as members of the "document-overrides" operation attribute on the Job Creation operations are not returned. In other words, a client sees what clients submitted at the Document level; the Printer MUST NOT merge the attributes that were supplied at the Job level in this response (except Document Description attributes marked with an "*" in Table 6).</p> <p>Inputs: same as Get-Jobs, <u>except a "which-documents" operation attribute (instead of "which-jobs" with values: 'completed', 'not-completed', and 'all' (default) and no equivalent to "my-jobs".</u> <u>plus a REQUIRED "job-id" or "job-uri" operation attribute.</u></p> <p>Outputs: same as Get-Jobs.</p>	REQ
Hold-Job Sets "job-state" to 'pending-held' and "job-state-reasons" to 'job-hold-until-specified'. The Documents' "document-state" and "document-state-reasons" are unaffected.		<i>N/A, can only hold an entire job.</i>	
Print-Job	REQ	<p>Send-Document (existing operation - see [RFC2911])</p> <p>Adds a Document object to the Job that include actual document content. The extension is to add the (new) Document Attributes group (and tag) to the request which contains any Document Template attributes to be applied to this document, overriding any corresponding Job Template attribute supplied at the job level (including "document-overrides" operation attributes at the Job or Document level). It is a method on the Job object.</p>	REQ ²
Print-URI	OPT	<p>Send-URI (existing operation - see [RFC2911])</p> <p>Adds a Document object to the Job that contains a URL for the specified document content. The extension is to add the (new) Document Attributes group (and tag) to the request which contains any Job Template attributes to be applied to this document, overriding any</p>	OPT

² The Send-Document operation is OPTIONAL for a Printer to conform to [RFC2911], but is REQUIRED for a Printer to conform to this Document object specification.

Job operations	Job Conf.	Document operations	Doc Conf
		corresponding Job Template attribute supplied at the job level (including “document-overrides” operation attributes at the Job or Document level). The device then pulls the document content data as needed. It is a method on a Job object.	
Promote-Job	OPT	<i>N/A, can only promote an entire job</i>	
Purge-Jobs Requires operator/administrator privileges.	OPT	Delete-Document Deletes the specified Document object and its data immediately if the Document is still in the ‘pending’ or ‘pending-held’ state (there is no ‘pending-held’ state for Documents), else reject the request. The “document-number” values are not re-assigned, so that the deleted document leaves a hole in the document numbering space for the job. A subsequent Get-Document-Attributes request for this document will return a ‘client-error-not-found’ status code. This operation is similar to the Purge-Jobs operation which immediately deletes all jobs from the Printer. However, Delete-Document only deletes a single Document from the Job. Requires operator/administrator privileges, otherwise a rogue client could submit, then delete, at will using up valuable spooling space. Unprivileged users use Cancel-Document which go through the normal accounting, if any. Inputs: Same as Cancel-Document. Outputs: Same as Cancel-Document.	OPT
Release-Held-New-Jobs	OPT	<i>N/A, can only release entire jobs</i>	
Release-Job	OPT	<i>N/A, can only release an entire job</i>	
Reprocess-Job	OPT	<i>N/A, can only reprocess an entire job</i>	
Restart-Job	OPT	<i>N/A, can only restart an entire job</i>	
Resume-Job If there are no other reasons to hold the job, changes “job-state” to ‘pending’ and removes ‘job-hold-until-specified’ value from “job-state-reasons”. The Documents’ “document-state” and “document-state-reasons” are unaffected.	OPT	<i>N/A, can only resume an entire job</i>	
Schedule-Job-After	OPT	<i>N/A, can only schedule an entire job</i>	
Set-Job-Attributes	OPT	Set-Document-Attributes Changes the values of the specified Document object attributes. If the specified Document object didn’t have the attribute, the attribute is added to the Document object. Such set attributes override any corresponding attributes supplied at the job level, including any “document-overrides” operation attributes supplied at the job or document level. Inputs: same as Set-Job-Attributes, plus a REQUIRED “document-number” operation attribute. Outputs: same as Set-Job-Attributes.	OPT
Suspend-Current-Job Sets “job-state” to ‘processing-stopped’ and	OPT	<i>N/A, can only suspend an entire job in order to run another one</i>	

Job operations	Job Conf.	Document operations	Doc Conf
“job-state-reasons” to ‘job-suspended-by-xxx’. The Documents’ “document-state” and “document-state-reasons” are unaffected.			
Validate-Job	REQ	Validate-Document Checks that the print instructions and the document data are available. Note: The PWG PSI has added this operation for documents. <u>The document data is not sent. However, if the client supplies the “document-uri” operation attribute, the Printer MUST validate that the Document exists and is accessible.</u> Inputs: Same as Validate-Job, with the addition of an OPTIONAL “document-uri” operation attribute to be checked. Outputs: same as Validate-Job.	REQ

276

277 **4 Operation Attributes for the Job and Document Creation operations**

278 This section lists all the Operation attributes that have been defined in other IPP specifications that are used in Job
 279 Creation operations and extends their use to the Document Creation operations defined in the IPP specification.
 280 Operation attributes relate to the operation and do not depend on the printing capabilities of the Printer.

281 **4.1 Operation Attributes supplied in Job Creation and Document Creation requests**

282 Table 3 lists the Operation attributes that clients supply in Job Creation operation *requests*: Print-Job, Print-URI, and
 283 Create-Job and in Document Creation operation *requests*: Send-Document and Send-URI. The value of the “ipp-
 284 attribute-fidelity” operation attribute does *not* affect the Printer’s handling of the other operation attributes, only its
 285 handling of the Job Template attributes (see section 5).

286 The “Supplied” column indicates whether the Operation attribute can be supplied in a Job Creation operation (Job =
 287 y) and/or a Document Creation operation (Doc = y). The Conformance column indicates the conformance
 288 requirements for what the client supplies in a request and the Printer supports in a request. The Reference and
 289 Section columns list the IETF or IEEE-ISTO specification which defines the semantics of the attribute

290 **Table 3 - Operation Attributes supplied in Job and Document Creation operation requests**

Operation attribute <u>name</u> for Job and Document Creation <i>requests</i>	Attribute Syntax	Supplied		Conformance		Reference
		Job	Doc	Client supply	Printer support	
attributes-charset *	charset	y	y	MUST	MUST	[RFC2911] §3.1.4
attributes-natural-language *	naturalLanguage	y	y	MUST	MUST	[RFC2911] §3.1.4
compression	type3 keyword	y ³	y	MAY	MUST	[RFC2911] §3.2.1.1

³ The “compression”, “document-format”, “document-name”, and “document-natural-language” MAY be supplied in the Create-Job Job Creation operation as an extension to [RFC2911] as specified in [override]. If supplied in any Job

Operation attribute <u>name</u> for Job and Document Creation <i>requests</i>	Attribute Syntax	Supplied		Conformance		Reference
		Job	Doc	Client supply	Printer support	
document-format	mimeMediaType	y ³	y	MAY	MUST	[RFC2911] §3.2.1.1
document-name	name(MAX)	y ³	y	MAY	MUST	[RFC2911] §3.2.1.1
document-natural- language	naturalLanguage	y ³	y	MAY	MAY	[RFC2911] §3.2.1.1
document-overrides	1setOf collection	-	y ⁴	MAY	MAY	[override] §5.1
document-uri	uri	-	y	MAY	MAY	[RFC2911] §3.2.2
input-document-number ⁵	integer(1:MAX)	-	y	MAY	MAY	[override] §9.2
ipp-attribute-fidelity	boolean	y	y	MAY	MUST	[RFC2911] §3.2.1.1
job-impressions	integer(0:MAX)	y	y	MAY	MAY	[RFC2911] §3.2.1.1
job-k-octets	integer(0:MAX)	y	y	MAY	MAY	[RFC2911] §3.2.1.1
job-media-sheets	integer(0:MAX)	y	y	MAY	MAY	[RFC2911] §3.2.1.1
job-name	name(MAX)	y	-	MAY	MUST	[RFC2911] §4.3.5
last-document	boolean	-	y	MAY	MUST	[RFC2911] §3.3.1.1
operation-id *	integer(1:0x8FFF)	y	y	MUST	MUST	[RFC2911] §3.1.2
<u>original-requesting-user- name</u>	<u>name(MAX)</u>	<u>y</u>	<u>y</u>	<u>MAY</u>	<u>MAY</u>	[adm-ops] §11.7.2.2
page-overrides	1setOf collection	-	y ⁶	MAY	MAY	[override] §
printer-uri *	uri	y	y	MUST	MUST	[RFC2911] §3.1.5
request-id *	integer(1:MAX)	y	y	MUST	MUST	[RFC2911] §3.1.2
requesting-user-name *	name(MAX)	y	y	SHOULD	MUST	[RFC2911] §3.2.1.1
version-number *	X.Y	y	y	MUST	MUST	[RFC2911] §3.1.8

* - indicates attributes that are defined for *all* operations, not just Job Creation and Document Creation operations

4.2 Operation Attributes returned in Job and Document Creation responses

Table 4 lists the Operation attributes that Printers return in Job Creation operation *responses*: Print-Job, Print-URI, and Create-Job and in Document Creation operation *responses*: Send-Document and Send-URI. The column labeled "Conformance" indicates the conformance for what the Printer returns and what the Printer supports. The Reference and Section columns list the IETF or IEEE-ISTO specification which defines the semantics of the attribute.

Creation operation, the Printer copies them to corresponding Job Description attributes for subsequent Job query. These supplied attributes become defaults for the Documents in the job and used if the client does not supply the corresponding operation attribute in the Send-Document or Send-URI Document Creation operation.

⁴ The "document-overrides" (collection) attribute MAY be supplied by the client in a Send-Document or Send-URI request as an Operation attribute to apply document overrides to this and/or subsequent documents in the job. See the "page-overrides" Job Template attribute in Table 5 for the listing of the member attributes. However, with the introduction of the Document object, the "document-overrides" (collection) attribute SHOULD NOT be used (either as a Job Template attribute or an Operation attribute). Instead, the client simply supplies the Document Template attributes (see Table 5) for each Document Creation request (in a new Document Template attribute group) without needing a collection.

⁵ The "input-document-number" operation attribute sets the Document's "document-number" Document Description attribute (see section 6.1).

⁶ The "page-overrides" (collection) attribute MAY be supplied by the client in a Send-Document or Send-URI request as an Operation attribute to apply page overrides to this and/or subsequent documents in the job. See the "page-overrides" Job Template attribute in Table 5 for the listing of the member attributes. However, with the introduction of the Document object, the "page-overrides" (collection) attribute SHOULD be more simply supplied as one of the Document Template attributes for this document only.

297 **ISSUE 1e:** Currently the returns operation attributes are the same for Job Creation and Document Creation
 298 responses. Should the "document-number" be added as an additional OPTIONAL response attribute to the
 299 Document Creation responses?

300 **Table 4 - Operation attributes returned in Job and Document Creation operation responses**

Operation attribute name	Attribute Syntax Values	Conformance		References
		Printer return	Printer support	
<u>attributes-charset *</u>	charset	<u>MUST</u>	<u>MUST</u>	[RFC2911] §3.1.4
	'utf-8'	<u>MAY</u>	<u>MUST</u>	[RFC2911] §4.1.7
	'us-ascii'	<u>MAY</u>	<u>MAY</u>	[RFC2911] §4.1.7
	'iso-8859-1'	<u>MAY</u>	<u>MAY</u>	[RFC2911] §4.1.7
	'iso-10646-ucs-2'	<u>MAY</u>	<u>MAY</u>	[RFC2911] §4.1.7
<u>attributes-natural-language *</u>	naturalLanguage	<u>MUST</u>	<u>MUST</u>	[RFC2911] §3.1.4
	'en-US'	<u>MAY</u>	<u>MAY</u>	[RFC2911] §4.1.8
<u>detailed-status-message *</u>	text	<u>MAY</u>	<u>MAY</u>	[RFC2911] §3.1.6.3
<u>document-access-error</u>	text	<u>MAY</u>	<u>MAY</u>	[RFC2911] §3.1.6.4
<u>job-id</u>	integer(1:MAX)	<u>MUST</u>	<u>MUST</u>	[RFC2911] §4.3.2
<u>job-uri</u>	uri	<u>MUST</u>	<u>MUST</u>	[RFC2911] §4.3.1
<u>redirect-other-site⁷</u>	uri	<u>MAY</u>	<u>MAY</u>	[not-srv] §???
<u>request-id *</u>	integer(1:32767)	<u>MUST</u>	<u>MUST</u>	[RFC2911] §3.1.2
<u>status-code *</u>	integer(0:32767)	<u>MUST</u>	<u>MUST</u>	[RFC2911] §3.1.6.1
<u>status-message *</u>	text(255)	<u>MAY</u>	<u>MAY</u>	[RFC2911] §3.1.6.2
<u>version-number *</u>	integer(1:255), integer(0:255)	<u>MUST</u>	<u>MUST</u>	[RFC2911] §3.1.8

301 * - indicates attributes that are defined for *all* operations, not just Job Creation operations
 302

303 **5 Job Template and Document Template attributes**

304 Table 5 lists *all* of the Job Template attributes defined in other IPP specifications and lists their corresponding
 305 Document Template attributes defined in this IPP specification. ~~used~~ The Job Template attributes can be supplied in
 306 the Job Creation operations: Print-Job, Print-URI, and Create-Job operations.

307 A subset of these Job Template attributes ~~and~~ (e.g., "document-format" and "media", but not "job-priority") have
 308 corresponding Document Template attributes defined to apply to Documents and are called Document Template
 309 attributes. Document Template attribute can be supplied in Document Creation operations: Send-Document and
 310 Send-URI.

311 ~~Most of these Job Template~~ These Document Template attributes can also be supplied as Document Overrides
 312 using the "document-overrides" Job Template attribute.

⁷ The Printer returns the "redirect-other-site" operation attribute as a hint that it will redirect any future Get-Notification operation requests to a separate Notification Server.

313 A subset of the Document Template attributes that apply to pages (e.g., “media”, but not “document-format” or “job-
 314 priority”) can also be supplied ~~–or–as~~ Page Overrides, using the ~~“document-overrides” and “page-overrides”~~ Job
 315 Template collection attributes, ~~respectively~~ (see ~~[colloverride]~~) or as a Document Template attribute.

316 According to ~~[colloverride]~~, the “document-overrides” (collection) attribute MAY be supplied by the client in a Send-
 317 Document or Send-URI request as an Operation attribute to apply document overrides to this and/or subsequent
 318 documents in the job. See the “document-overrides” Job Template attribute in Table 5 for the listing of the member
 319 attributes. However, with the introduction of the Document object, the “document-overrides” (collection) attribute
 320 SHOULD NOT be used (either as a Job Template attribute or an Operation attribute). Instead, the client simply
 321 supplies the Document Template attributes (see Table 5) for each Document Creation request (in a new Document
 322 Template attribute group) without needing a collection.

323 **ISSUE 02:** What do we want to do with the “document-overrides” collection attributes when supporting the
 324 Document object, which is no longer needed as either a Job Template, Document Template, or operation attribute in
 325 Job and Document Creation requests? Not completely true, since the “document-copies” member attribute of the
 326 “document-overrides” attribute allows the client to supply different attributes to different copies of a document. Has
 327 anyone implemented Document Overrides?

328 Similarly, according to ~~[colloverride]~~, the “page-overrides” (collection) attribute MAY be supplied by the client in a
 329 Send-Document or Send-URI request as an Operation attribute to apply page overrides to this and/or subsequent
 330 documents in the job. See the “page-overrides” Job Template attribute in Table 5 for the listing of the member
 331 attributes. However, with the introduction of the Document object, the “page-overrides” (collection) attribute
 332 SHOULD be more simply supplied as one of the Document Template attributes for ~~this–the~~ document being created
 333 only.

334 **ISSUE 03:** What do we want to do with the “page-overrides” collection attributes when supporting the Document
 335 object, which is still needed as a Job Template and Document Template attribute for overriding attributes in specified
 336 page ranges, but is not needed as an operation attribute on Document Creation requests?

337 The “~~Supplied~~Defined for use” column indicates whether the client MAY supply and the Printer support the attribute
 338 can be supplied at the jJob, dDocument, or pPage lLevel with the following semantics:

Supplied	Description
J=y:	<u>Job Level:</u> The attributes MAY be supplied as Job Template attributes at the Job Level in a Job Creation request (<u>Print-Job, Print-URI, Create-Job</u>) in which case each Document inherits the Job Template attribute as a default which is used unless an attribute at the document level is also supplied. Note: The “multiple-document-handling” attribute controls whether extensive attributes, such as “finishing”, “copies”, affect the entire job as a whole (‘single-xxx’ values) or affect each document separately (‘separate-xxx’ values).
D=y:	<u>Document Level:</u> The attribute MAY be supplied at the Document Level as Document Template attributes in a Document Creation operation (<u>Send-Document, Send-URI</u>), in which case they <u>the supplied Document Templates</u> override any Job Template attributes supplied at the <u>j</u> Job <u>l</u> Level and any “document-overrides” supplied at the Job or Document level.
P=y:	<u>Page Level:</u> The attribute MAY be supplied as a member of the (1) “page-ranges” Job Template attribute at the Job Level in a Job Creation operation or (2) “page-ranges” Document Template attribute at the Document Level to affect the specified range of pages.

340 Job Template and Document Template attributes are OPTIONAL for a Printer to support and for a client to supply in
 341 a Job Creation or Document Creation request or a Document Overrides or Page Overrides. If a Printer supports a
 342 Job Template or Document Template attribute, then it MUST copy the supplied attribute to the Job or Document
 343 object, respectively so that a client MAY query the attributes in subsequent Get-Job-Attributes/Get-Jobs and Get-
 344 Document-Attributes/Get-Documents operations, respectively. The effect of Job Template Attributes supplied in Job
 345 Creation requests are inherited by the Document objects, unless the Document Creation operation supplies the
 346 attribute with a different value. However, the Printer MUST NOT propagate Job Template attributes supplied in Job

347 Creation operations to the Document object. Similarly, the Printer MUST NOT promote Document Template
 348 attributes up to the Job object when no corresponding Job Template attribute was supplied in the Job Creation
 349 operation. Thus the Printer returns in queries only Job Template and Document Template attributes that were
 350 actually supplied by a client.

351 **ISSUE 04: Is this query behavior of not appearing to copying down supplied Job attributes to the Document object**
 352 **and not bubbling up supplied Document attributes to the Job object for Job and Document objects OK?**

353 However, if a Job Template collection attribute is supported (see [coll]), then there are conformance requirements for
 354 which member attributes MUST be supported and which member attributes a client MUST supply as indicated in the
 355 Conformance column for each collection member attribute in Table 5.

356 **Table 5 - Job Template and Document Template attributes**

Job Template / Document Template attribute name	Attribute Syntax	Defined for use			Conformance		Reference
		J	D	P	Client supply	Printer support	
copies	integer(1:MAX)	y ⁸	y	n	MAY	MAY	[RFC2911] §4.2.5
cover-back	collection	y	y	n	MAY	MAY	[prod-print] §3.1
media	type3 keyword name(MAX)				MAY be neither or one of, but NOT both	MUST	[prod-print] §3.1.1
media-col	collection					MAY	[prod-print] §3.1.1
cover-type	type2 keyword				MUST	MUST	[prod-print] §3.1.2
cover-front	collection	y	y	n	MAY	MAY	[prod-print] §3.1
media	type3 keyword name(MAX)				MAY be neither or one of, but NOT both	MUST	[prod-print] §3.1.1
media-col	collection					MAY	[prod-print] §3.1.1
cover-type	type2 keyword				MUST	MUST	[prod-print] §3.1.2
document-overrides	collection	y	n	n	MAY	MAY	[override] §5.1
input-documents	1setOf rangeOfInteger(MAX)				MUST be one or the other, but NOT both	MUST	[override] §5.1.1
output-documents	1setOf rangeOfInteger(MAX)					MUST	[override] §5.1.2
document-copies	1setOf rangeOfInteger(MAX)				MAY	MAY	[override] §5.1.3
document-format	mimeMediaType				MAY	MUST	[override] §5.1.4
document-name	name (MAX)				MAY	MUST	[override] §5.1.5
compression	type3 keyword				MAY	MUST	[override] §5.1.6
document-natural-language	naturalLanguage				MAY	MAY	[override] §5.1.7
page-ranges	1setOf rangeOfInteger (1:MAX)				MAY	MAY	[override] §5.1.8
<i>any other Job Template attributes that affect documents, such as "media" or "media-col"</i>					MAY	MAY	

⁸ The IPP "copies" attribute is an *extensive* attribute, so its effect when supplied at the job level is not always inherited by the documents in a multi-document job. Instead, its effect depends on the value of the "multiple-document-handling" Job Template attribute. The 'single-document' and 'single-document-new-sheet' values produce copies of the job as a whole with the multiple input documents concatenated into a single output document for each job copy. The 'separate-document-uncollated-copies' value produce N copies of the first input document followed by N copies of the second input document, etc. The 'separate-document-collated-copies' produce N successive job copies, each job copy consisting of 1 copy of the first document followed by 1 copy of the second document, etc.

Job Template / Document Template attribute name	Attribute Syntax	Defined for use			Conformance		Reference
		J	D	P	Client supply	Printer support	
finishings	1setOf type2 enum	y ⁹	y	y	MAY be neither or one of, but NOT both	MAY, MUST if “finishing-col” is supported	[RFC2911] §4.2.6 [finish] §2
finishings-col	collection	y ^{9,5}	y	y		MAY	[prod-print] §3.2
finishing-template	name(MAX)				MAY	MAY	[prod-print] §3.2.1
stitching	collection				MAY	MAY	[prod-print] §3.2.2
stitching-reference-edge	type2 keyword				MUST	MUST	[prod-print] §3.2.2.1
stitching-offset	integer (0:MAX)				MUST	MUST	[prod-print] §3.2.2.2
stitching-locations	1setOf integer(0:MAX)				MUST	MUST	[prod-print] §3.2.2.3
force-front-side	1setOf integer(1:MAX)	y ¹⁰	y	y	MAY	MAY	[prod-print] §3.3
imposition-template	type2 keyword name(MAX)	y	y	y	MAY	MAY	[prod-print] §3.4
insert-sheet	1setOf collection	y ^{10,6}	y	y	MAY	MAY	[prod-print] §3.5
insert-after-page-number	integer(0:MAX)				MUST	MUST	[prod-print] §3.5.1
insert-count	integer(0:MAX)				MAY	MUST	[prod-print] §3.5.2
media	type3 keyword name(MAX)				MUST be one or the other, but NOT both	MUST	[prod-print] §3.5.3
media-col	collection					MAY	[prod-print] §3.5.3
job-account-id	name(MAX)	y	n	n	MAY	MAY	[prod-print] §3.6
job-accounting-sheets	collection	y	n	n	MAY	MAY	[prod-print] §3.8
job-accounting-sheets-type	type3 keyword name(MAX)				MUST	MUST	[prod-print] §3.8.1
media	type3 keyword name(MAX)				MAY be neither or one of, but NOT both	MUST	[prod-print] §3.8.2
media-col	collection					MAY	[prod-print] §3.8.2
job-accounting-output-bin	type3 keyword name(MAX)				MAY	MAY	[prod-print] §3.8.3
job-accounting-user-id	name(MAX)	y	n	n	MAY	MAY	[prod-print] §3.7
job-error-sheet	collection	y	n	n	MAY	MAY	[prod-print] §3.9
job-error-sheet-type	type3 keyword name(MAX)				MUST	MUST	[prod-print] §3.9.1
job-error-sheet-when	type2 keyword				MAY	MAY	[prod-print] §3.9.2
media	type3 keyword name(MAX)				MAY be neither or one of, but NOT both	MUST	[prod-print] §3.9.3
media-col	collection					MAY	[prod-print] §3.9.3

⁹ The IPP “finishings” and “finishings-col” attributes are *extensive* attributes, so their effect when supplied at the job level is not always inherited by the documents in a multi-document job. Instead, their effect depends on the value of the “multiple-document-handling” Job Template attribute. The ‘single-document’ and ‘single-document-new-sheet’ cause the finishing to be applied to each job copy as a whole. The ‘separate-documents-collated-copies’ and ‘separate-document-uncollated-copies’ values cause the finishing to be applied to each document.

¹⁰ The effect of the IPP “force-front-side” and “insert-sheet” attributes when supplied at the job level of a multi-document job depends on the value of the “multiple-document-handling” Job Template attribute. For the ‘single-document’ and ‘single-document-new-sheet’ values, the pages are numbered as a single set from 1 to n for the job as a whole. For the ‘separate-documents-collated-copies’ and ‘separate-document-uncollated-copies’ values, the pages are numbered from 1 to n for each document separately.

Job Template / Document Template attribute name	Attribute Syntax	Defined for use			Conformance		Reference
		J	D	P	Client supply	Printer support	
job-hold-until	type3 keyword name(MAX)	y	n	n	MAY	MAY	[RFC2911] §4.2.2
job-message-to-operator	text(MAX)	y	n	n	MAY	MAY	[prod-print] §3.10
job-priority	integer(1:100)	y	n	n	MAY	MAY	[RFC2911] §4.2.1
job-sheet-message	text(MAX)	y	n	n	MAY	MAY	[prod-print] §3.12
job-sheets	type3 keyword name(MAX)	y	n	n	MAY be neither or one of, but NOT both	MAY, MUST if "job-sheets-col" supported	[RFC2911] §4.2.3
job-sheets-col	collection	y	n	n			MAY
job-sheets	type3 keyword name(MAX)				MUST	MUST	[prod-print] §3.11.1
media	type3 keyword name(MAX)				MUST be one or the other, but NOT both	MUST	[prod-print] §3.11.2
media-col	collection					MAY	[prod-print] §3.11.2
media	type3 keyword name(MAX)	y	y	y	MAY be neither or one of, but NOT both	MAY, MUST if "media-col" supported	[RFC2911] §4.2.11
media-col	collection	y	y	y			MAY
media-key	type3 keyword name(MAX)				MAY	MAY	[prod-print] §3.13.1
media-type	type3 keyword name(MAX)				MAY	MAY	[prod-print] §3.13.2
media-info	text(255)				MAY	MAY	[prod-print] §3.13.3
media-color	type3 keyword name(MAX)				MAY	MAY	[prod-print] §3.13.4
media-preprinted	type3 keyword name(MAX)				MAY	MAY	[prod-print] §3.13.5
media-hole-count	integer(0:MAX)				MAY	MAY	[prod-print] §3.13.6
media-order-count	integer(1:MAX)				MAY	MAY	[prod-print] §3.13.7
media-size	collection				MAY	MUST	[prod-print] §3.13.8
x-dimension	integer(0:MAX)				MUST	MUST	[prod-print] §3.13.8.1
y-dimension	integer(0:MAX)				MUST	MUST	[prod-print] §3.13.8.2
media-weight-metric	integer(0:MAX)				MAY	MAY	[prod-print] §3.13.9
media-front-coating	type3 keyword name(MAX)				MAY	MAY	[prod-print] §3.13.10
media-back-coating	type3 keyword name(MAX)				MAY	MAY	[prod-print] §3.13.10
media-recycled	type3 keyword name(MAX)				MAY	MAY	[prod-print] §3.13.11
media-input-tray-check	type3 keyword name(MAX)	y	y	y	MAY	MAY	[prod-print] §3.14

Job Template / Document Template attribute name	Attribute Syntax	Defined for use			Conformance		Reference
		J	D	P	Client supply	Printer support	
multiple-document-handling	type2 keyword	y	n	n	MAY	MUST if multiple document jobs supported	[RFC2911] §4.2.4
number-up	integer(1:MAX)	y	y	y	MAY	MAY	[RFC2911] §4.2.9
orientation-requested	type2 enum	y	y	y	MAY	MAY	[RFC2911] §4.2.10
output-bin	type2 keyword name(MAX)	y	y	n	MAY	MAY	[output-bin] §2.1
page-delivery	type2 keyword	y	y	n	MAY	MAY	[prod-print] §3.15
page-order-received	type2 keyword	y	y	n	MAY	MAY	[prod-print] §3.16
page-overrides	1setOf collection	y ¹¹	y	n/a	MAY	MAY	[override] §5.2
input-documents	1setOf rangeOfInteger(MAX)				MUST be one or the other, but NOT both	MUST	[override] §5.2.1
output-documents	1setOf rangeOfInteger(MAX)					MUST	[override] §5.2.2
document-copies	1setOf rangeOfInteger(MAX)				MAY	MAY	[override] §5.2.3
pages	1setOf rangeOfInteger(MAX)				MUST	MUST	[override] §5.2.4
<i>any other Job Template attributes that affect pages, such as "media" or "media-col"</i>					MAY	MAY	
page-ranges	1setOf rangeOfInteger(1:MAX)	y ^{11z}	y	n/a	MAY	MAY	[RFC2911] §4.2.7
pages-per-subset	1setOf integer(1:MAX)	y ¹²	y	n/a	MAY	MAY	[prod-print] §5.3
presentation-direction-number-up	type2 keyword	y	y	y	MAY	MAY	[prod-print] §3.17
print-quality	type2 enum	y	y	y	MAY	MAY	[RFC2911] §4.2.13
printer-resolution	resolution	y	y	y	MAY	MAY	[RFC2911] §4.2.12
separator-sheets	collection	y	y	y	MAY	MAY	[prod-print] §3.18
separator-sheets-type	type3 keyword name(MAX)				MUST	MUST	[prod-print] §3.18.1
media	type3 keyword name(MAX)				MAY be neither or one of, but NOT both	MUST	[prod-print] §3.18.2
media-col	collection					MAY	[prod-print] §3.18.2
sheet-collate	type2 keyword	y	y	n	MAY	MAY	[job-prog] §3.1
sides	type2 keyword	y	y	y	MAY	MAY	[RFC2911] §4.2.8

¹¹ The effect of the IPP "page-overrides" and "page-ranges", attributes when supplied at the job level of a multi-document job depends on the value of the "multiple-document-handling" Job Template attribute. For the 'single-document' and 'single-document-new-sheet' values, the pages are numbered as a single set from 1 to n for the job as a whole. For the 'separate-documents-collated-copies' and 'separate-document-uncollated-copies' values, the pages are numbered from 1 to n for each document separately.

¹² The IPP "pages-per-subset" attribute can only be used when the "multiple-document-handling" Job Template attribute is 'separate-documents-collated-copies' or 'separate-documents-uncollated-copies', since the purpose of the "pages-per-subset" attribute is to produce separate output documents for each subset. Otherwise, the Printer MUST ignore the "pages-per-subset" attribute.

Job Template / Document Template attribute name	Attribute Syntax	<u>Defined for use</u>			Conformance		Reference
		J	D	P	Client supply	Printer support	
x-image-position	type2 keyword	y	y	y	MAY	MAY	[prod-print] §3.19.2
x-image-shift	integer(MIN:MAX)	y	y	y	MAY	MAY	[prod-print] §3.19.3
x-side1-image-shift	integer(MIN:MAX)	y	y	y	MAY	MAY	[prod-print] §3.19.4
x-side2-image-shift	integer(MIN:MAX)	y	y	y	MAY	MAY	[prod-print] §3.19.5
y-image-position	type2 keyword	y	y	y	MAY	MAY	[prod-print] §3.19.6
y-image-shift	integer(MIN:MAX)	y	y	y	MAY	MAY	[prod-print] §3.19.7
y-side1-image-shift	integer(MIN:MAX)	y	y	y	MAY	MAY	[prod-print] §3.19.8
y-side2-image-shift	integer(MIN:MAX)	y	y	y	MAY	MAY	[prod-print] §3.19.9

357

358 **6 Job Description and ~~(new)~~ Document Description attributes**

359 Table 6 lists all the Job Description defined in other IPP specifications and the corresponding Document Description
 360 attributes defined in this IPP specification. Job Description and Document Description attributes are Job object and
 361 Document object attributes, respectively, that are filled in by the Printer. Some Job/Document Description attribute
 362 values are supplied by the client in the Job/Document Creation operation using corresponding Operation attributes
 363 as flagged with an-***.

364 The column labeled "attribute syntax" indicates the attribute syntax (see [RFC2911] section 4.1). The Printer
 365 conformance is indicated along with the reference to the specification in which the attribute is defined. The
 366 conformance for Document Description attributes (if the Printer supports the Document object) is the same as the
 367 corresponding Job Description attributes.

368 Note: There are no corresponding Page Range (or Page Override) Description attributes. The Page Range is not an
 369 object with a state and it cannot be queried.

370 Legend:

371 **[job-]** indicates an attribute that shouldn't have had a "job-" prefix in its name in [RFC2911], so that the same
 372 attribute could also apply to the Document object as a Document Description attribute. Note: For the PWG
 373 Semantic Model, the "job-" prefix is proposed to be dropped.

374
 375 **ISSUE 05:** Should we sort the attributes ignoring the [job-]? Currently the "job-" is used in the sort for
 376 attributes.

377
 378 **ISSUE 06:** How will we register these attributes with IANA, since they will be registered for IPP use, with the
 379 "job-" prefix. Do we add the ones without "job-" as aliases to the IANA registry as is done for charset
 380 registrations?

381 **“-”** indicates that the Job or Document attribute is *not* defined.
 382 **“**”** ~~indicates a fundamental Document Description that indicates a fundamental Job and/or Document~~
 383 ~~Description attribute that the client MAY supply the values for in a corresponding Operation attribute. Such a~~
 384 ~~Job Level attribute is a client-supplied default for each of the Document objects, in case the client doesn't~~
 385 ~~supply the corresponding Operation attribute at the Document level. Furthermore, when the client supplies~~
 386 ~~the value at the Job level, but not at the Document level, the Printer MUST appear to copy down the value to~~
 387 ~~each Document object as returned in Get-Document-Attributes and Get-Documents operation responses.~~

388 ****** indicates a Job and/or Document Description attribute that the client MAY supply the values for in a
 389 corresponding Operation attribute. indicates Job Description attributes to hold the corresponding Operation
 390 attributes supplied by the client or defaulted by the Printer. This behavior is new to go with the Document
 391 object extension.
 392

Table 6 - Job and (new) Document Description attributes

IPP Job Description / Document Description attribute name	IPP Attribute Syntax	Job	Doc	Printer conformance	Reference
attributes-charset	charset	y	y	MUST	[RFC2911] §4.3.19
attributes-natural-language	naturalLanguage	y	y	MUST	[RFC2911] §4.3.20
compression**	(type3 keyword)	y*	y*	MUST	[RFC2911] §3.2.1.1
current-page-order	type2 keyword	y ¹³	y	MAY	[prod-print] §4.1
date-time-at-completed	dateTime	y	y	MAY	[RFC2911] §4.3.14.7
date-time-at-creation	dateTime	y	y	MAY	[RFC2911] §4.3.14.5
date-time-at-processing	dateTime	y	y	MAY	[RFC2911] §4.3.14.6
document-format**	documentFormat	y*	y*	MUST	[RFC2911] §3.2.1.1
document-name**	name(MAX)	y*	y*	MUST	[RFC2911] §3.2.1.1
document-natural-language**	naturalLanguage	y*	y*	MAY	[RFC2911] §3.2.1.1
document-number	integer(0:MAX)	-	y	MUST	[this spec] §6.1
document-state	type1 enum	-	y	MUST	[this spec] §6.3.2
document-state-reasons	1setOf type2 keyword	-	y	MUST	[this spec] §6.5
impressions-completed-current-copy	integer(0:MAX)	y	y	MAY	[job-prog] §4.4
job-collation-type	type2 enum	y	-	MAY	[job-prog] §4.1
[job]-detailed-status-message	1setOf text (MAX)	y	y	MAY	[RFC2911] §4.3.10
[job]-document-access-errors	1setOf text(MAX)	y	y	MAY	[RFC2911] §4.3.11
job-id	integer(1:MAX)	y	- ¹⁴	MUST	[RFC2911] §4.3.2
[job]-impressions**	integer(0:MAX)	y	y*	MAY	[RFC2911] §4.3.17.2
[job]-impressions-completed	integer(0:MAX)	y	y	MAY	[RFC2911] §4.3.18.2
[job]-k-octets**	integer(0:MAX)	y	y*	MAY	[RFC2911] §4.3.17.1
[job]-k-octets-processed	integer(0:MAX)	y	y	MAY	[RFC2911] §4.3.18.1
[job]-media-sheets**	integer(0:MAX)	y	y*	MAY	[RFC2911] §4.3.17.3
[job]-media-sheets-completed	integer(0:MAX)	y	y	MAY	[RFC2911] §4.3.18.3
job-message-from-operator	text(127)	y	-	MAY	[RFC2911] §4.3.16
[job]-more-info	uri	y	y	MAY	[RFC2911] §4.3.4
job-name	name(MAX)	y	- ¹⁵	MUST	[RFC2911] §4.3.5
job-originating-user-name	name (MAX)	y	-	MUST	[RFC2911] §4.3.6
[job]-printer-up-time	integer (1:MAX)	y	y	MUST	[RFC2911] §4.3.14.4
job-printer-uri	uri	y	-	MUST	[RFC2911] §4.3.3
job-state	type1 enum	y	- ¹⁶	MUST	[RFC2911] §4.3.7
job-state-message	text(MAX)	y	- ¹⁷	MAY	[RFC2911] §4.3.9
job-state-reasons	1setOf type2 keyword	y	- ¹⁸	MUST	[RFC2911] §4.3.8

¹³ When documents in a multiple document job have the same page order, the Printer populates both the Job and Document “current-page-order” with the same value, so that clients that only know about the Job Description attribute will get a value. When the page orders differ, the Printer doesn’t populate the “current-page-order” Job Description attribute, but only the Document Description attribute of each Document.

¹⁴ The Document Description attribute that corresponds to the “job-id” Job Description attribute is the (new) “document-number” attribute.

¹⁵ The Document Description attribute that corresponds to the “job-name” Job Description attribute is the (existing) “document-name” attribute defined in [RFC2911].

¹⁶ The Document Description attribute that corresponds to the “job-state” Job Description attribute is the (new) “document-state” attribute.

¹⁷ There is no Document Description attribute that corresponds to the “job-state-message”. Printers can use the “job-state-message” to describe any document level conditions.

¹⁸ The Document Description attribute that corresponds to the “job-state-reasons” Job Description attribute is the (new) “document-state-reasons” attribute.

IPP Job Description / Document Description attribute name	IPP Attribute Syntax	Job	Doc	Printer conform ance	Reference
job-uri	uri	y	-	MUST	[RFC2911] §4.3.1
[job-]warnings-count	integer(0:MAX)	y	y	MAY	[override] §6.1
last-document**	boolean	-	y*	MAY	[RFC2911] §4.3.12
number-of-documents	integer(0:MAX)	y	-	MAY	[RFC2911] §4.3.15
number-of-intervening-jobs	integer(0:MAX)	y	-	MAY	[RFC2911] §4.3.13
output-device-assigned	name(127)	y	-	MAY	[RFC2911] §4.3.7.2
sheet-completed-copy-number	integer(0:MAX)	y	y	MAY	[job-prog] §4.2
sheet-completed-document-number	integer(0:MAX)	y	-	MAY	[job-prog] §4.3
time-at-completed	integer (MIN:MAX)	y	y	MUST	[RFC2911] §4.3.14.3
time-at-creation	integer (MIN:MAX)	y	y	MUST	[RFC2911] §4.3.14.1
time-at-processing	integer (MIN:MAX)	y	y	MUST	[RFC2911] §4.3.14.2

394 ****** and ****** See the description in the Legend before the table.
 395

396 Most of the existing “job-state” and “job-state-reasons” Job Description attribute values apply equally well to
 397 individual documents in a multi-document job (with removal of the ‘job-’ prefix for those that apply to both Job and
 398 Document). Furthermore, the job states are completely service-type neutral, so they can apply to scanning, faxing,
 399 formatting processes as well. The job state reasons have a number of reasons that are print service specific, but
 400 most can apply to other types of service as well. The reason for separating state from reasons, is so that the states
 401 can be the fundamental states that most implementations have, while the state reasons can vary depending on the
 402 sophistication of the system. The states are the ones that clients are most likely to base actions upon, and the state
 403 reasons are more information, both for programs and people.

404 The descriptions of the new “document-state” and “document-state-reasons” attributes are merged in with the
 405 existing “job-state” and “job-state-reasons”. Such merging shows the parallelism in the description to aid
 406 understanding and implementation and so that future maintenance will continue this strong parallelism. The “/”
 407 character separates the words: Job from Document so that the same description can serve for both Job and
 408 Document objects.

409 **6.1 document-number (integer(1:MAX)) <Document>**

410 This Document Description attribute is the ordinal number of the document within the job which determines its order
 411 of being printed in a multi-document job. The Printer generates the values monotonically increasing from 1 for a job.
 412 However, the client MAY supply the value in the “input-document-number” operation attribute.

413 **6.2 job-state (type1 enum) <Job>**

414 **6.3 document-state (type1 enum) <Document>**

415 The REQUIRED “job-state” and the REQUIRED “document-state” attribute identifies the current state of the job
 416 and document, respectively. Even though IPP defines seven values for job/document states (plus the out-of-band
 417 'unknown' value - see [RFC2911] section 4.1), implementations only need to support those states which are
 418 appropriate for the particular implementation. In other words, an IPP Printer object implementation supports only
 419 those job/document states implemented by the output device and available to the IPP Printer object implementation.

420 Table 7 lists the “job-state” and “document-state” attribute values.

Table 7 - "job-state" and "document-state" attribute values

Values	"job-state"	"document-state"
<u>3 pending</u>	<u>y</u>	<u>y</u>
<u>4 pending-held</u>	<u>y</u>	<u>n/a</u>
<u>5 processing</u>	<u>y</u>	<u>y</u>
<u>6 processing-stopped</u>	<u>y</u>	<u>n/a</u>
<u>7 canceled</u>	<u>y</u>	<u>y</u>
<u>8 aborted</u>	<u>y</u>	<u>y</u>
<u>9 completed</u>	<u>y</u>	<u>y</u>

The (JD) and (J) notation below indicates whether the keyword is defined for the "job-state" and "document-state" attributes or just the "job-state" attribute as indicated in Table 7. Standard enum values are:

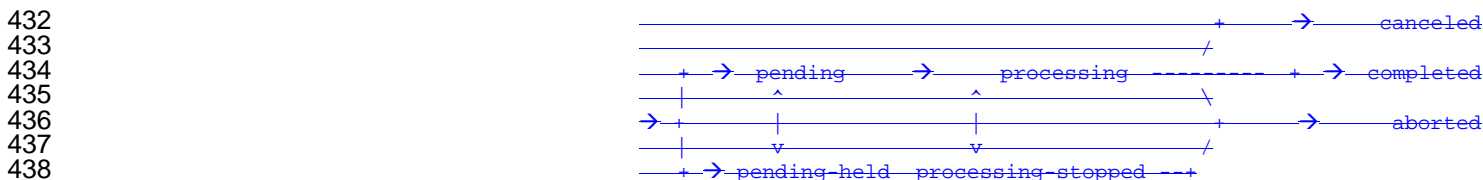
Value	Symbolic Name and Description
'3'	'pending' (JD): The job is a candidate to start processing, but is not yet processing. <u>The document has not started to be processed at all.</u>
'4'	'pending-held' (J): The job is not a candidate for processing for any number of reasons but will return to the 'pending' state as soon as the reasons are no longer present. The job's "job-state-reason" attribute MUST indicate why the job is no longer a candidate for processing. <u>The 'pending-held' state does not apply to the Document object's "document-state" attribute.</u>
'5'	'processing' (JD): One or more of: <ol style="list-style-type: none"> 1. The job is using, or is attempting to use, one or more purely software processes that are analyzing, creating, or interpreting a PDL, etc., 2. The job is using, or is attempting to use, one or more hardware devices that are interpreting a PDL, making marks on a medium, and/or performing finishing, such as stapling, etc., 3. The Printer object has made the job ready for printing, but the output device is not yet printing it, either because the job hasn't reached the output device or because the job is queued in the output device or some other spooler, awaiting the output device to print it. <p>When the job is in the 'processing' state, the entire job/document state includes the detailed status represented in the Printer object's "printer-state", "printer-state-reasons", and "printer-state-message" attributes.</p> <p><u>On the other hand, the 'processing' state for the Document indicates that the Document has begun to be processed. Even if the job stops being processed, the Document remains in the 'processing' state until it moves to one of the three terminal states.</u></p> <p>Implementations MAY, though they NEED NOT, include additional values in the job's/document's "job-state-reasons"/"document-state-reasons" attribute to indicate the progress of the job/document, such as adding the 'job-printing'/'printing' value to indicate when the output device is actually making marks on paper and/or the 'processing-to-stop-point' value to indicate that the IPP object is in the process of canceling or aborting the job/document. Most implementations won't bother with this nuance.</p>
'6'	'processing-stopped' (J): The job has stopped while processing for any number of reasons and will return to the 'processing' state as soon as the reasons are no longer present.

Value	Symbolic Name and Description
	<p>The job's "job-state-reason" attribute MAY indicate why the job has stopped processing. For example, if the output device is stopped, the 'printer-stopped' value MAY be included in the job's "job-state-reasons" attribute.</p> <p>Note: When an output device is stopped, the device usually indicates its condition in human readable form locally at the device. A client can obtain more complete device status remotely by querying the Printer object's "printer-state", "printer-state-reasons" and "printer-state-message" attributes.</p> <p><u>The 'processing-stopped' state does not apply to the Document object's "document-state" attribute.</u></p>
'7'	<p>'canceled' (JD): The job/document has been canceled by a Cancel-Job/Cancel-Document operation and the Printer object has completed canceling the job/document and all job/document status attributes have reached their final values for the job/document. While the Printer object is canceling the job/document, the job/document remains in its current state, but the job's/document's "job-state-reasons"/"document-state-reasons" attribute SHOULD contain the 'processing-to-stop-point' value and one of the 'canceled-by-user', 'canceled-by-operator', or 'canceled-at-device' value. When the job/document moves to the 'canceled' state, the 'processing-to-stop-point' value, if present, MUST be removed, but the 'canceled-by-xxx', if present, MUST remain.</p>
'8'	<p>'aborted' (JD): The job/document has been aborted by the system, usually while the job/document was in the 'processing' or 'processing-stopped' state and the Printer has completed aborting the job/document and all job/document status attributes have reached their final values for the job/document. While the Printer object is aborting the job/document, the job/document remains in its current state, but the job's/document's "job-state-reasons"/"document-state-reasons" attribute SHOULD contain the 'processing-to-stop-point' and 'aborted-by-system' values. When the job/document moves to the 'aborted' state, the 'processing-to-stop-point' value, if present, MUST be removed, but the 'aborted-by-system' value, if present, MUST remain.</p>
'9'	<p>'completed' (JD): The job/document has completed successfully or with warnings or errors after processing and all of the job/document media sheets have been successfully stacked in the appropriate output bin(s) and all job/document status attributes have reached their final values for the job/document. The job's/document's "job-state-reasons"/"document-state-reasons" attribute SHOULD contain one of: 'completed-successfully', 'completed-with-warnings', or 'completed-with-errors' values.</p>

425 The final value for this attribute MUST be one of: 'completed', 'canceled', or 'aborted' before the Printer removes the
 426 job/document altogether. The length of time that jobs/document remain in the 'canceled', 'aborted', and 'completed'
 427 states depends on implementation.

428 Jobs/documents reach one of the three terminal states: 'completed', 'canceled', or 'aborted', after the jobs/documents
 429 have completed all activity, including stacking output media, after the jobs/documents have completed all activity,
 430 and all job/document status attributes have reached their final values for the job/document.

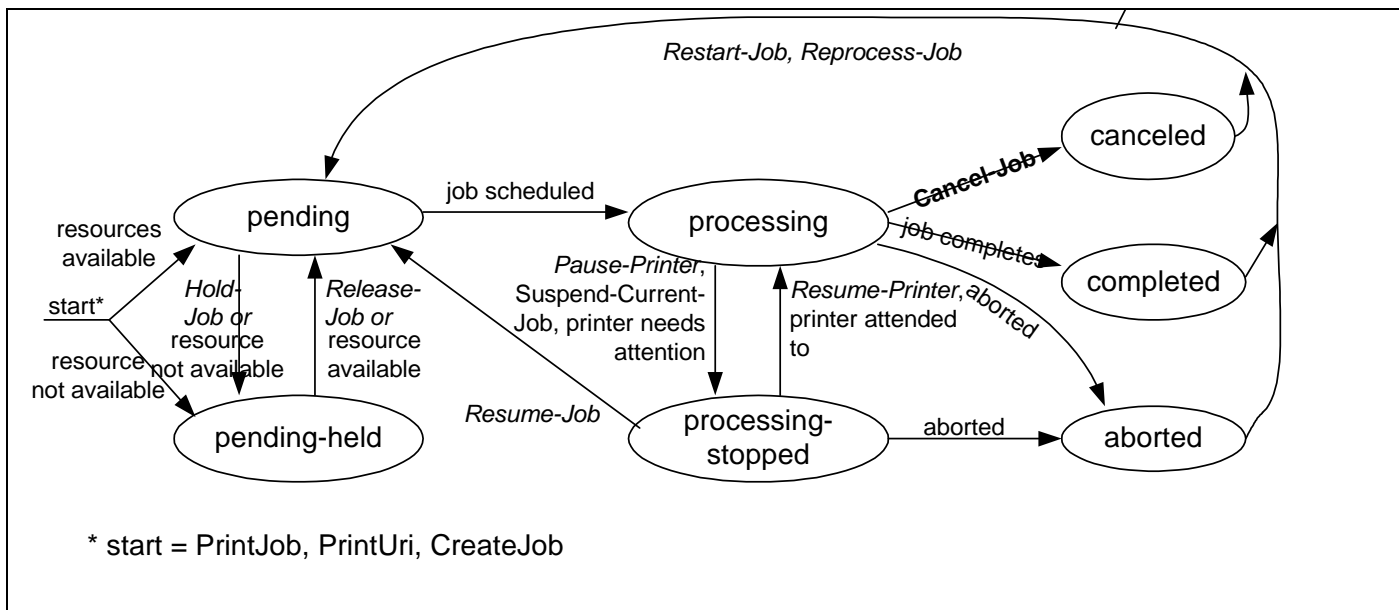
431 The following figure shows the normal job state transitions



439
440
441

6.3.1 The “job-state” attribute and the Job Life Cycle

The “job-state” attribute is one of the most important Job Description attributes. Figure 1 shows the values of the “job-state” attribute and the Job object life cycle as affected by actions on the Job, Printer, and job processing.



442

Figure 1 - The “job-state” Job Description attribute and the Job object life cycle

443
444
445

Normally a job progresses from left to right. Other state transitions are unlikely, but are not forbidden. Not shown are the transitions to the 'canceled' state from the 'pending', 'pending-held', and 'processing-stopped' states.

446
447

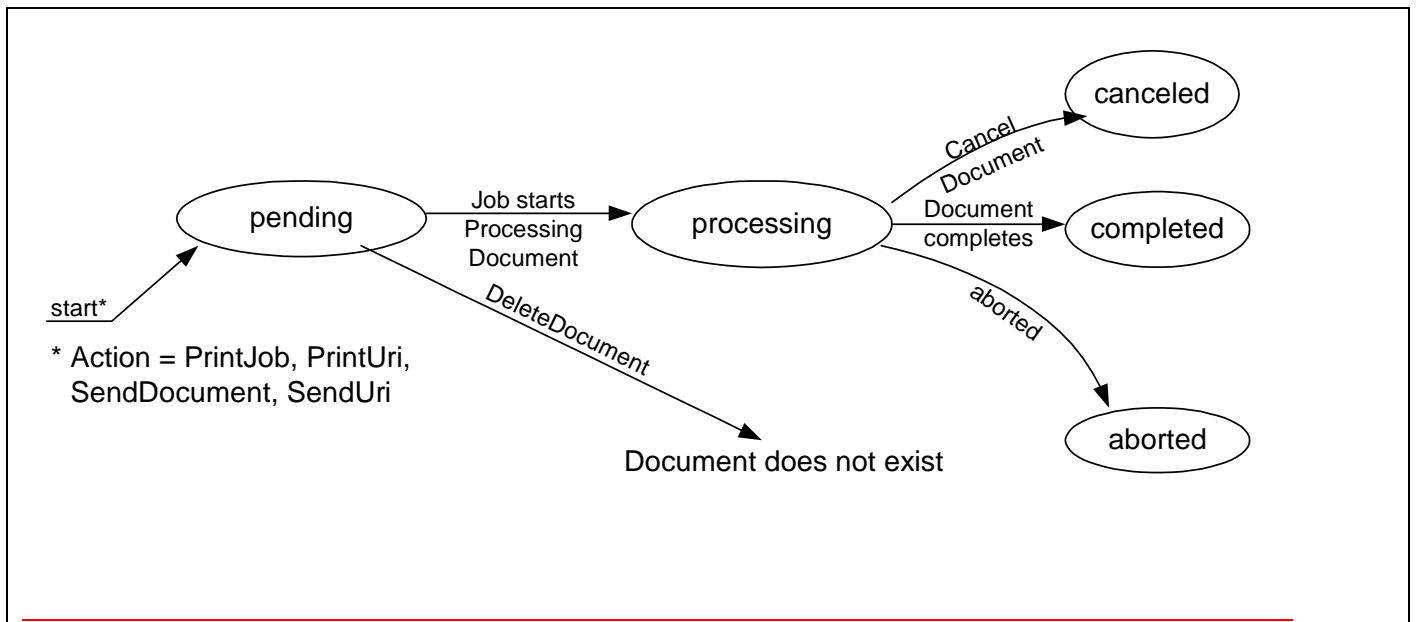
6.3.2 The “document-state” Document Description attribute and the Document object life Cycle

448
449
450
451
452
453
454

The “document-state” attribute is one of the most important Document Description attributes. Figure 2 shows the values of the “document-state” attribute and the Document object life cycle as affected by actions on the Job, Document, Printer, and job processing. Documents are not active objects and their life cycle is closely tied to the lifecycle of a Job¹⁹. Documents basically have three states. The first is waiting to be processed by a Job (i.e. pending). The second state is from the time the Job first starts processing the Document (i.e., processing) and until it reaches one of its terminal states. The third state for a Document is one of its terminal states (i.e., completed, canceled, or aborted).

455
456

¹⁹ The Document object is not really a sub-job. If the Document object were its own independent active object, i.e., were a sub-job, then the Document state would affect the job state and there would be complex and debatable roll-up rules for how the various “document-state” values of all of the Job’s document are rolled up to give a single value for the Job’s “job-state” attribute. Instead, the Job state reflects the overall processing of the job and is the same whether or not the Document object is supported.



457

458 **Figure 2 The “document-state” Document Description attribute and the Document object life Cycle**

459 A Document object has a much simpler life cycle than a Job object. A Document always progresses from left to right
 460 in the state diagram. No other state transitions are defined.

461 **6.3.3 Forwarding Servers:**

462 As with all other IPP attributes, if the implementation can not determine the correct value for this attribute, it SHOULD
 463 respond with the out-of-band value 'unknown' (see [RFC2911] Section 4.1) rather than try to guess at some possibly
 464 incorrect value and give the end user the wrong impression about the state of the Job/Document object. For
 465 example, if the implementation is just a gateway into some printing system from which it can normally get status, but
 466 temporarily is unable, then the implementation should return the 'unknown' value. However, if the implementation is
 467 a gateway to a printing system that never provides detailed status about the print job/document, the implementation
 468 MAY set the IPP Job/Document object's state to 'completed', provided that it also sets the 'queued-in-device' value in
 469 the job's/document's "job-state-reasons"/"document-state-reasons" attribute (see "job-state-reasons"/"document-
 470 state-reasons" attribute below).

471 **6.3.4 Partitioning of Job/Document States:**

472 This section partitions the Job/document states into phases: Job/Document Not Completed, Job/Document
 473 Retention, Job/Document History, and Job/Document Removal. This section also explains the 'job-restartable' value
 474 of the "job-state-reasons" Job Description attribute for use with the Restart-Job operation.

475 **Job/Document Not Completed:** When a job is in the 'pending', 'pending-held', 'processing', or 'processing-stopped'
 476 states, the job is not completed. When a Document is in the 'pending' or 'processing' state, it is not completed.

477 **Job Retention:** When a job enters one of the three terminal job states: 'completed', 'canceled', or 'aborted', the IPP
 478 Printer object MAY "retain" the job in a restartable condition for an implementation-defined time period. This time
 479 period MAY be zero seconds and MAY depend on the terminal job state. This phase is called Job Retention. While
 480 in the Job Retention phase, the job's document data is retained and a client may restart the job using the Restart-Job
 481 operation. If the IPP object supports the Restart-Job operation, then it SHOULD indicate that the job is restartable by
 482 adding the 'job-restartable' value to the job's "job-state-reasons" attribute (see Section 6.4) during the Job Retention

483 phase. If the Printer supports the Document object, then the Get-Document-Attributes and Get-Documents
484 operations MUST be supported while the job is in the Job Retention phase.

485 **Job History:** After the Job Retention phase expires for a job, the Printer object deletes the document data for the
486 job and the job becomes part of the Job History. The Printer object MAY also delete any number of the job and
487 document attributes. Since the job is no longer restartable, the Printer object MUST remove the 'job-restartable'
488 value from the job's "job-state-reasons" attribute, if present. If the implementation supports the Document object, it
489 SHOULD retain at least the "document-state" and "document-state-reasons" attributes on the Document object
490 during the Job History phase which can be queried using the Get-Document-Attributes and Get-Documents
491 operations.

492 **Job Removal:** After the job has remained in the Job History for an implementation-defined time, such as when the
493 number of jobs exceeds a fixed number or after a fixed time period (which MAY be zero seconds), the IPP Printer
494 removes the Job and Document objects from the system.

495 Using the Get-Jobs/Get-Documents operation and supplying the 'not-completed' value for the "which-jobs" operation
496 attribute, a client is requesting jobs/documents in the Job/Document Not Completed phase. Using the Get-Jobs/Get-
497 Documents operation and supplying the 'completed' value for the "which-jobs" operation attribute, a client is
498 requesting jobs/documents in the Job Retention and Job History phases. Using the Get-Job-Attributes/Get-
499 Document-Attributes operation, a client is requesting a job/documents in any phase except Job Removal. After Job
500 Removal, the Get-Job-Attributes/Get-Documents and Get-Jobs/Get-Documents operations no longer are
501 capable of returning any information about a job/document.

502 NOTE: The semantics of this attribute or the set of valid values may be different for different document formats.

503 **6.4 job-state-reasons (1setOf type2 keyword) <Job>**

504 **6.5 document-state-reasons (1setOf type2 keyword) <Document>**

505 This is REQUIRED "job-state-reasons" and the REQUIRED "document-state-reasons" attributes provides additional
506 information about the job's and each document's current state, i.e., information that augments the value of the job's
507 "job-state" attribute and each Document's "document-state" attribute, respectively. The Printer SHOULD support the
508 same values for both the "job-state-reasons" and the "document-state-reasons" attribute for those attributes that are
509 defined for both as indicated in the "Job" and "Doc" columns in Table 8.

510 These values MAY be used with any job or document state or states for which the reason makes sense. Some of
511 these value definitions indicate conformance requirements; the rest are OPTIONAL. Furthermore, when
512 implemented, the Printer MUST return these values when the reason applies and MUST NOT return them when the
513 reason no longer applies whether the value of the Job's "job-state" attribute or the Document's "document-state"
514 attribute changed or not. When the Job or Document does not have any reasons for being in its current state, the
515 value of the Job's "job-state-reasons" attribute or Document's "document-state-reasons" attribute MUST be 'none'.

516 Note: While values cannot be added to the "job-state" or "document-state" attributes without impacting deployed
517 clients that take actions upon receiving "job-state" or "document-state" values, it is the intent that additional "job-
518 state-reasons" and "document-state-reasons" values can be defined and registered without impacting such deployed
519 clients. In other words, the "job-state-reasons" and the "document-state-reasons" attributes is-are intended to be
520 extensible.

521 The following standard keyword values are defined for the "job-state-reasons" and/or "document-state-reasons"
522 attributes as shown in Table 8. In Table 8 the keywords are listed in alphabetic order (ignoring the "[job-]" prefix),
523 while in their descriptions following, they are listed in the most likely order of occurrence.

524 When the Document object is supported, the Printer implementation SHOULD still support the corresponding Job
 525 level "job-state-reasons", so that clients that do not support the Document object will receive the same information.
 526 Also it is usually more convenient for the client to obtain just the Job level status.

527 **Notation:**

528 [job-] indicates a state reason keyword value that shouldn't have had a "job-" prefix in its name in [RFC2911], so
 529 that the same value could also apply at the Document level as a "document-state-reasons" attribute value.
 530 Note: For the PWG Semantic Model, the "job-" prefix will be dropped. For purposes of sorting in Table 8, the
 531 "[job-]" prefix is ignored, since the PWG Semantic Model name is proposed without the prefix.

532
 533 ISSUE 07: Should we sort the attributes values including the [job-]? Currently the "job-" is ignored in the sort
 534 for attribute values.

535
 536 ISSUE 08: How will we register these attribute values with IANA, since they will be registered for IPP use,
 537 with the "job-" prefix. Do we add the ones without "job-" as aliases to the IANA registry for as is done for
 538 charset registrations?

540
 541 "-" indicates that the Job or Document value is *not* defined.
 542

543 **Table 8 - "job-state-reasons" and "document-state-reasons" attribute values**

IPP Job Description / Document Description attribute name	IPP Attribute Syntax plus Values	Job	Doc	Printer conformance	Reference
job-state-reasons	1setOf type2 keyword	y	⁻²⁰	MUST	[RFC2911] §4.3.8
document-state-reasons	1setOf type2 keyword	-	y	MUST	[this spec] §6.5
	'aborted-by-system'	y	y	MAY	[RFC2911] §4.3.8
	'[job-]canceled-at-device'	y	y	MAY	[RFC2911] §4.3.8
	'[job-]canceled-by-operator'	y	y	MAY	[RFC2911] §4.3.8
	'[job-]canceled-by-user'	y	y	MAY	[RFC2911] §4.3.8
	'[job-]completed-successfully'	y	y	MAY	[RFC2911] §4.3.8
	'[job-]completed-with-errors'	y	y	MAY	[RFC2911] §4.3.8
	'[job-]completed-with-warnings'	y	y	MAY	[RFC2911] §4.3.8
	'compression-error'	y	y	MAY	[RFC2911] §4.3.8
	'document-access-error'	y	y	MAY	[RFC2911] §4.3.8
	'document-format-error'	y	y	MAY	[RFC2911] §4.3.8
	'[job-]incoming'	y	y	MAY	[RFC2911] §4.3.8
	'[job-]interpreting'	y	y	MAY	[RFC2911] §4.3.8
	'job-data-insufficient'	y	-	MAY	[RFC2911] §4.3.8
	'job-hold-until-specified'	y	-	MAY	[RFC2911] §4.3.8
	'job-queued'	y	-	MAY	[RFC2911] §4.3.8
	' <u>job-restartable</u> '	<u>y</u>	<u>-</u>	<u>MAY</u>	[RFC2911] §4.3.8
	'job-resuming'	y	-	MAY	[RFC2911] §4.3.8
	'job-suspended'	y	-	MAY	[adm-ops] §9.1
	'none'	y	y	MUST	[RFC2911] §4.3.8
	'[job-]outgoing'	y	y	MAY	[RFC2911] §4.3.8
	'printer-stopped'	y	-	MAY	[RFC2911] §4.3.8

²⁰ The Document Description attribute that corresponds to the "job-state-reasons" Job Description attribute is the (new) "document-state-reasons" attribute.

IPP Job Description / Document Description attribute name	IPP Attribute Syntax plus Values	Job	Doc	Printer conformance	Reference
	'printer-stopped-partly'	y	-	MAY	[RFC2911] §4.3.8
	' [job-] printing'	y	y	MAY	[RFC2911] §4.3.8
	'processing-to-stop-point'	y	-	MAY	[RFC2911] §4.3.8
	' queued-in-device '	y	y	MAY	[RFC2911] §4.3.8
	' [job-] queued-for-marker'	y	y	MAY	[RFC2911] §4.3.8
	'resources-are-not-ready'	y	y	MAY	[RFC2911] §4.3.8
	'resources-are-not-supported'	y	y	MAY	[prod-print] §6.1
	'service-off-line'	y	-	MAY	[RFC2911] §4.3.8
	'submission-interrupted'	y	y	MAY	[RFC2911] §4.3.8
	' [job-] transforming'	y	y	MAY	[RFC2911] §4.3.8
	'unsupported-compression'	y	y	MUST	[RFC2911] §4.3.8
	'unsupported-document-format'	y	y	MUST	[RFC2911] §4.3.8
	' [job-] warnings-detected'	y	y	MAY	[override] §7.1

544

545

546

547

548

For ease of understanding, the following value descriptions are presented in the order in which the reasons are likely to occur (if implemented), starting with the 'none' 'job-incoming' value. Note: The order is improved over that in [RFC2911]. The (JD), (J), and (D) notation is identical to the "Job" and "Doc" columns in Table 8 indicating whether the keyword is defined for the "job-state-reasons" and/or "document-state-reasons" attributes:

549

550

551

'none' (JD): There are no reasons for the job's or document's current state. This state reason is semantically equivalent to "job-state-reasons" or "document-state-reasons" attribute without any value and MUST be used when there is no other value, since the 1setOf attribute syntax requires at least one value.

552

553

554

555

'job-hold-until-specified' (J): The value of the job's "job-hold-until" attribute was specified with a time period that is still in the future. The job MUST NOT be a candidate for processing until this reason is removed and there are no other reasons to hold the job. This value SHOULD be supported if the "job-hold-until" Job Template attribute is supported.

556

557

558

559

560

561

562

563

564

565

'resources-are-not-supported' (JD): At least one of the resources needed by the job/document, such as media, fonts, resource objects, etc., is not supported on any of the physical printers for which the job/document is a candidate. This condition MAY be detected when the job/document is accepted, or subsequently while the job/document is pending or processing, depending on implementation. The job/document may (1) remain in its current state, (2) be moved to the 'pending-held' state, depending on implementation and/or job scheduling policy, or (3) scheduled normally, but the Printer is put into the 'stopped' state when the job/document is attempted to be processed on the Printer. This value is intended for use with an implementation that supports the "user-defined-values-supported" Printer attribute (see [prod-print] section 6.1) which allows a job to be accepted with an unsupported 'name' value.

566

567

568

569

570

571

'resources-are-not-ready' (JD): At least one of the resources needed by the job/document, such as media, fonts, resource objects, etc., is not ready on any of the physical printer's for which the job/document is a candidate. This condition MAY be detected when the job/document is accepted, or subsequently while the job/document is pending or processing, depending on implementation. The job/document may remain in its current state or be moved to the 'pending-held' state, depending on implementation and/or job/document scheduling policy.

572

573

574

'**[job-]**incoming' (JD): Either (1) the Printer has accepted the Create-Job operation and is expecting additional Send-Document and/or Send-URI operations or (2) the Printer is retrieving/accepting document data as a result of a Print-Job, Print-URI, Send-Document or Send-URI operation.

575

576

577

'job-data-insufficient' (J): The Create-Job operation has been accepted by the Printer, but the Printer is expecting additional document data before it can move the job into the 'processing' state. If a Printer starts processing before it has received all data, the Printer removes the 'job-data-insufficient'

- 578 reason, but the 'job-incoming' remains. If a Printer starts processing after it has received all data, the
579 Printer removes the 'job-data-insufficient' reason and the 'job-incoming' at the same time.
- 580 'unsupported-compression' **(JD)**: The job/document was aborted by the system because the Printer
581 determined while attempting to decompress the document-data's that the compression is actually not
582 among those supported by the Printer. This value MUST be supported, since "compressions is a
583 REQUIRED operation attribute.
- 584 'compression-error' **(JD)**: The job/document was aborted by the system because the Printer encountered an
585 error in the document-data while decompressing it. If the Printer posts this reason, the document-
586 data has already passed any tests that would have led to the 'unsupported-compression' job-state-
587 reason/document-state-reason.
- 588 'document-access-error' **(JD)**: After accepting a Print-URI or Send-URI request, the Printer could not access
589 one or more documents passed by reference. This reason is intended to cover any file access
590 problem, including file does not exist and access denied because of an access control problem. The
591 Printer MAY also indicate the document access error using the "job-document-access-errors" Job
592 Description attribute (see the description of "job-document-access-errors" above). Whether the
593 Printer aborts the job/document and moves the job/document to the 'aborted' job state or prints all
594 documents that are accessible and moves the job/document to the 'completed' job/document state
595 and adds the 'completed-with-errors' value in the job's "job-state-reasons" or document's "document-
596 state-reasons" attribute depends on implementation and/or site policy. This value SHOULD be
597 supported if the Print-URI or Send-URI operations are supported.
- 598 'unsupported-document-format' **(JD)**: The job/document was aborted by the system because the document-
599 data's document-format is not among those supported by the Printer. If the client specifies the
600 document-format as 'application/octet-stream', the printer MAY abort the job/document and post this
601 reason even though the format is a member of the "document-format-supported" printer attribute, but
602 not among the auto-sensed document-formats. This value MUST be supported, since "document-
603 format" is a REQUIRED operation attribute.
- 604 'document-format-error' **(JD)**: The job/document was aborted by the system because the Printer encountered
605 an error in the document-data while processing it. If the Printer posts this reason, the document-data
606 has already passed any tests that would have led to the 'unsupported-document-format' job-state-
607 reason/document-state-reason.
- 608 'submission-interrupted' **(JD)**: The job or document was not completely submitted for some unforeseen
609 reason, such as: (1) the Printer has crashed before the job was closed by the client, (2) the Printer or
610 the document transfer method has crashed in some non-recoverable way before the document data
611 was entirely transferred to the Printer, (3) the client crashed or failed to close the job before the time-
612 out period. See the description of the "multiple-operation-time-out" Printer attribute in [RFC2911]
613 Section 4.4.3-1.
- 614 '**job-**outgoing' **(JD)**: The Printer is transmitting the job/document to the output device.
- 615 'job-queued' **(J)**: Job is in the 'processing' state, but more specifically, the Printer has queued the document
616 data.
- 617 '**job-**transforming' **(JD)**: Job/document is in the 'processing' state, but more specifically, the Printer is
618 interpreting document data and producing another electronic representation.
- 619 '**job-**interpreting' **(JD)**: Job/document is in the 'processing' state, but more specifically, the Printer is
620 interpreting the document data.
- 621 '**job-**queued-for-marker' **(JD)**: Job/document is in any of the 'pending-held', 'pending', or 'processing' states,
622 but more specifically, the Printer has completed enough processing of the document to be able to
623 start marking and the job/document is waiting for the marker. Systems that require human
624 intervention to release jobs using the Release-Job operation, put the job into the 'pending-held' job
625 state. Systems that automatically select a job to use the marker put the job into the 'pending' job
626 state or keep the job in the 'processing' job state while waiting for the marker, depending on

627 | implementation. All implementations put the job/document into (or back into) the 'processing' state
628 | when marking does begin.

629 | **'job-**printing' (JD): The output device is marking media. This value is useful for Printers which spend a great
630 | deal of time processing (1) when no marking is happening and then want to show that marking is
631 | now happening or (2) when the job/document is in the process of being canceled or aborted while
632 | the job/document remains in the 'processing' state, but the marking has not yet stopped so that
633 | impression or sheet counts are still increasing for the job/document.

634 | 'printer-stopped-partly' (J): The value of the Printer's "printer-state-reasons" attribute contains the value
635 | 'stopped-partly'.

636 | 'printer-stopped' (J): The value of the Printer's "printer-state" attribute is 'stopped'.

637 | 'job-suspended' (J): The job has been suspended while processing using the Suspend-Current-Job operation
638 | and other jobs can be processed on the Printer. The Job can be resumed using the Resume-Job
639 | operation which removes this value. Note: Documents cannot be suspended and there is no
640 | Suspend-Current-Document operation.

641 | **'job-**canceled-by-user' (JD): The job/document was canceled by the owner of the job using the Cancel-
642 | Job/Cancel-Document request, i.e., by a user whose authenticated identity is the same as the value
643 | of the originating user that created the Job object, or by some other authorized end-user, such as a
644 | member of the job owner's security group. This 'job-canceled' value SHOULD be supported. The
645 | 'canceled-by-user' value SHOULD be supported for the "document-state-reasons" attributes if the
646 | Cancel-Document operation is supported.

647 | **'job-**canceled-by-operator' (JD): The job/document was canceled by the operator using the Cancel-
648 | Job/Cancel-Document request, i.e., by a user who has been authenticated as having operator
649 | privileges (whether local or remote). If the security policy is to allow anyone to cancel anyone's
650 | job/document, then these values may be used when the job/document is canceled by other than
651 | the owner of the job. For such a security policy, in effect, everyone is an operator as far as canceling
652 | jobs/documents is concerned. These values SHOULD be supported if the implementation permits
653 | canceling by other than the owner of the job.

654 | **'job-**canceled-at-device' (JD): The job/document was canceled by an unidentified local user, i.e., a user at a
655 | console at the device. This value SHOULD be supported if the implementation supports canceling
656 | jobs/documents at the console.

657 | 'aborted-by-system' (JD): The job/document (1) is in the process of being aborted, (2) has been aborted by
658 | the system and placed in the 'aborted' state, or (3) has been aborted by the system and placed in the
659 | 'pending-held' state, so that a user or operator can manually try the job/document again. This value
660 | SHOULD be supported.

661 | 'processing-to-stop-point' (J): The requester has issued a Cancel-Job/Cancel-Document operation or the
662 | Printer object has aborted the job/document, but is still performing some actions on the job/document
663 | until a specified stop point occurs or job/document termination/cleanup is completed.
664 | If the implementation requires some measurable time to cancel the job/document in the 'processing'
665 | or 'processing-stopped' job/document states, the IPP object MUST use this value to indicate that the
666 | Printer object is still performing some actions on the job/document while the job/document remains in
667 | the 'processing' or 'processing-stopped' state. After all the job's/document's job/document
668 | description attributes have stopped incrementing, the Printer object moves the job/document from
669 | the 'processing' state to the 'canceled' or 'aborted' job/document states.

670 | 'service-off-line' (J): The Printer is off-line and accepting no jobs. All 'pending' jobs are put into the 'pending-
671 | held' state. This situation could be true if the service's or document transform's input is impaired or
672 | broken.

673 | **'job-**warnings-detected' (JD): If the Printer supports these values, the Printer MUST add the value # to "job-
674 | state-reasons" / "document-state-reasons" when it generates the first warning message. That is, a

675 single occurrence of this value is present in the "job-state-reasons" / "document-state-reasons" if the
 676 Printer has generated one or more warnings.

677 **'job-completed-successfully' (JD)**: The job/document completed successfully. There were no warnings or
 678 errors in printing. This value SHOULD be supported.

679 **'job-completed-with-warnings' (JD)**: The job/document completed with warnings. This value SHOULD be
 680 supported if the implementation detects warnings.

681 **'job-completed-with-errors' (JD)**: The job/document completed with errors (and possibly warnings too) .
 682 This value SHOULD be supported if the implementation detects errors.

683 **'job-restartable' (J)**: This job is retained (see the description of "job-state" above, specifically "Partitioning of
 684 Job States") and is currently able to be restarted using the Restart-Job operation (see [RFC2911]
 685 Section 3.3.7). If 'job-restartable' is a value of the job's "job-state-reasons" attribute, then the IPP
 686 object MUST accept a Restart-Job operation for that job. This value SHOULD be supported if the
 687 Restart-Job operation is supported.

688 **'queued-in-device' (JD)**: The job/document has been forwarded to a device or print system that is unable to
 689 send back status. The Printer sets the job's/document's "job-state-" / "document-state" attribute to
 690 'completed' and adds the 'queued-in-device' value to the job's/document's "job-state-reasons" /
 691 "document-state-reasons" attribute to indicate that the Printer has no additional information about the
 692 job/document and never will have any better information. See the description of the "job-state" /
 693 "document-state" attribute above, specifically the portion on "Forwarding Servers".

694 NOTE: The semantics of this attribute or the set of valid values may be different for different document formats.

695 **7 Printer Description attributes**

696 ~~TBD -- one to list the Document Template keyword attribute names supported.~~
 697 This section lists all of the Printer attributes defined in other IPP documents. Printer attributes are divided into three
 698 disjoint groups:
 699

<u>Job Template attributes (JT)</u>	<u>These Printer attributes are related directly to the "xxx" Job Template attributes that a client can supply in a Job Creation request as follows:</u> 1. <u>"xxx-supported" indicate the supported values</u> 2. <u>"xxx-default" indicate the values that will be used if the client and the PDL omit the attribute.</u> 3. <u>"xxx-ready" indicate the supported values that are available without human intervention, for those few attributes that require human intervention, such as "media" and possibly "finishing".</u>
<u>Printer Description attributes (PD)</u>	<u>These Printer attributes describe the Printer, such as "printer-name" and "printer-location". Some of them are "xxx-supported" and "xxx-default" for Operation attributes that the client can supply in a Job Creation request.</u>
<u>neither (-)</u>	<u>These Printer attributes describe supported and defaults for member attributes of collection Job Template attributes.</u>

700 In a Get-Printer-Attributes request, a client can request all of the Printer attributes in the Job Template (JT) or Printer
 701 Description (PD) groups by supplying the 'job-template' or 'printer-description' group name, respectively. The column
 702 labeled "attribute syntax" indicates the attribute syntax (see [RFC2911] section 4.1). Many "xxx-default" and "xxx-
 703 supported" attributes have the 'collection' syntax which consists of a number of member attributes. These member
 704 attributes are not listed in this table when they are the same as the corresponding "xxx" attribute in Table 5. Only
 705 those few Printer attribute collection attributes that do not have a corresponding Job Template attributes show the
 706 member attributes in this table. The column labeled "Grp" indicates to which group the attribute belongs. The
 707 column labeled "Printer Conf." indicates the IPP/1.1 Printer conformance requirements for supporting the attribute.
 708 Those attributes labeled as "MAY" may have conditional requirements that require their support, if the Printer
 709

710 supports a related attribute, operation, or feature. For example, all Job Template attributes are OPTIONAL for a
 711 Printer to support. However, if a Printer supports Job Template attribute “xxx”, then it MUST also support the
 712 corresponding “xxx-default” and “xxx-supported” attributes. Similarly, if Event Notification is supported, then some of
 713 the attributes indicated as “MAY” in this table become MUST. The Reference and Section columns list the IETF or
 714 IEEE-ISTO specification which defines the semantics of the attribute.

715 **ISSUE 09: What other Printer Description attributes are needed, if any?**

716

Table 9 - Printer attributes (Job Template and Printer Description)

Printer attribute name (Job Template & Printer Description)	Attribute Syntax	Grp	Printer Conf.	Reference
charset-configured	charset	PD	MUST	[RFC2911] §4.4.17
charset-supported	1setOf charset	PD	MUST	[RFC2911] §4.4.18
color-supported	boolean	PD	MAY	[RFC2911] §4.4.26
compression-supported	type3 keyword	PD	MUST	[RFC2911] §4.4.32
copies-default	integer(1:MAX)	JT	MAY	[RFC2911] §4.2.5
copies-supported	rangeOfInteger(1:MAX)	JT	MAY	[RFC2911] §4.2.5
cover-back-default	collection	JT	MAY	[prod-print] §3.1.3
cover-back-supported	1setOf type2 keyword	JT	MAY	[prod-print] §3.1.4
cover-front-default	collection	JT	MAY	[prod-print] §3.1.3
cover-front-supported	1setOf type2 keyword	JT	MAY	[prod-print] §3.1.4
cover-type-supported	1setOf type2 keyword	-	MAY	[prod-print] §3.1.2.1
document-format-default	mimeMediaType	PD	MUST	[RFC2911] §4.4.21
document-format-supported	1setOf mimeMediaType	PD	MUST	[RFC2911] §4.4.22
document-format-varying-attributes	1setOf type2 keyword	PD	MAY	[set-ops] §6.3
document-overrides-supported	1setOf type2 keyword		MAY	[override] §5.1.14
finishings-col-default	collection	JT	MAY	[prod-print] §3.2.3
finishings-col-ready	1setOf collection	JT	MAY	[prod-print] §3.2.4
finishings-col-supported	1setOf type2 keyword	JT	MAY	[prod-print] §3.2.5
finishings-default	1setOf type2 enum	JT	MAY	[RFC2911] §4.2.6
finishings-ready	1setOf type2 enum	JT	MAY	[RFC2911] §4.2.6
finishings-supported	1setOf type2 enum	JT	MAY	[RFC2911] §4.2.6
finishing-template-supported	1setOf name(MAX)	-	MAY	[prod-print] §3.2.1.1
force-front-side-default	1setOf integer(1:MAX)	JT	MAY	[prod-print] §3.3
force-front-side-supported	rangeOfInteger(1:MAX)	JT	MAY	[prod-print] §3.3
generated-natural-language-supported	1setOf naturalLanguage	PD	MUST	[RFC2911] §4.4.20
imposition-template-default	type3 keyword name(MAX)	-	MAY	[prod-print] §3.4
imposition-template-supported	1setOf (type3 keyword name(MAX))	-	MAY	[prod-print] §3.4
insert-after-page-number-supported	rangeOfInteger(0:MAX)	-	MAY	[prod-print] §3.5.1.1
insert-count-supported	rangeOfInteger(0:MAX)	-	MAY	[prod-print] §3.5.2.1
insert-sheet-default	1setOf collection	JT	MAY	[prod-print] §3.5.4
insert-sheet-supported	1setOf type2 keyword	JT	MAY	[prod-print] §3.5.5
ippget-event-life	integer(15:MAX)	PD	MAY	[get-method] §8.1
ipp-versions-supported	1setOf type2 keyword	PD	MUST	[RFC2911] §4.4.20
job-account-id-default	name(MAX)	JT	MAY	[prod-print] §3.6
job-account-id-supported	boolean	JT	MAY	[prod-print] §3.6
job-accounting-output-bin-default	type3 keyword name(MAX)	-	MAY	[prod-print] §3.8.3.1
job-accounting-output-bin-	1setOf (type3 keyword	-	MAY	[prod-print] §3.8.3.2

<u>Printer attribute name</u> (Job Template & Printer Description)	<u>Attribute Syntax</u>	<u>Grp</u>	<u>Printer Conf.</u>	<u>Reference</u>
<u>supported</u>	<u>name(MAX)</u>			
<u>job-accounting-sheets-default</u>	<u>collection</u>	<u>JT</u>	<u>MAY</u>	<u>[prod-print] §3.8.4</u>
<u>job-accounting-sheets-supported</u>	<u>1setOf type2 keyword</u>	<u>JT</u>	<u>MAY</u>	<u>[prod-print] §3.8.5</u>
<u>job-accounting-sheets-type-supported</u>	<u>1setOf (type3 keyword name(MAX))</u>	<u>-</u>	<u>MAY</u>	<u>[prod-print] §3.8.1.1</u>
<u>job-accounting-user-id-default</u>	<u>name(MAX)</u>	<u>JT</u>	<u>MAY</u>	<u>[prod-print] §3.7</u>
<u>job-accounting-user-id-supported</u>	<u>boolean</u>	<u>JT</u>	<u>MAY</u>	<u>[prod-print] §3.7</u>
<u>job-error-sheet-default</u>	<u>collection</u>	<u>JT</u>	<u>MAY</u>	<u>[prod-print] §3.7</u>
<u>job-error-sheet-supported</u>	<u>1setOf type2 keyword</u>	<u>JT</u>	<u>MAY</u>	<u>[prod-print] §3.9.5</u>
<u>job-error-sheet-type-supported</u>	<u>1setOf (type3 keyword name(MAX))</u>	<u>-</u>	<u>MAY</u>	<u>[prod-print] §3.9.1.1</u>
<u>job-error-sheet-when-supported</u>	<u>1setOf type2 keyword</u>	<u>-</u>	<u>MAY</u>	<u>[prod-print] §3.9.2.1</u>
<u>job-hold-until-default</u>	<u>type3 keyword name(MAX)</u>	<u>JT</u>	<u>MAY</u>	<u>[RFC2911] §4.2.2</u>
<u>job-hold-until-supported</u>	<u>1setOf (type3 keyword name(MAX))</u>	<u>JT</u>	<u>MAY</u>	<u>[RFC2911] §4.2.2</u>
<u>job-impressions-supported</u>	<u>rangeOfInteger(0:MAX)</u>	<u>PD</u>	<u>MAY</u>	<u>[RFC2911] §4.4.34</u>
<u>job-k-octets-supported</u>	<u>rangeOfInteger(0:MAX)</u>	<u>PD</u>	<u>MAY</u>	<u>[RFC2911] §4.4.33</u>
<u>job-media-sheets-supported</u>	<u>rangeOfInteger(0:MAX)</u>	<u>PD</u>	<u>MAY</u>	<u>[RFC2911] §4.4.35</u>
<u>job-message-to-operator-default</u>	<u>text(MAX)</u>	<u>JT</u>	<u>MAY</u>	<u>[prod-print] §3.12</u>
<u>job-message-to-operator-supported</u>	<u>boolean</u>	<u>JT</u>	<u>MAY</u>	<u>[prod-print] §3.12</u>
<u>job-priority-default</u>	<u>integer(1:100)</u>	<u>JT</u>	<u>MAY</u>	<u>[RFC2911] §4.2.1</u>
<u>job-priority-supported</u>	<u>1setOf integer(1:100)</u>	<u>JT</u>	<u>MAY</u>	<u>[RFC2911] §4.2.1</u>
<u>job-settable-attributes-supported</u>	<u>1setOf type2 keyword</u>	<u>PD</u>	<u>MAY</u>	<u>[set-ops] §6.2</u>
<u>job-sheet-message-default</u>	<u>text(MAX)</u>		<u>MAY</u>	<u>[prod-print] §3.12</u>
<u>job-sheet-message-supported</u>	<u>boolean</u>		<u>MAY</u>	<u>[prod-print] §3.12</u>
<u>job-sheets-col-default</u>	<u>collection</u>	<u>JT</u>	<u>MAY</u>	<u>[prod-print] §3.11.3</u>
<u>job-sheets-col-supported</u>	<u>1setOf type2 keyword</u>	<u>JT</u>	<u>MAY</u>	<u>[prod-print] §3.11.4</u>
<u>job-sheets-default</u>	<u>type3 keyword name(MAX)</u>	<u>JT</u>	<u>MAY</u>	<u>[RFC2911] §4.2.3</u>
<u>job-sheets-supported</u>	<u>1setOf (type3 keyword name(MAX))</u>	<u>JT</u>	<u>MAY</u>	<u>[RFC2911] §4.2.3</u>
<u>max-stitching-locations-supported</u>	<u>integer(1:MAX)</u>	<u>PD</u>	<u>MAY</u>	<u>[prod-print] §5.2</u>
<u>media-back-coating-supported</u>	<u>1setOf (type3 keyword name(MAX))</u>	<u>-</u>	<u>MAY</u>	<u>[prod-print] §3.13.10.2</u>
<u>media-col-default</u>	<u>collection</u>	<u>JT</u>	<u>MAY</u>	<u>[prod-print] §3.13.12</u>
<u>media-color-supported</u>	<u>1setOf type2 keyword</u>	<u>-</u>	<u>MAY</u>	<u>[prod-print] §3.13.4.1</u>
<u>media-col-ready</u>	<u>1setOf collection</u>	<u>JT</u>	<u>MAY</u>	<u>[prod-print] §3.13.13</u>
<u>media-col-supported</u>	<u>1setOf type2 keyword</u>	<u>JT</u>	<u>MAY</u>	<u>[prod-print] §3.13.14</u>
<u>media-default</u>	<u>type3 keyword name(MAX)</u>	<u>JT</u>	<u>MAY</u>	<u>[RFC2911] §4.2.11</u>
<u>media-front-coating-supported</u>	<u>1setOf (type3 keyword name(MAX))</u>	<u>-</u>	<u>MAY</u>	<u>[prod-print] §3.13.10.1</u>
<u>media-hole-count-supported</u>	<u>1setOf rangeOfInteger(0:MAX)</u>	<u>-</u>	<u>MAY</u>	<u>[prod-print] §3.13.6.1</u>
<u>media-info-supported</u>	<u>boolean</u>	<u>-</u>	<u>MAY</u>	<u>[prod-print] §3.13.3.1</u>
<u>media-input-tray-check-default</u>	<u>type3 keyword name(MAX)</u>	<u>JT</u>	<u>MAY</u>	<u>[prod-print] §3.14</u>
<u>media-input-tray-check-supported</u>	<u>1setOf (type3 keyword name(MAX))</u>	<u>JT</u>	<u>MAY</u>	<u>[prod-print] §3.14</u>
<u>media-key-supported</u>	<u>1setOf (type3 keyword name(MAX))</u>	<u>-</u>	<u>MAY</u>	<u>[prod-print] §3.13.1.1</u>
<u>media-order-count-supported</u>	<u>1setOf rangeOfInteger(1:MAX)</u>	<u>-</u>	<u>MAY</u>	<u>[prod-print] §3.13.7.1</u>
<u>media-pre-printed-supported</u>	<u>1setOf (type3 keyword name(MAX))</u>	<u>-</u>	<u>MAY</u>	<u>[prod-print] §3.13.5.1</u>

<u>Printer attribute name</u> (Job Template & Printer Description)	<u>Attribute Syntax</u>	<u>Grp</u>	<u>Printer Conf.</u>	<u>Reference</u>
<u>media-ready</u>	1setOf (type3 keyword name(MAX))	JT	MAY	[RFC2911] §4.2.11
<u>media-recycled-supported</u>	1setOf (type3 keyword name(MAX))	-	MAY	[prod-print] §3.13.11.1
<u>media-size-supported</u>	1setOf collection	-	MAY	[prod-print] §3.13.8.3
<u>media-supported</u>	1setOf (type3 keyword name(MAX))	JT	MAY	[RFC2911] §4.2.11
<u>media-type-supported</u>	1setOf (type3 keyword name(MAX))	-	MAY	[prod-print] §3.13.2.1
<u>media-weight-metric-supported</u>	1setOf rangeOfInteger(1:MAX)	-	MAY	[prod-print] §3.13.9.1
<u>multiple-document-handling-default</u>	type2 keyword	JT	MAY	[RFC2911] §4.2.4
<u>multiple-document-handling-supported</u>	1setOf type2 keyword	JT	MAY	[RFC2911] §4.2.4
<u>multiple-document-jobs-supported</u>	boolean	PD	MAY	[RFC2911] §4.4.16
<u>multiple-operation-time-out</u>	integer(1:MAX)	PD	MAY	[RFC2911] §4.4.31
<u>natural-language-configured</u>	naturalLanguage	PD	MUST	[RFC2911] §4.4.19
<u>notify-attributes-supported</u>	1setOf type2 keyword	PD	MAY	[ntfy] §5.3.4
<u>notify-events-default</u>	1setOf type2 keyword	PD	MAY	[ntfy] §5.3.3
<u>notify-events-supported</u>	1setOf type2 keyword	PD	MAY	[ntfy] §5.3.3
<u>notify-lease-duration-default</u>	integer(0:67108863)	PD	MAY	[ntfy] §5.3.8
<u>notify-lease-duration-supported</u>	1setOf (integer(0: 67108863) rangeOfInteger(0:67108863))	PD	MAY	[ntfy] §5.3.8
<u>notify-lease-expiration-time</u>	integer(0:MAX)	PD	MAY	[ntfy] §5.4.3
<u>notify-max-events-supported</u>	integer(2:MAX)	PD	MAY	[ntfy] §5.3.3
<u>notify-pull-method-supported</u>	1setOf type2 keyword	PD	MAY	[ntfy] §5.3.2
<u>notify-schemes-supported</u>	1setOf uriScheme	PD	MAY	[ntfy] §5.3.1
<u>number-up-default</u>	integer(1:MAX)	JT	MAY	[RFC2911] §4.2.9
<u>number-up-supported</u>	1setOf (integer(1:MAX) rangeOfInteger(1:MAX))	JT	MAY	[RFC2911] §4.2.9
<u>operations-supported</u>	1setOf type2 enum	PD	MUST	[RFC2911] §4.4.15
<u>orientation-requested-default</u>	type2 enum	JT	MAY	[RFC2911] §4.2.10
<u>orientation-requested-supported</u>	1setOf type2 enum	JT	MAY	[RFC2911] §4.2.10
<u>output-bin-default</u>	type2 keyword name(MAX)	JT	MAY	[output-bin] §2.1
<u>output-bin-supported</u>	1setOf (type2 keyword name(MAX))	JT	MAY	[output-bin] §2.1
<u>page-delivery-default</u>	type2 keyword	JT	MAY	[prod-print] §3.15
<u>page-delivery-supported</u>	1setOf type2 keyword	JT	MAY	[prod-print] §3.15
<u>page-order-received-default</u>	type2 keyword	JT	MAY	[prod-print] §3.16
<u>page-order-received-supported</u>	1setOf type2 keyword	JT	MAY	[prod-print] §3.16
<u>page-overrides-supported</u>	1setOf type2 keyword	PD	MAY	[override] §5.2.9
<u>page-ranges-supported</u>	boolean	JT	MAY	[RFC2911] §4.2.7
<u>pages-per-minute</u>	integer(0:MAX)	PD	MAY	[RFC2911] §4.4.36
<u>pages-per-minute-color</u>	integer(0:MAX)	PD	MAY	[RFC2911] §4.4.37
<u>pages-per-subset-supported</u>	boolean	PD	MAY	[override] §5.3.2
<u>parent-printers-supported</u>	1setOf uri	PD	MAY	[ops-set2] §7.2
<u>pdl-override-supported</u>	type2 keyword	PD	MUST	[RFC2911] §4.4.28
<u>presentation-direction-number-up-default</u>	type2 keyword	JT	MAY	[prod-print] §3.17
<u>presentation-direction-number-up-supported</u>	1setOf type2 keyword	JT	MAY	[prod-print] §3.17

<u>Printer attribute name</u> (Job Template & Printer Description)	<u>Attribute Syntax</u>	<u>Grp</u>	<u>Printer Conf.</u>	<u>Reference</u>
printer-current-time	dateTime	PD	MAY	[RFC2911] §4.4.30
printer-driver-installer	uri	PD	MAY	[RFC2911] §4.4.8
printer-info	text(127)	PD	MAY	[RFC2911] §4.4.6
printer-is-accepting-jobs	boolean	PD	MUST	[RFC2911] §4.4.23
printer-location	text(127)	PD	MAY	[RFC2911] §4.4.5
printer-make-and-model	text(127)	PD	MAY	[RFC2911] §4.4.9
printer-message-date-time	dateTime	PD	MAY	[set-ops] §6.5
printer-message-from-operator	text(127)	PD	MAY	[RFC2911] §4.4.25
printer-message-time	integer(MIN:MAX)	PD	MAY	[set-ops] §6.4
printer-more-info	uri	PD	MAY	[RFC2911] §4.4.7
printer-more-info-manufacturer	uri	PD	MAY	[RFC2911] §4.4.10
printer-name	name(127)	PD	MUST	[RFC2911] §4.4.4
printer-resolution-default	resolution	JT	MAY	[RFC2911] §4.2.12
printer-resolution-supported	1setOf resolution	JT	MAY	[RFC2911] §4.2.12
printer-settable-attributes-supported	1setOf type2 keyword	PD	MAY	[set-ops] §6.1
printer-state	type1 enum	PD	MUST	[RFC2911] §4.4.11
printer-state-change-date-time	dateTime	PD	MAY	[ntfy] §6.2
printer-state-change-time	integer(1:MAX)	PD	MAY	[ntfy] §6.1
printer-state-message	text(MAX)	PD	MAY	[RFC2911] §4.4.13
printer-state-reasons	1setOf type2 keyword	PD	MUST	[RFC2911] §4.4.12
printer-up-time	integer(1:MAX))	PD	MUST	[RFC2911] §4.4.29
printer-uri-supported	1setOf uri	PD	MUST	[RFC2911] §4.4.1
printer-xri-supported	1setOf collection	PD	MAY	[set-ops] §6.6
xri-uri	uri	PD	MUST	[set-ops] §6.6
xri-authentication	1setOf type2 keyword	PD	MUST	[set-ops] §6.6
xri-security	1setOf type2 keyword	PD	MUST	[set-ops] §6.6
print-quality-default	type2 enum	JT	MAY	[RFC2911] §4.2.13
print-quality-supported	1setOf type2 enum	JT	MAY	[RFC2911] §4.2.13
queued-job-count	integer(0:MAX)	PD	MUST	[RFC2911] §4.4.24
reference-uri-schemes-supported	1setOf uriScheme	PD	MAY	[RFC2911] §4.4.27
separator-sheets-default	collection	JT	MAY	[prod-print] §3.18.3
separator-sheets-supported	1setOf type2 keyword	JT	MAY	[prod-print] §3.18.4
separator-sheets-type-supported	1setOf (type3 keyword name(MAX))	-	MAY	[prod-print] §3.18.1.1
sheet-collate-default	type2 keyword	JT	MAY	[job-prog] §3.1
sheet-collate-supported	1setOf type2 keyword	JT	MAY	[job-prog] §3.1
sides-default	type2 keyword	JT	MAY	[RFC2911] §4.2.8
sides-supported	1setOf type2 keyword	JT	MAY	[RFC2911] §4.2.8
stitching-locations-supported	1setOf (integer(0:MAX) rangeOfInteger(0:MAX))	-	MAY	[prod-print] §3.2.2.3.1
stitching-offset-supported	1setOf (integer (0:MAX) rangeOfInteger(0:MAX))	-	MAY	[prod-print] §3.2.2.2.1
stitching-reference-edge-supported	1setOf type2 keyword		MAY	[prod-print] §3.2.2.1.1
subordinate-printers-supported	1setOf uri	PD	MAY	[ops-set2] §7.1
uri-authentication-supported	1setOf type2 keyword	PD	MUST	[RFC2911] §4.4.2
uri-security-supported	1setOf type2 keyword	PD	MUST	[RFC2911] §4.4.3
user-defined-values-supported	1setOf type2 keyword	PD	MAY	[prod-print] §5.1
x-image-position-default	type2 keyword	JT	MAY	[prod-print] §3.19.2
x-image-position-supported	1setOf type2 keyword	JT	MAY	[prod-print] §3.19.2
x-image-shift-default	integer(MIN:MAX)	JT	MAY	[prod-print] §3.19.3

<u>Printer attribute name</u> (Job Template & Printer Description)	<u>Attribute Syntax</u>	<u>Grp</u>	<u>Printer Conf.</u>	<u>Reference</u>
x-image-shift-supported	rangeOfInteger(MIN:MAX)	JT	MAY	[prod-print] §3.19.3
xri-authentication-supported	1setOf type2 keyword	PD	MAY	[set-ops] §6.8
xri-security-supported	1setOf type2 keyword	PD	MAY	[set-ops] §6.9
xri-uri-scheme-supported	1setOf uriScheme	PD	MAY	[set-ops] §6.7
x-side1-image-shift-default	integer(MIN:MAX)	JT	MAY	[prod-print] §3.19.4
x-side1-image-shift-supported	rangeOfInteger(MIN:MAX)	JT	MAY	[prod-print] §3.19.4
x-side2-image-shift-default	integer(MIN:MAX)	JT	MAY	[prod-print] §3.19.5
x-side2-image-shift-supported	rangeOfInteger(MIN:MAX)	JT	MAY	[prod-print] §3.19.5
y-image-position-default	type2 keyword	JT	MAY	[prod-print] §3.19.6
y-image-position-supported	1setOf type2 keyword	JT	MAY	[prod-print] §3.19.6
y-image-shift-default	integer(MIN:MAX)	JT	MAY	[prod-print] §3.19.7
y-image-shift-supported	rangeOfInteger(MIN:MAX)	JT	MAY	[prod-print] §3.19.7
y-side1-image-shift-default	integer(MIN:MAX)	JT	MAY	[prod-print] §3.19.8
y-side1-image-shift-supported	rangeOfInteger(MIN:MAX)	JT	MAY	[prod-print] §3.19.8
y-side2-image-shift-default	integer(MIN:MAX)	JT	MAY	[prod-print] §3.19.9
y-side2-image-shift-supported	rangeOfInteger(MIN:MAX)	JT	MAY	[prod-print] §3.19.9

717

718 **8 New Values for Existing Printer Description Attributes**

719 This section contains those attributes for which additional values are added.

720 **8.1 operations-supported (1setOf type2 enum)**

721 The following “operation-id” values are added in order to support the new operations defined in this document:

722

Table 10 – Operation-id assignments

<u>Value</u>	<u>Operation Name</u>	<u>Reference</u>
0x0032	Cancel-Current-Document	[this-doc] §2
0x0033	Cancel-Document	[this-doc] §2
0x0034	Get-Document-Attributes	[this-doc] §2
0x0035	Get-Documents	[this-doc] §2
0x0036	Delete-Document	[this-doc] §2
0x0037	Set-Document-Attributes	[this-doc] §2
0x0038	Validate-Document	[this-doc] §2

723 **9 Conformance Requirements**

724 This section specifies the conformance requirements for Printers and clients.

725 **9.1 Printer conformance requirements**

726 In order to conform to this specification, a Printer:

- 727 1. MUST meet the conformance requirements for Printers specified in [RFC2911].
- 728 2. MUST support the Document operations that section 3 REQUIRES a Printer to support.

- 729 3. MUST support the operation attributes in the Send-Document operation and, if supported, the Send-URI
730 operation that section 4 REQUIRES a Printer to support.
- 731 4. MAY support any of the Document Template attributes in Document Creation operations as indicated in
732 section 5 and MUST NOT support them for contexts for where they are not defined as indicated in the Table
733 6 with an "n".
- 734 5. MUST support the Document Description attributes that section 6 REQUIRES a Printer to support.
- 735 6. MUST support the Printer attributes that section 7 REQUIRES a Printer to support.
- 736 7. MUST support the values of Printer Descriptions attribute that section 8 REQUIRES a Printer to support.

737 **9.2 Client conformance requirements**

738 In order to conform to this specification, a client:

- 739 1. MUST meet the conformance requirements for clients specified in [RFC2911]
- 740 2. MAY support any of the Document operations defined in section 3. **ISSUE 10: Or should the client be**
741 **REQUIRED to support some of the Document operations?**
- 742 3. MUST supply the operation attributes that section 4 REQUIRES a client to supply in operation requests.
- 743 4. MUST supply any Document Template attributes in the format that section 5 REQUIRES a client to supply in
744 Document Creation operations and MUST NOT support them for contexts for where they are not defined as
745 indicated in the Table 6 with an "n".
- 746 5. SHOULD support any of the Document Description attributes that section 6 REQUIRES a Printer to support.
- 747 6. MAY support any of the Printer attributes listed in section 7.
- 748 7. MAY support any of the values of the Printer Descriptions attributes in section 8.

749 **10 Normative References**

750 [adm-ops]

751 Kugler, C, Hastings, T., Lewis, H., "Internet Printing Protocol (IPP): Job and Printer Administrative
752 Operations", <draft-ietf-ipp-ops-set2-03.txt>, July 17, 2001.

753 [coll]

754 deBry, R., Hastings, T., Herriot, R., Ocke, K., and P. Zehler, "Internet Printing Protocol (IPP): The 'collection'
755 attribute syntax", <draft-ietf-ipp-collection-05.txt>, work in progress, July 17, 2001.

756 [finish]

757 Hastings, T., Fullman, D., "Internet Printing Protocol (IPP): "finishings" attribute values extension", IEEE-
758 ISTO 5100.1-2001, February 5, 2001, ftp://ftp.pwg.org/pub/pwg/standards/pwg5100.1.pdf

- 759 [\[get-method\]](#)
760 [Herriot, R., and T. Hastings, Kugler, C., and H. Lewis, "Internet Printing Protocol \(IPP\): The 'ippget' Delivery](#)
761 [Method for Event Notifications", <draft-ietf-ipp-notify-get-08.txt>, September 5, 2002.](#)
- 762 [job-prog]
763 Hastings, T., Lewis, H., and R. Bergman, "Internet Printing Protocol (IPP): Job Progress Attributes", <draft-
764 ietf-ipp-job-prog-03.txt> work in progress, July 17, 2001.
- 765 [\[not-srv\]](#)
766 [Hastings, T., Lewis, H., and Ira McDonald, "Distributed Notification Server", PWG IEEE-ISTO standard to be](#)
767 [started.](#)
- 768 [ntfy]
769 Herriot, R., Hastings, T., Shepherd, M., deBry, R., Isaacson, S., Martin, J., and R. Bergman, "Internet
770 Printing Protocol/1.1: Event Notifications and Subscriptions", <draft-ietf-ipp-not-spec-08.txt>, November 19,
771 2001.
- 772 [output-bin]
773 Hastings, T., and R. Bergman, "Internet Printing Protocol (IPP): output-bin attribute extension", IEEE-ISTO
774 5100.2-2001, February 7, 2001, <ftp://ftp.pwg.org/pub/pwg/standards/pwg5100.2.pdf>.
- 775 [\[override\]](#)
776 [Herriot, R., Ocke, K., "Internet Printing Protocol \(IPP\): Override Attributes for Documents and Pages", IEEE-](#)
777 [ISTO 5100.4-2001, February 7, 2001, <ftp://ftp.pwg.org/pub/pwg/standards/pwg5100.4.pdf>.](#)
- 778 [prod-print]
779 Ocke, K., Hastings, T., "Internet Printing Protocol (IPP): Production Printing Attributes - Set1", IEEE-ISTO
780 5100.3-2001, February 12, 2001, <ftp://ftp.pwg.org/pub/pwg/standards/pwg5100.3.pdf>.
- 781 [RFC2911]
782 R. deBry, T. Hastings, R. Herriot, S. Isaacson, P. Powell, "Internet Printing Protocol/1.1: Model and
783 Semantics", RFC 2911, September 2000.

784 11 Informative References

- 785 [\[RFC2565\]](#)
786 [Herriot, R., Butler, S., Moore, P., and R. Turner, "Internet Printing Protocol/1.0: Encoding and Transport",](#)
787 [RFC 2565, April 1999.](#)
- 788 [\[RFC2566\]](#)
789 [R. deBry, T. Hastings, R. Herriot, S. Isaacson, and P. Powell, "Internet Printing Protocol/1.0: Model and](#)
790 [Semantics", RFC 2566, April 1999.](#)
- 791 [\[RFC2567\]](#)
792 [Wright, D., "Design Goals for an Internet Printing Protocol", RFC 2567, April 1999.](#)

793 [\[RFC2568\]](#)
 794 [Zilles, S., "Rationale for the Structure and Model and Protocol for the Internet Printing Protocol", RFC 2568,](#)
 795 [April 1999.](#)

796 [\[RFC2569\]](#)
 797 [Herriot, R., Hastings, T., Jacobs, N., Martin, J., "Mapping between LPD and IPP Protocols", RFC 2569, April](#)
 798 [1999.](#)

799 [\[RFC2616\]](#)
 800 [R. Fielding, J. Gettys, J. Mogul, H. Frystyk, L. Masinter, P. Leach, T. Berners-Lee, "Hypertext Transfer](#)
 801 [Protocol - HTTP/1.1", RFC 2616, June 1999.](#)

802 [\[RFC3196\]](#)
 803 [Hastings, T., Manros, C., Zehler, P., Kugler, C., and H. Holst, "Internet Printing Protocol/1.1: Implementer's](#)
 804 [Guide", RFC 3196, November 2001.](#)

805 [\[RFC3239\]](#)
 806 [Kugler, C., Lewis, H. and T. Hastings, "Internet Printing Protocol \(IPP\): Requirements for Job, Printer, and](#)
 807 [Device Administrative Operations", RFC 3239, February 2002.](#)

808 **12 IANA Considerations**

809 [This section contains the registration information for IANA to add to the various IPP Registries according to the](#)
 810 [procedures defined in RFC 2911 \[RFC2911\] section 6 to cover the definitions in this document.](#)

811 [Note Replace the References below with the RFC number for the appropriate document, so that it accurately](#)
 812 [reflects the content of the information for the IANA Registry.](#)

813 **12.1 Attribute Registrations**

814 [The following table lists all the attributes defined in this document. These are to be registered according to the](#)
 815 [procedures in RFC 2911 \[RFC2911\] section 6.2.](#)

816 [Document Description attributes:](#)

Document Description attributes:	Reference:	Section
attributes-charset (charset)	[RFC2911]	4.3.19
attributes-natural-language (naturalLanguage)	[RFC2911]	4.3.20
compression (type3 keyword)	[RFC2911]	3.2.1.1
current-page-order (type2 keyword)	[prod-print]	4.1
date-time-at-completed (dateTime)	[RFC2911]	4.3.14.7
date-time-at-creation (dateTime)	[RFC2911]	4.3.14.5
date-time-at-processing (dateTime)	[RFC2911]	4.3.14.6
detailed-status-message (1setOf text (MAX))	[RFC2911]	4.3.10
document-access-errors (1setOf text (MAX))	[RFC2911]	4.3.11
document-format (documentFormat)	[RFC2911]	3.2.1.1
document-name (name (MAX))	[RFC2911]	3.2.1.1
document-natural-language (naturalLanguage)	[RFC2911]	3.2.1.1
document-number (integer(0:MAX))	[this spec]	6.1

832	<u>document-state (type1 enum)</u>	<u>[this spec]</u>	<u>6.3</u>
833	<u>document-state-reasons (lsetOf type2 keyword)</u>	<u>[this spec]</u>	<u>6.5!</u>
834	<u>impressions (integer(0:MAX))</u>	<u>[RFC2911]</u>	<u>4.3.17.2</u>
835	<u>impressions-completed (integer(0:MAX))</u>	<u>[RFC2911]</u>	<u>4.3.18.2</u>
836	<u>impressions-completed-current-copy</u>	<u>[job-prog]</u>	<u>4.4</u>
837	<u>(integer(0:MAX))</u>		
838	<u>k-octets (integer(0:MAX))</u>	<u>[RFC2911]</u>	<u>4.3.17.1</u>
839	<u>k-octets-processed (integer(0:MAX))</u>	<u>[RFC2911]</u>	<u>4.3.18.1</u>
840	<u>last-document (boolean)</u>	<u>[RFC2911]</u>	<u>4.3.12</u>
841	<u>media-sheets (integer(0:MAX))</u>	<u>[RFC2911]</u>	<u>4.3.17.3</u>
842	<u>media-sheets-completed (integer(0:MAX))</u>	<u>[RFC2911]</u>	<u>4.3.18.3</u>
843	<u>more-info (uri)</u>	<u>[RFC2911]</u>	<u>4.3.4</u>
844	<u>printer-up-time (integer (1:MAX))</u>	<u>[RFC2911]</u>	<u>4.3.14.4</u>
845	<u>sheet-completed-copy-number (integer(0:MAX))</u>	<u>[job-prog]</u>	<u>4.2</u>
846	<u>time-at-completed (integer (MIN:MAX))</u>	<u>[RFC2911]</u>	<u>4.3.14.3</u>
847	<u>time-at-creation (integer (MIN:MAX))</u>	<u>[RFC2911]</u>	<u>4.3.14.1</u>
848	<u>time-at-processing (integer (MIN:MAX))</u>	<u>[RFC2911]</u>	<u>4.3.14.2</u>
849	<u>warnings-count (integer(0:MAX))</u>	<u>[override]</u>	<u>6.1</u>
850			
851			
852	<u>Document Templates attributes:</u>	<u>Reference:</u>	<u>Section:</u>
853	<u>copies (integer(1:MAX))</u>	<u>[RFC2911]</u>	<u>4.2.5</u>
854	<u>cover-back (collection)</u>	<u>[prod-print]</u>	<u>3.1</u>
855	<u>media (type3 keyword name(MAX))</u>	<u>[prod-print]</u>	<u>3.1.1</u>
856	<u>media-col (collection)</u>	<u>[prod-print]</u>	<u>3.1.1</u>
857	<u>cover-front (collection)</u>	<u>[prod-print]</u>	<u>3.1</u>
858	<u>cover-type (type2 keyword)</u>	<u>[prod-print]</u>	<u>3.1.2</u>
859	<u>media (type3 keyword name(MAX))</u>	<u>[prod-print]</u>	<u>3.1.1</u>
860	<u>media-col (collection)</u>	<u>[prod-print]</u>	<u>3.1.1</u>
861	<u>cover-type (type2 keyword)</u>	<u>[prod-print]</u>	<u>3.1.2</u>
862	<u>finishings (lsetOf type2 enum)</u>	<u>[RFC2911]</u>	<u>4.2.6</u>
863		<u>[finish]</u>	<u>2</u>
864	<u>finishings-col (collection)</u>	<u>[prod-print]</u>	<u>3.2</u>
865	<u>finishing-template (name(MAX))</u>	<u>[prod-print]</u>	<u>3.2.1</u>
866	<u>stitching (collection)</u>	<u>[prod-print]</u>	<u>3.2.2</u>
867	<u>stitching-locations (lsetOf integer(0:MAX))</u>	<u>[prod-print]</u>	<u>3.2.2.3</u>
868	<u>stitching-offset (integer (0:MAX))</u>	<u>[prod-print]</u>	<u>3.2.2.2</u>
869	<u>stitching-reference-edge (type2 keyword)</u>	<u>[prod-print]</u>	<u>3.2.2.1</u>
870	<u>force-front-side (lsetOf integer(1:MAX))</u>	<u>[prod-print]</u>	<u>3.3</u>
871	<u>imposition-template (type2 keyword name(MAX))</u>	<u>[prod-print]</u>	<u>3.4</u>
872	<u>insert-sheet (lsetOf collection)</u>	<u>[prod-print]</u>	<u>3.5</u>
873	<u>insert-after-page-number (integer(0:MAX))</u>	<u>[prod-print]</u>	<u>3.5.1</u>
874	<u>insert-count (integer(0:MAX))</u>	<u>[prod-print]</u>	<u>3.5.2</u>
875	<u>media (type3 keyword name(MAX))</u>	<u>[prod-print]</u>	<u>3.5.3</u>
876	<u>media-col (collection)</u>	<u>[prod-print]</u>	<u>3.5.3</u>
877	<u>media (type3 keyword name(MAX))</u>	<u>[RFC2911]</u>	<u>4.2.11</u>

878	<u>media-col (collection)</u>	[prod-print]	3.13
879	<u>media-back-coating (type3 keyword </u>	[prod-print]	3.13.10
880	<u>name(MAX))</u>		
881	<u>media-color (type3 keyword name(MAX))</u>	[prod-print]	3.13.4
882	<u>media-front-coating (type3 keyword </u>	[prod-print]	3.13.10
883	<u>name(MAX))</u>		
884	<u>media-hole-count (integer(0:MAX))</u>	[prod-print]	3.13.6
885	<u>media-info (text(255))</u>	[prod-print]	3.13.3
886	<u>media-key (type3 keyword name(MAX))</u>	[prod-print]	3.13.1
887	<u>media-order-count (integer(1:MAX))</u>	[prod-print]	3.13.7
888	<u>media-preprinted (type3 keyword name(MAX))</u>	[prod-print]	3.13.5
889	<u>media-recycled (type3 keyword name(MAX))</u>	[prod-print]	3.13.11
890	<u>media-size (collection)</u>	[prod-print]	3.13.8
891	<u>x-dimension (integer(0:MAX))</u>	[prod-print]	3.13.8.1
892	<u>y-dimension (integer(0:MAX))</u>	[prod-print]	3.13.8.2
893	<u>media-type (type3 keyword name(MAX))</u>	[prod-print]	3.13.2
894	<u>media-weight-metric (integer(0:MAX))</u>	[prod-print]	3.13.9
895	<u>media-input-tray-check (type3 keyword </u>	[prod-print]	3.14
896	<u>name(MAX))</u>		
897	<u>number-up (integer(1:MAX))</u>	[RFC2911]	4.2.9
898	<u>orientation-requested (type2 enum)</u>	[RFC2911]	4.2.10
899	<u>output-bin (type2 keyword name(MAX))</u>	[output-bin]	2.1
900	<u>page-delivery (type2 keyword)</u>	[prod-print]	3.15
901	<u>page-order-received (type2 keyword)</u>	[prod-print]	3.16
902	<u>page-overrides (1setOf collection)</u>	[override]	5.2
903	<u>document-copies (1setOf rangeOfInteger(MAX))</u>	[override]	5.2.3
904	<u>input-documents (1setOf rangeOfInteger(MAX))</u>	[override]	5.2.1
905	<u>output-documents (1setOf rangeOfInteger(MAX))</u>	[override]	5.2.2
906	<u>pages (1setOf rangeOfInteger(MAX))</u>	[override]	5.2.4
907	<u><any other Job Template attributes that</u>		
908	<u>affect pages, such as media or media-col (</u>		
909	<u>page-ranges (1setOf rangeOfInteger(1:MAX))</u>	[RFC2911]	4.2.7
910	<u>pages-per-subset (1setOf integer(1:MAX))</u>	[prod-print]	5.3
911	<u>presentation-direction-number-up (type2</u>	[prod-print]	3.17
912	<u>keyword)</u>		
913	<u>print-quality (type2 enum)</u>	[RFC2911]	4.2.13
914	<u>printer-resolution (resolution)</u>	[RFC2911]	4.2.12
915	<u>separator-sheets (collection)</u>	[prod-print]	3.18
916	<u>media (type3 keyword name(MAX))</u>	[prod-print]	3.18.2
917	<u>media-col (collection)</u>	[prod-print]	3.18.2
918	<u>separator-sheets-type (type3 keyword </u>	[prod-print]	3.18.1
919	<u>name(MAX))</u>		
920	<u>sheet-collate (type2 keyword)</u>	[job-prog]	3.1
921	<u>sides (type2 keyword)</u>	[RFC2911]	4.2.8
922	<u>x-image-position (type2 keyword)</u>	[prod-print]	3.19.2
923	<u>x-image-shift (integer(MIN:MAX))</u>	[prod-print]	3.19.3

924	<u>x-side1-image-shift (integer(MIN:MAX))</u>	<u>[prod-print] 3.19.4</u>
925	<u>x-side2-image-shift (integer(MIN:MAX))</u>	<u>[prod-print] 3.19.5</u>
926	<u>y-image-position (type2 keyword)</u>	<u>[prod-print] 3.19.6</u>
927	<u>y-image-shift (integer(MIN:MAX))</u>	<u>[prod-print] 3.19.7</u>
928	<u>y-side1-image-shift (integer(MIN:MAX))</u>	<u>[prod-print] 3.19.8</u>
929	<u>y-side2-image-shift (integer(MIN:MAX))</u>	<u>[prod-print] 3.19.9</u>

930
931

932 Operation attributes:

933	<u>document-number</u>	<u>[this spec] 3</u>
-----	------------------------	----------------------

935 **12.2 Additional Enum Attribute Value Registrations for the “operations-supported” Printer**
936 **Attribute**

937 The following table lists all the new enum attribute values defined in this document as additional type2 enum values
938 for use with the “operations-supported” Printer Description attribute. These are to be registered according to the
939 procedures in RFC 2911 [RFC2911] section 6.1.

940

941	<u>Value</u>	<u>Name</u>	<u>Reference</u>	<u>Section:</u>
942	<u>-----</u>	<u>-----</u>	<u>-----</u>	<u>-----</u>
943	<u>operations-supported (type2 enum):</u>			
944	<u>0x0032</u>	<u>Cancel-Current-Document</u>	<u>[this-doc]</u>	<u>§2</u>
945	<u>0x0033</u>	<u>Cancel-Document</u>	<u>[this-doc]</u>	<u>§2</u>
946	<u>0x0034</u>	<u>Get-Document-Attributes</u>	<u>[this-doc]</u>	<u>§2</u>
947	<u>0x0035</u>	<u>Get-Documents</u>	<u>[this-doc]</u>	<u>§2</u>
948	<u>0x0036</u>	<u>Delete-Document</u>	<u>[this-doc]</u>	<u>§2</u>
949	<u>0x0037</u>	<u>Set-Document-Attributes</u>	<u>[this-doc]</u>	<u>§2</u>
950	<u>0x0038</u>	<u>Validate-Document</u>	<u>[this-doc]</u>	<u>§2</u>

951

952 The resulting enum attribute value registrations will be published in the
953 <http://www.iana.org/assignments/ipp-registrations> file.

954

955 **12.3 Operation Registrations**

956 The following table lists all of the operations defined in this document. These are to be registered according to the
957 procedures in RFC 2911 [RFC2911] section 6.4.

958

959	<u>Operations:</u>	<u>Reference:</u>	<u>Section:</u>
960	<u>Cancel-Current-Document</u>	<u>[this-doc]</u>	<u>§3</u>
961	<u>Cancel-Document</u>	<u>[this-doc]</u>	<u>§3</u>
962	<u>Get-Document-Attributes</u>	<u>[this-doc]</u>	<u>§3</u>
963	<u>Get-Documents</u>	<u>[this-doc]</u>	<u>§3</u>
964	<u>Delete-Document</u>	<u>[this-doc]</u>	<u>§3</u>
965	<u>Set-Document-Attributes</u>	<u>[this-doc]</u>	<u>§3</u>
966	<u>Validate-Document</u>	<u>[this-doc]</u>	<u>§3</u>

967

968 13 Internationalization Considerations

969 The internationalization considerations for this extension for handling the Document object are the same as for
970 handling the Job object in [RFC2911].

971 14 Security Considerations

972 The Document object should provide no more increased security considerations than the Job object. The Printer
973 MUST provide the same access control for Document objects as for Job objects.

974 15 Contributors**975 16 Acknowledgments****976 17 Author's Address**

977 Tom Hastings
978 Xerox Corporation
979 737 Hawaii St.
980 El Segundo, CA 90245
981
982 Phone: 310 333-6413
983 Fax: 310 333-5514
984 e-mail: hastings@cp10.es.xerox.com

985
986 Peter Zehler
987 Xerox Corporation
988 MS: 0128-30E
989 800 Phillips Road
990 Webster, NY 14580-9701
991
992 Phone: 1+585+2658755
993 Fax:
994 e-mail: PZehler@crt.xerox.com
995

996 Additional contributors:

997
998 Don Fullman, Xerox
999 Ira McDonald, High North

1000 18 Annex B: Change Log (informative)

1001 Version 0.3, 9 September 2002:

- 1002 1. Reformatted as an IEEE-ISTO standard and added the usual sections for a standard.
- 1003 2. Added "original-requesting-user-name" Operation attribute to Table 3.
- 1004 3. Added "y" to "output-bin" in Table 5 so it MAY be a Document Template attribute.
- 1005 4. Clarified the * and ** in Table 6 - Job and Document Description attributes.

- 1006 | 5. Added section 7 all of the Printer attributes defined In any IPP standard.
- 1007 | 6. Allocated operation-id enums in section 8 to the 7 Document operations.
- 1008 | 7. Added the conformance section 9
- 1009 | 8. Completed the IANA Considerations section 12.
- 1010
- 1011