

# PWG SBP-2 Native Imaging Communications Profile rev 0.1d

Data Movement Use Scenarios:  
How does the proposal really work?

# What's covered?

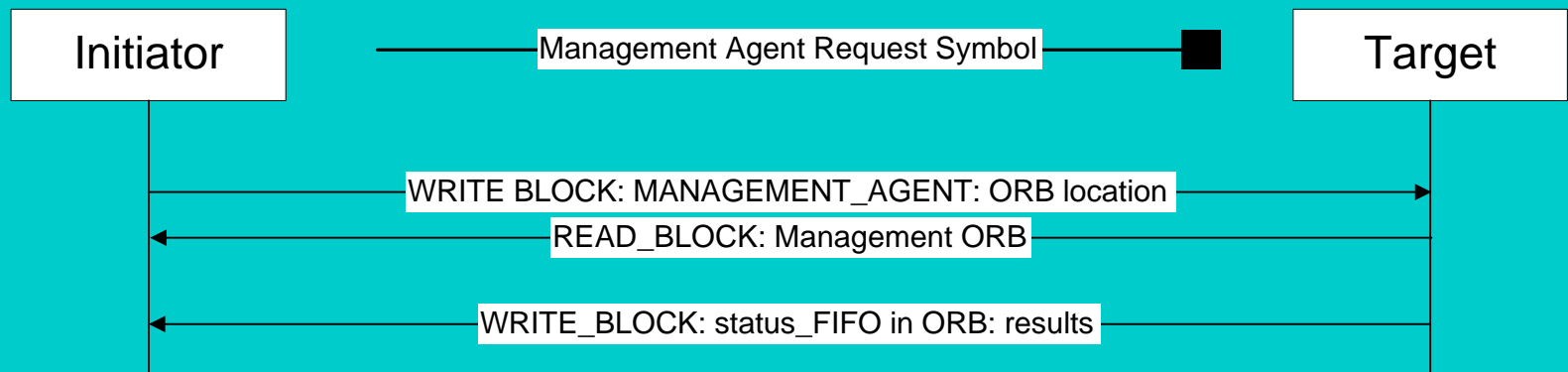
- Communication Building Blocks and Symbols
- Access Control Interactions
- Data Flow Use Scenarios
- Multiple-Instance Service Model
- Multiple-Service Device Model

# Communication Building Blocks

- Management Agent Requests
- Fetch Agent Task List Update
- Initiator to Target Data Transfer
- Target to Initiator Data Transfer
- Unsolicited Status Notification

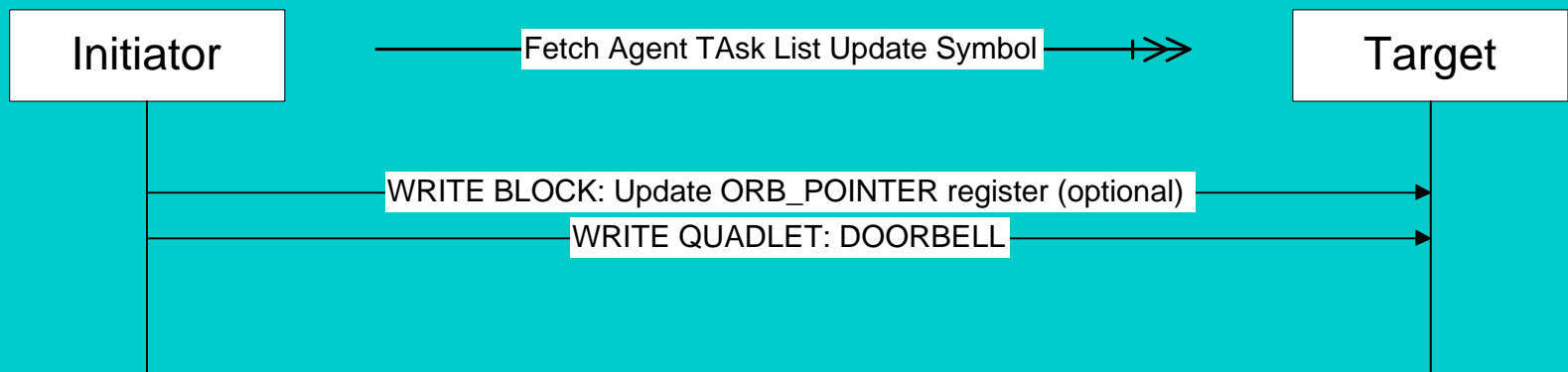
# Management Agent Request

- Separate from task list
- Only one request possible at a time



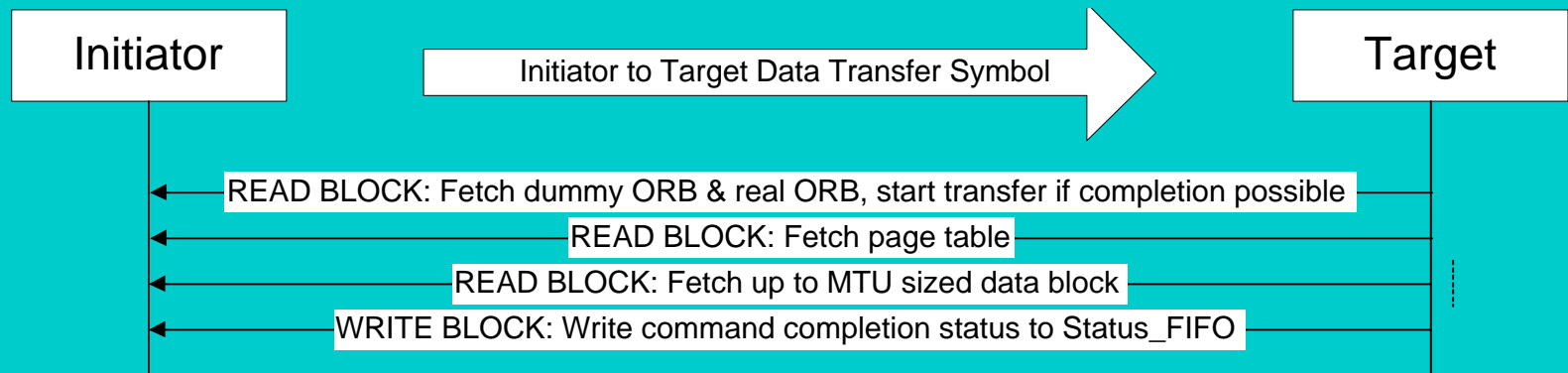
# Fetch Agent Task List Update

- Only involves ringing doorbell if every list always finishes with a dummy ORB
- Requires updating of ORB pointer & doorbell if dummy ORBs not used



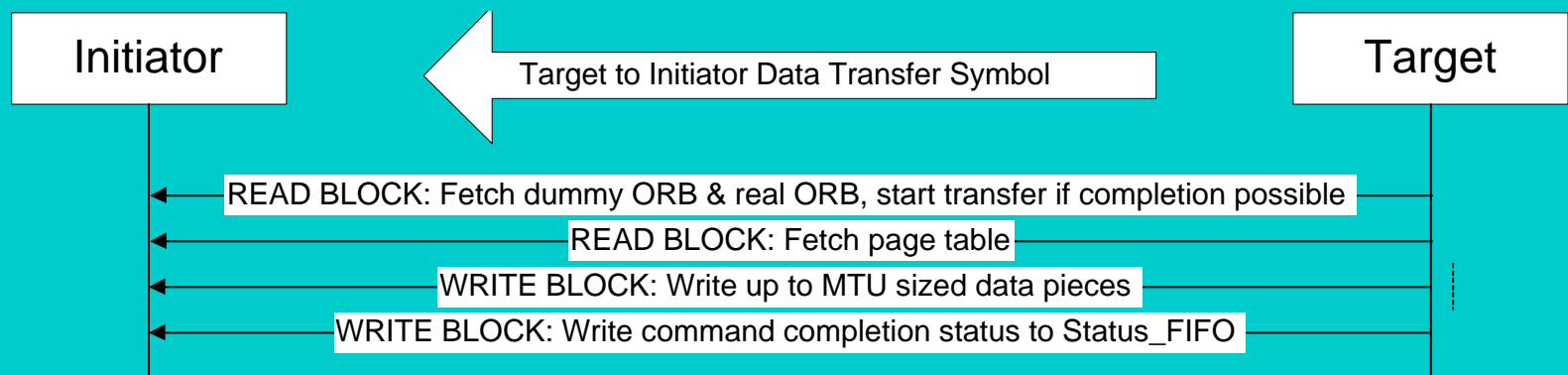
# Initiator to Target Data Transfer

- Covers all possible page table formats



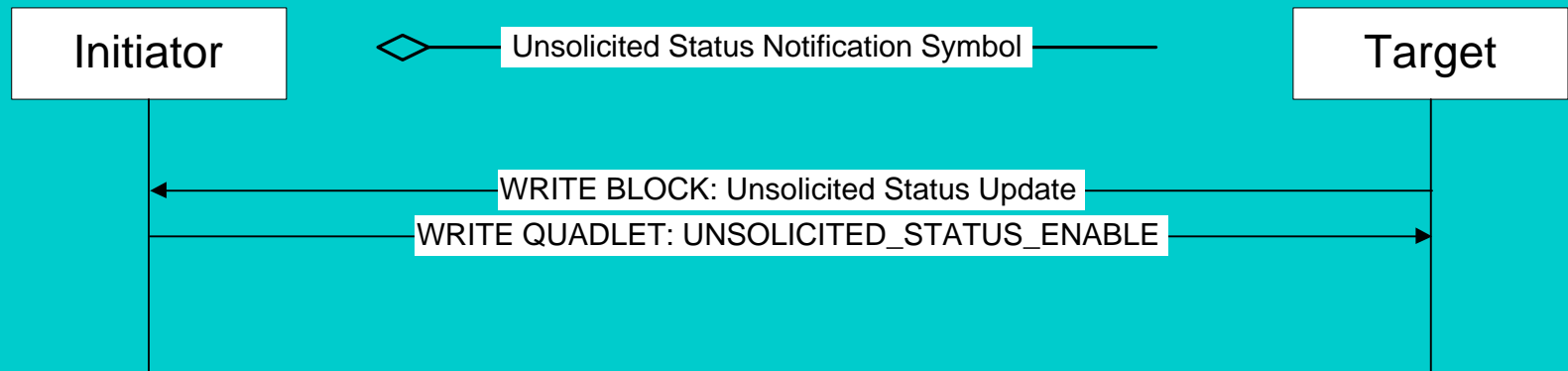
# Target to Initiator Data Transfer

- Successful
- Covers all possible page table formats



# Unsolicited Status Notification

- Data Available for Initiator
- Initiator Alive Request

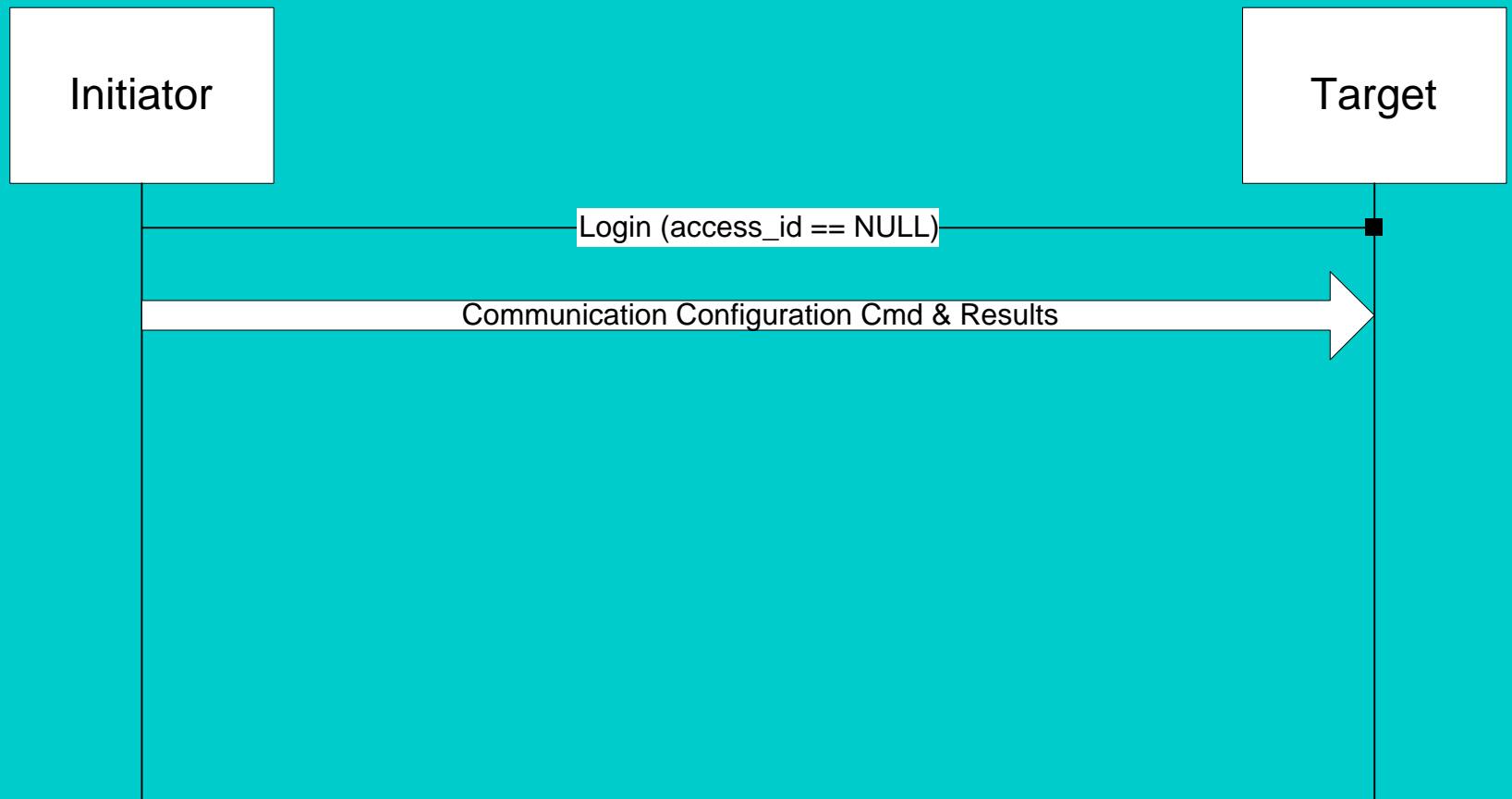




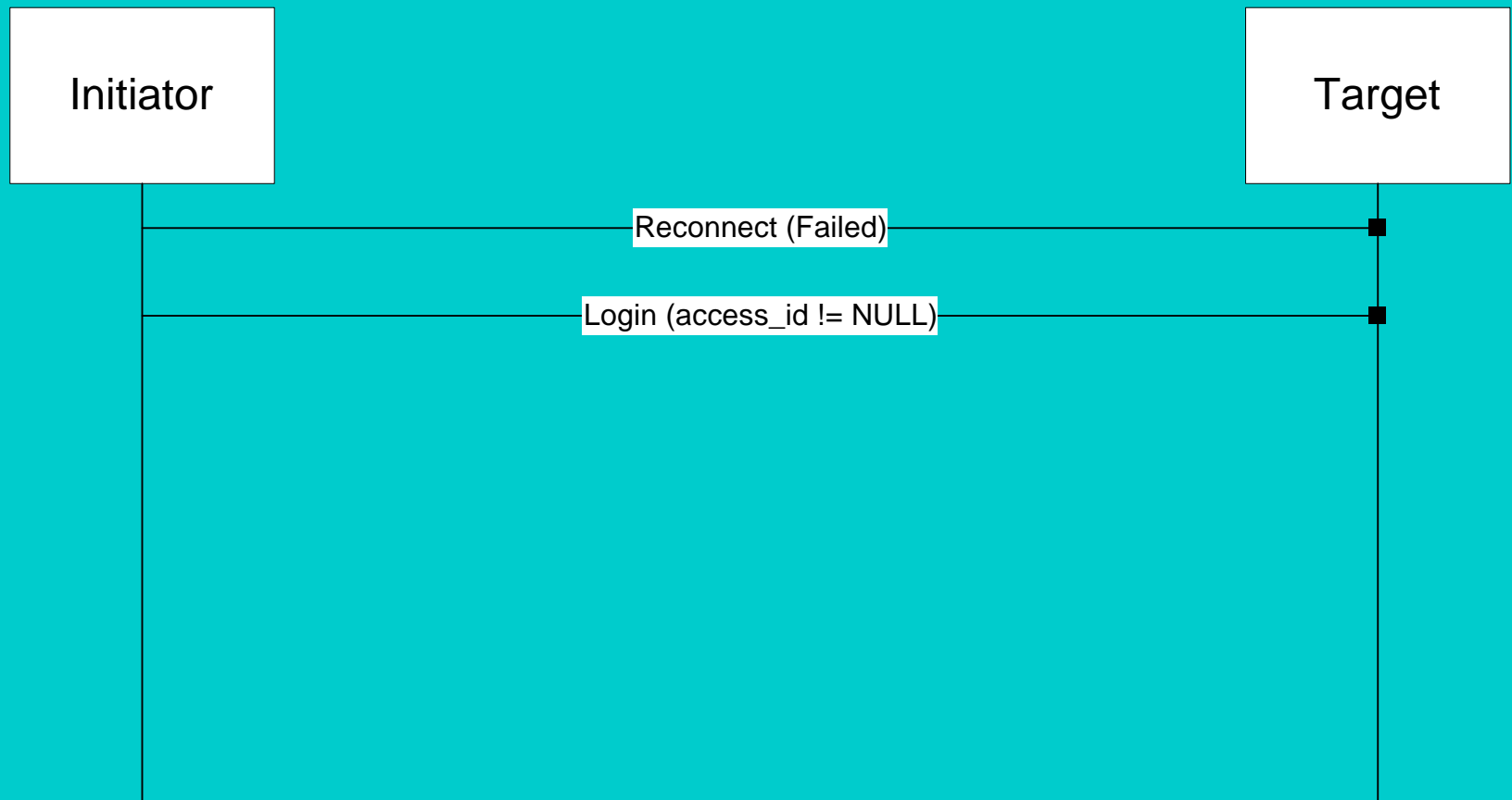
# Access Control Interactions

- Start Session
- Reconnect Session
- Initiator Controlled End Session
- Target Controlled End Session
- Implicitly Ended Session

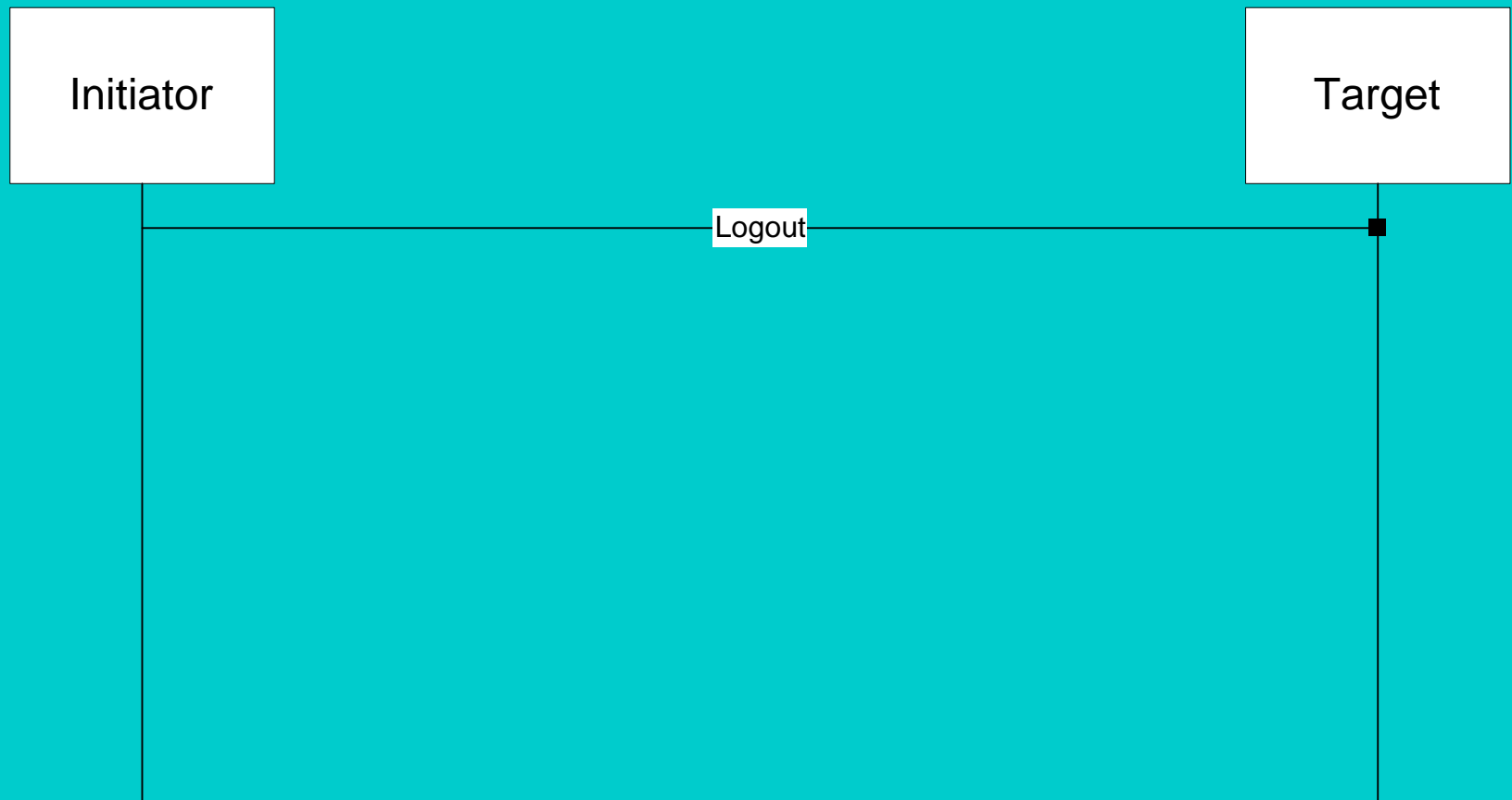
# Start Session



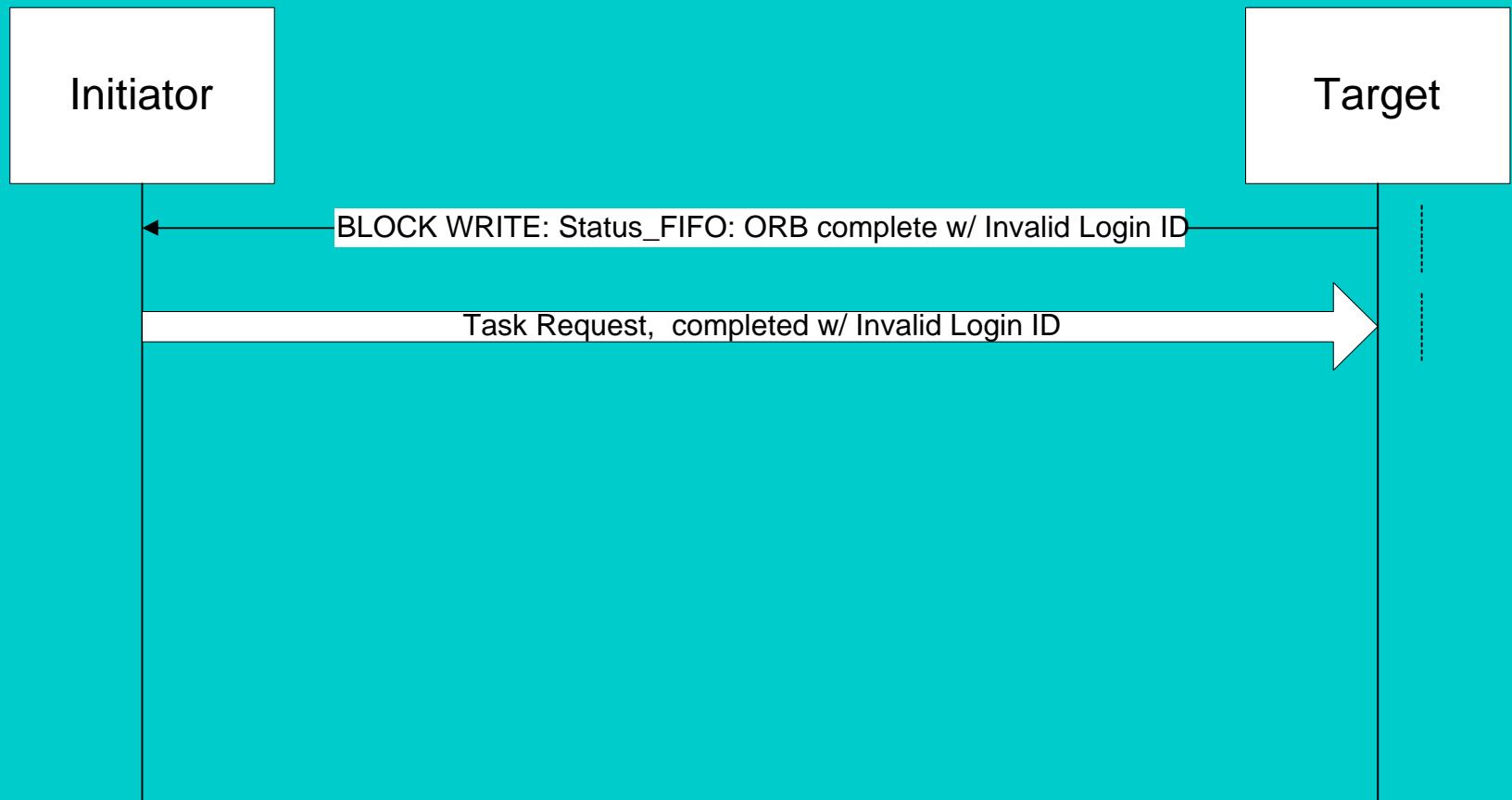
# Reconnect Session



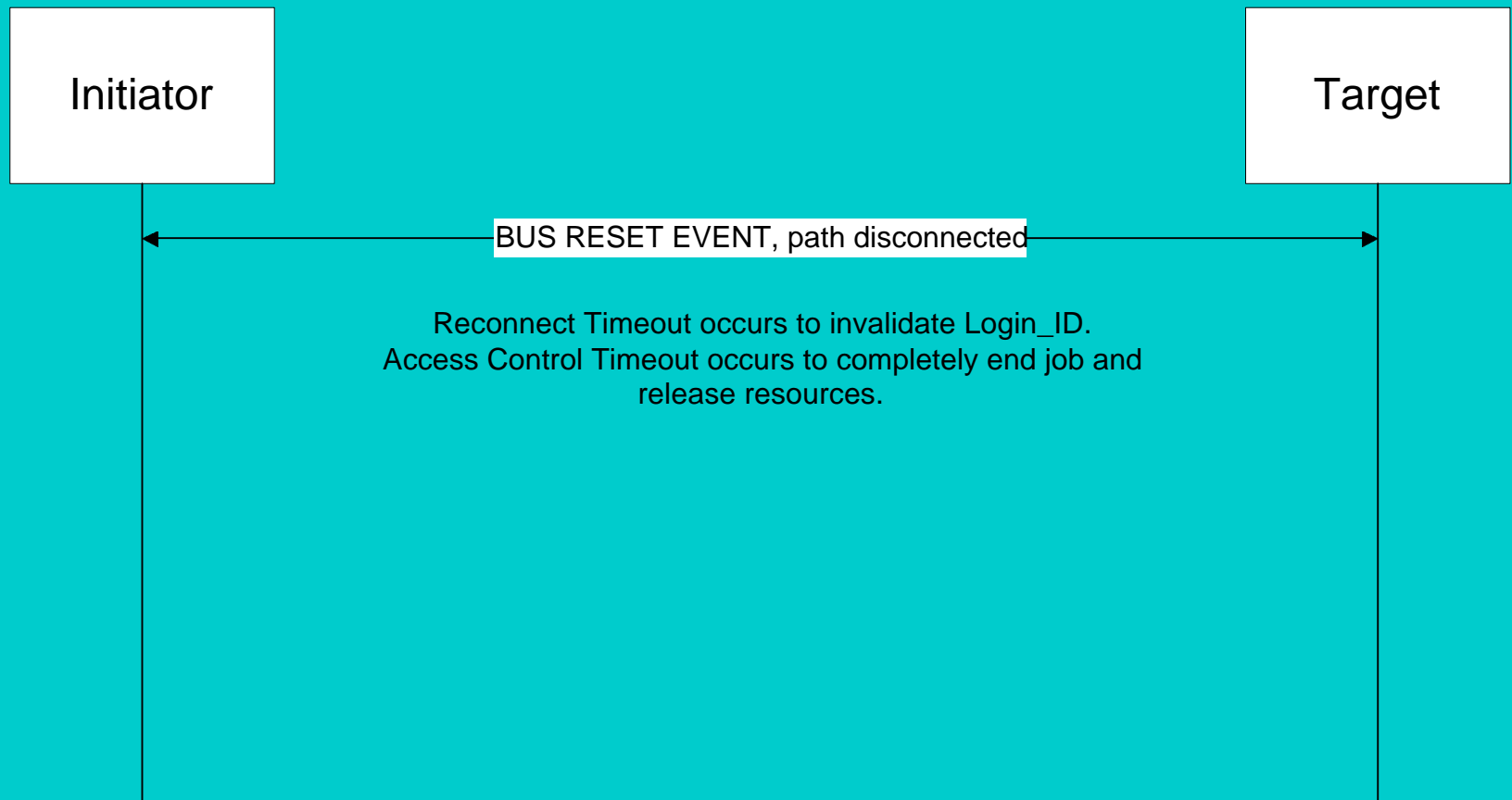
# Initiator Controlled End Session



# Target Controlled End Session



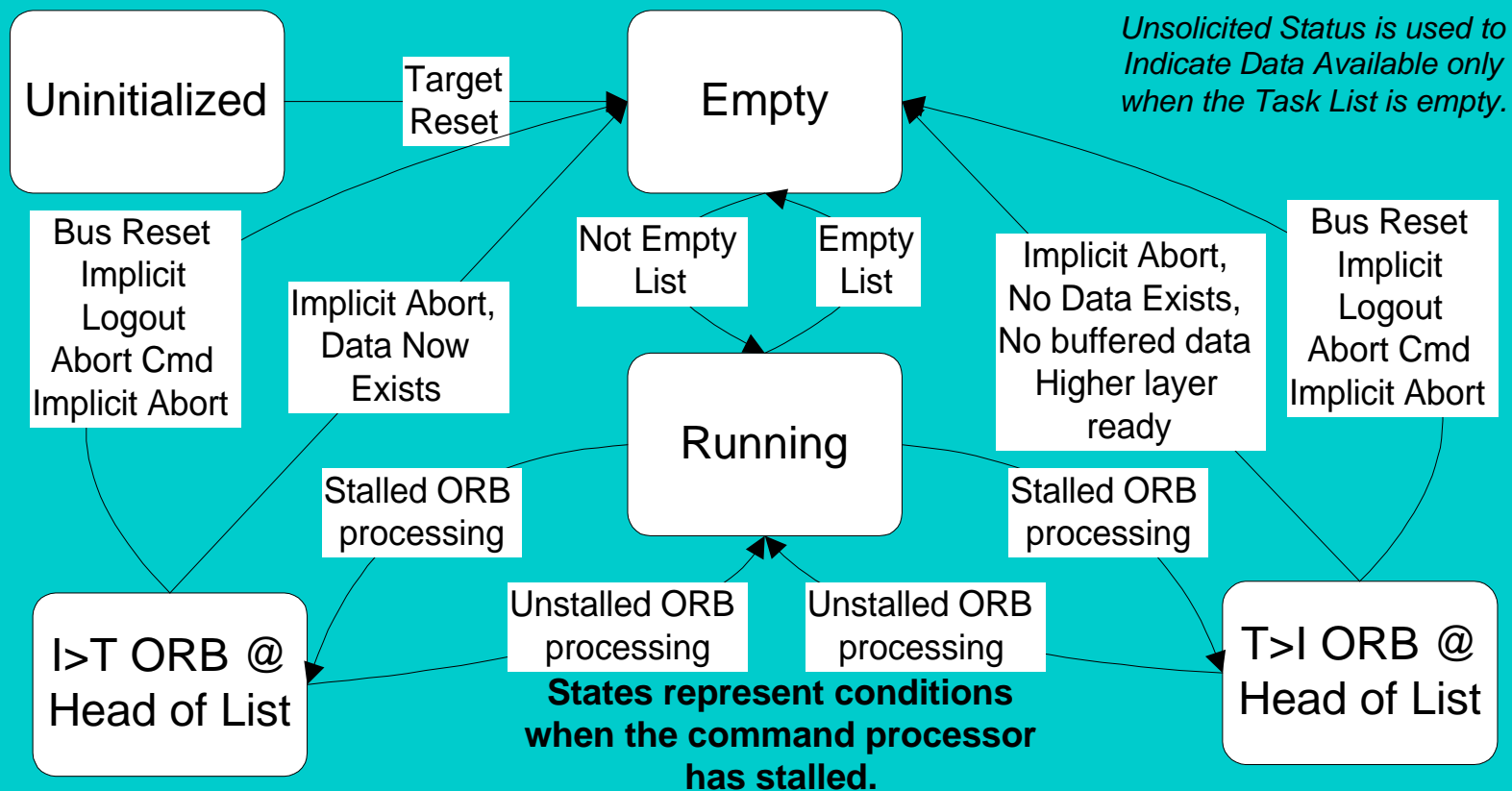
# Implicitly Ended Session



# Data Flow Use Scenarios

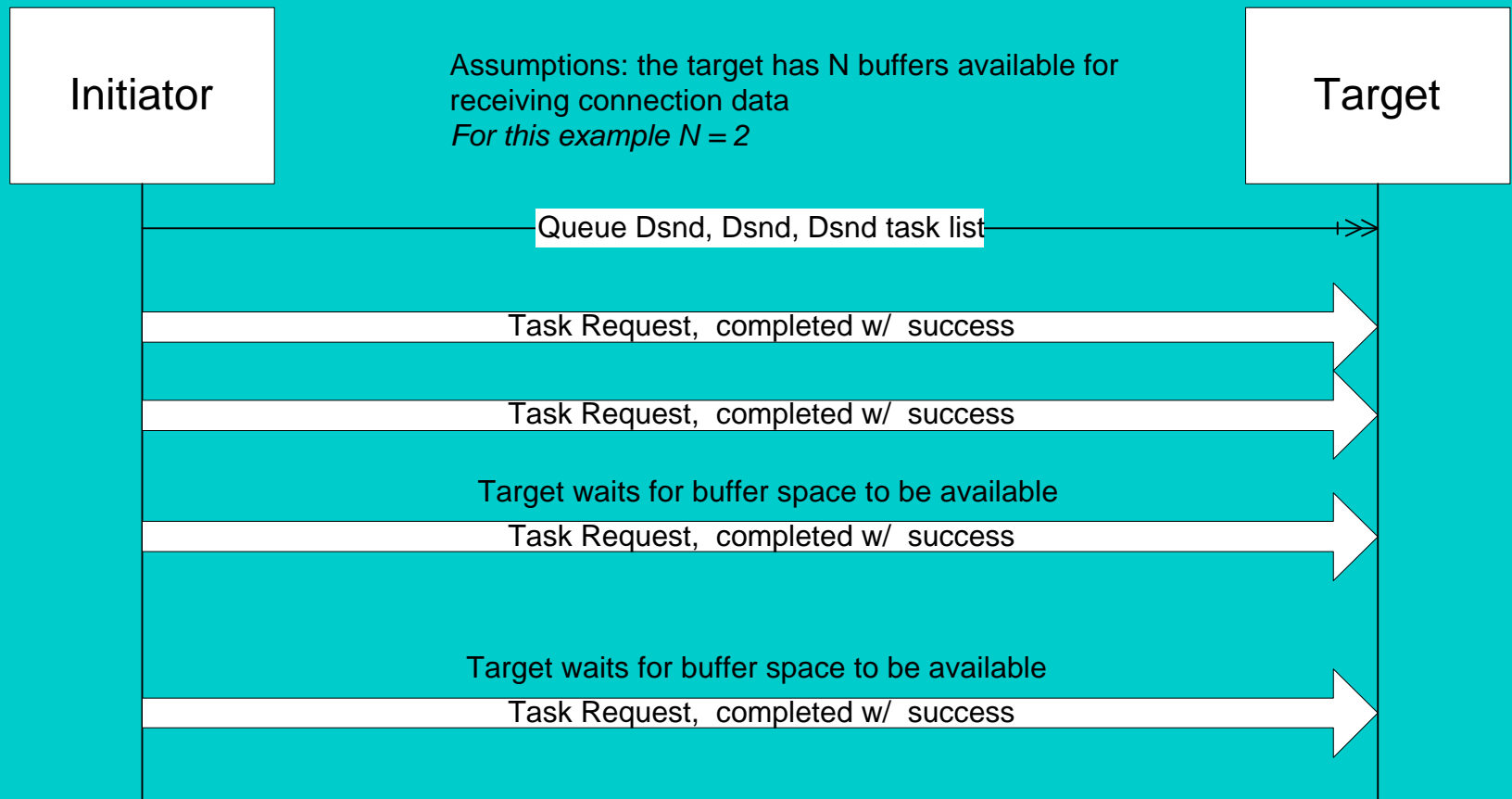
- Fetch Agent State Machine
- Initiator to Target Data (only)
- Target to Initiator Data (only)
- Unlinked Bidi Data
- Linked Bidi Data
- Multiple Cmd Bidi Data
- Unexpected Data Available

# Fetch Agent State Machine

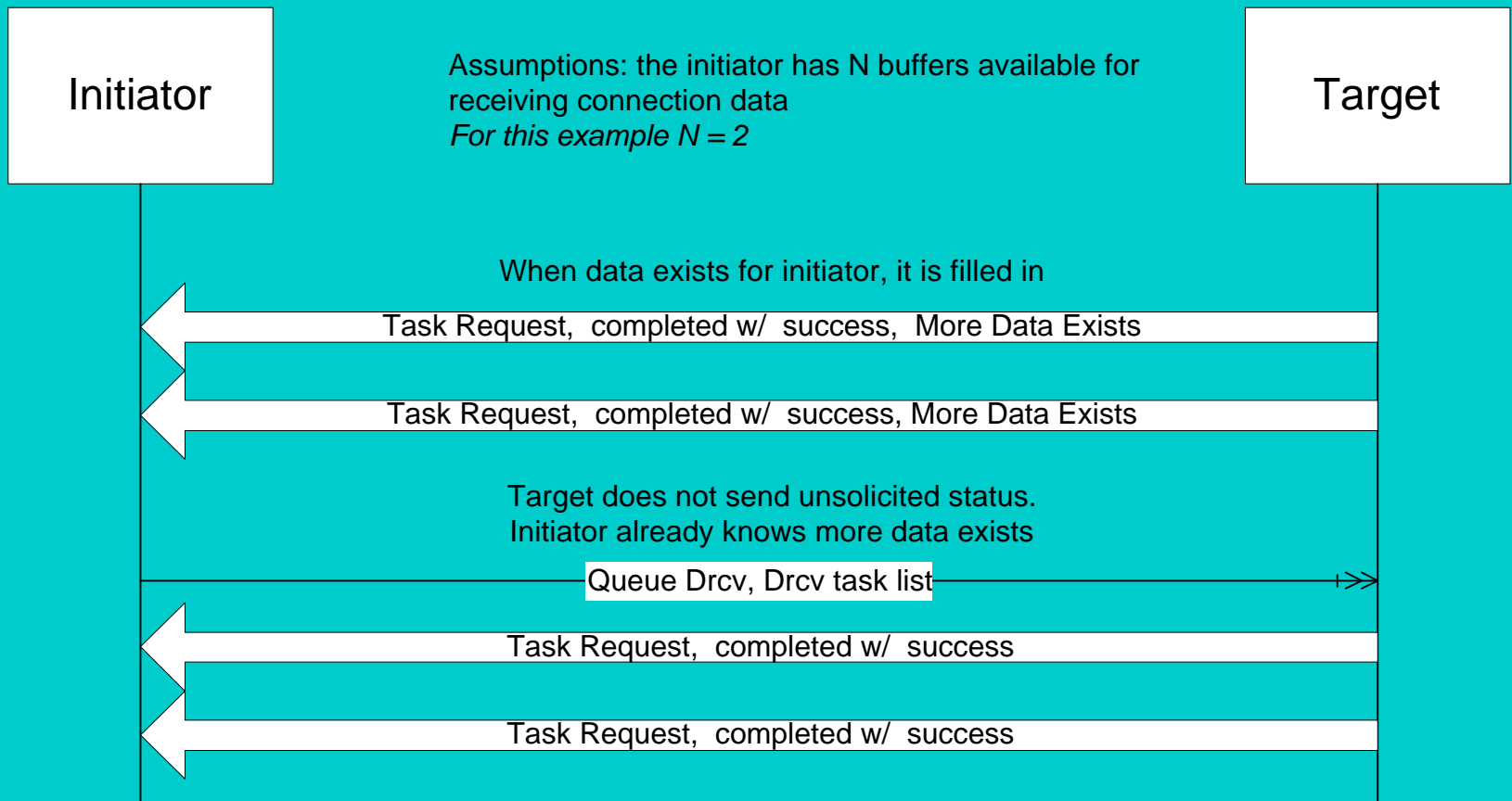




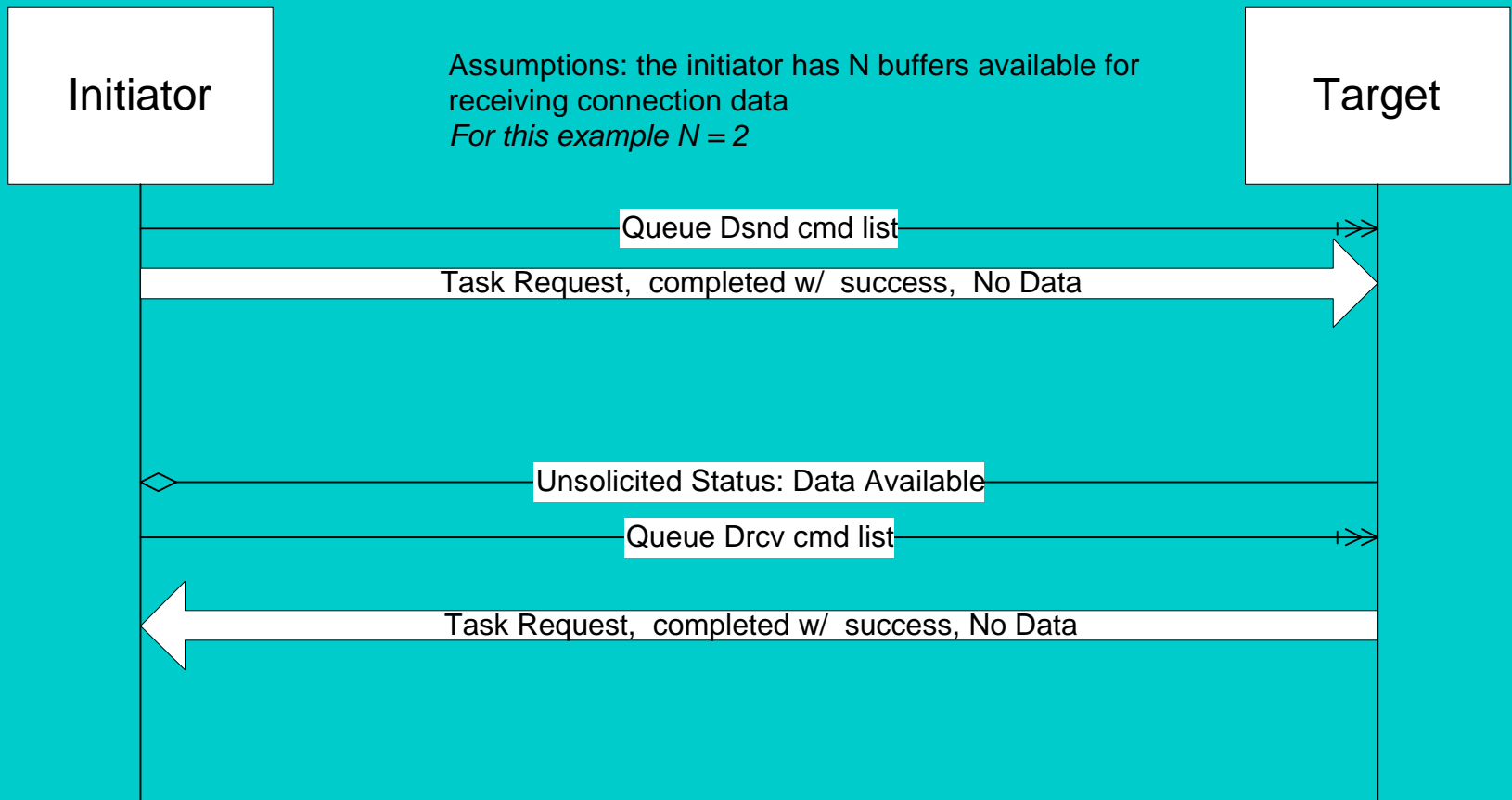
# Initiator to Target Data (only)



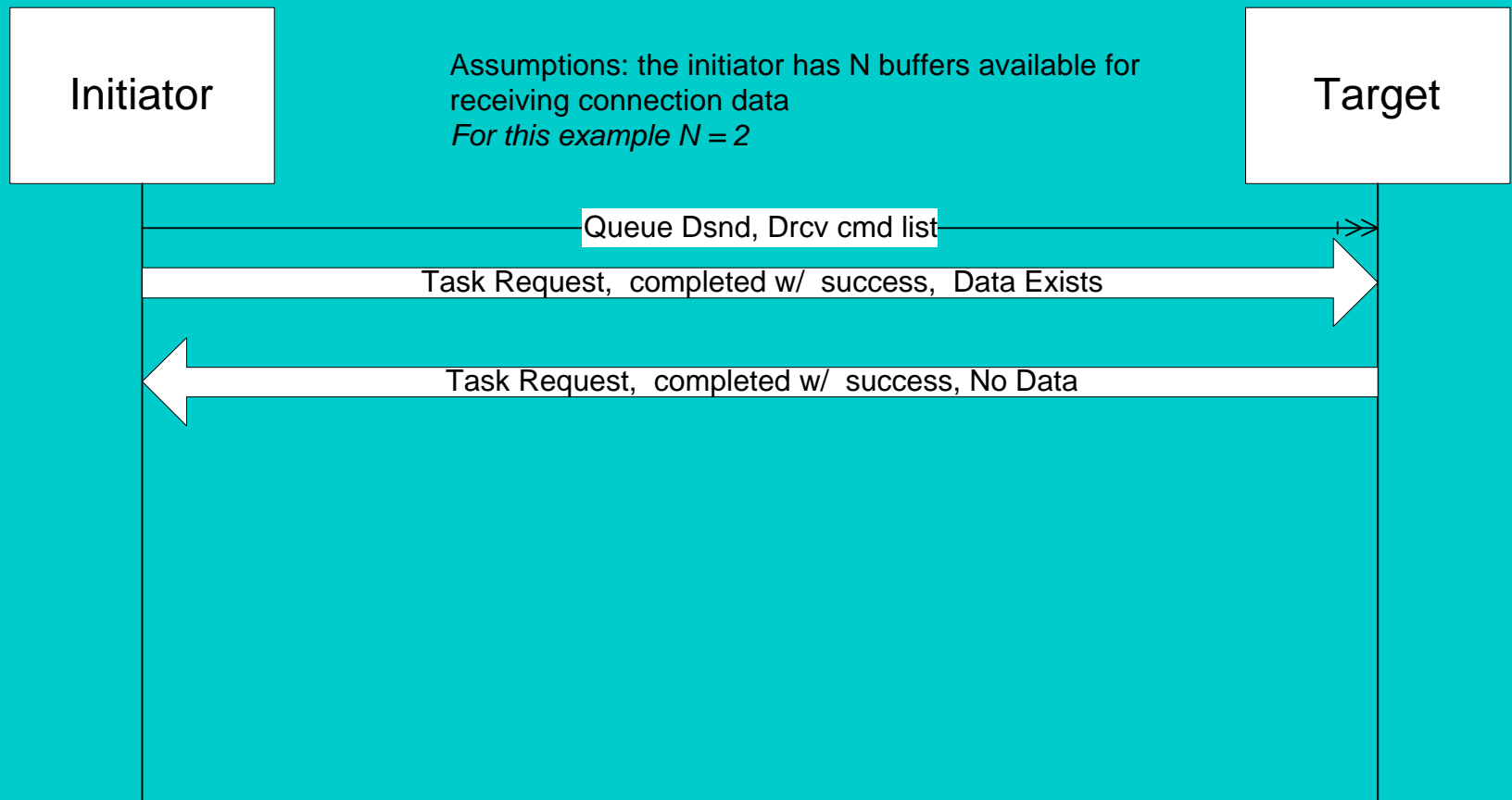
# Target to Initiator Data (only)



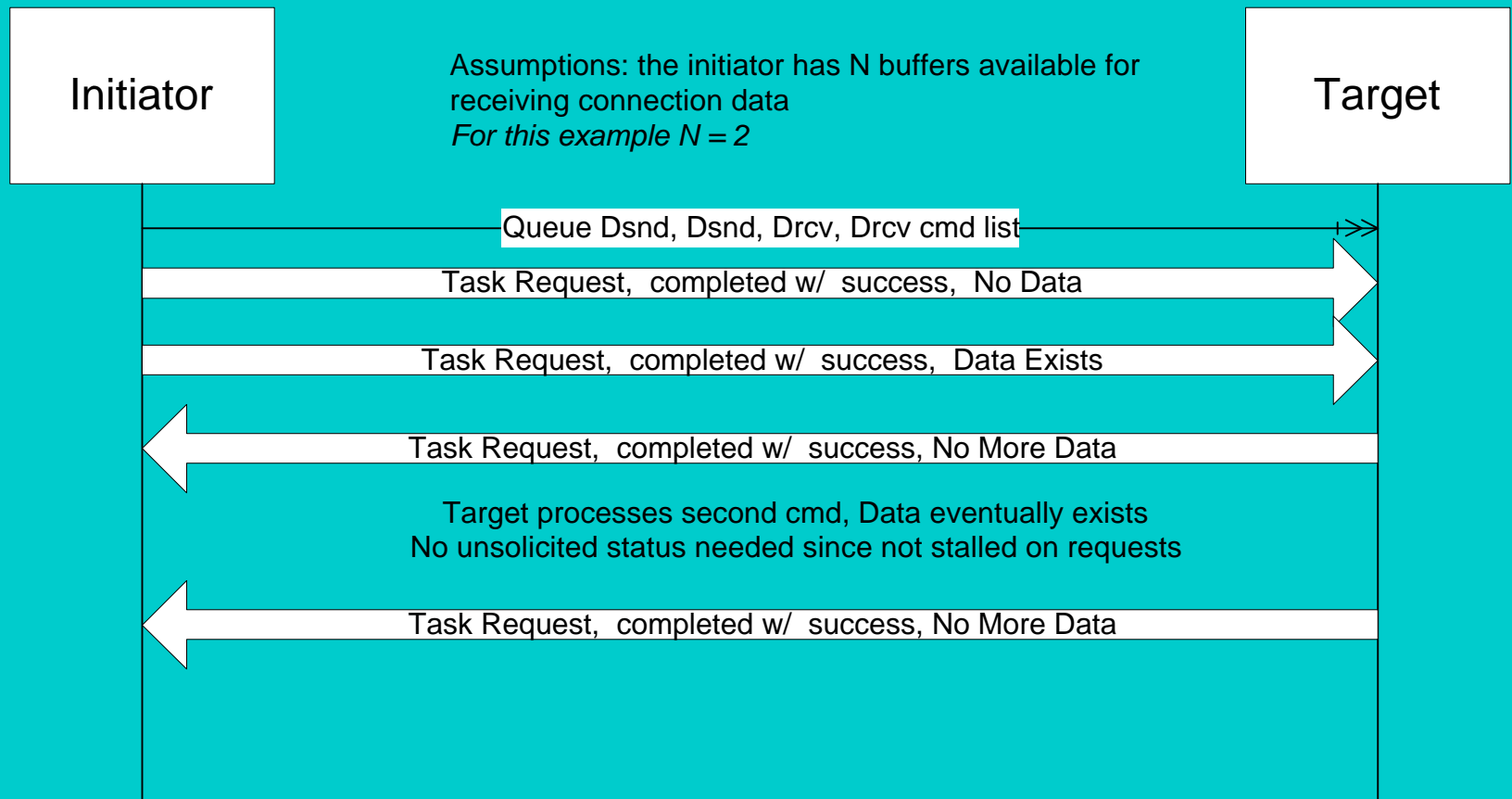
# Unlinked Bidi Data



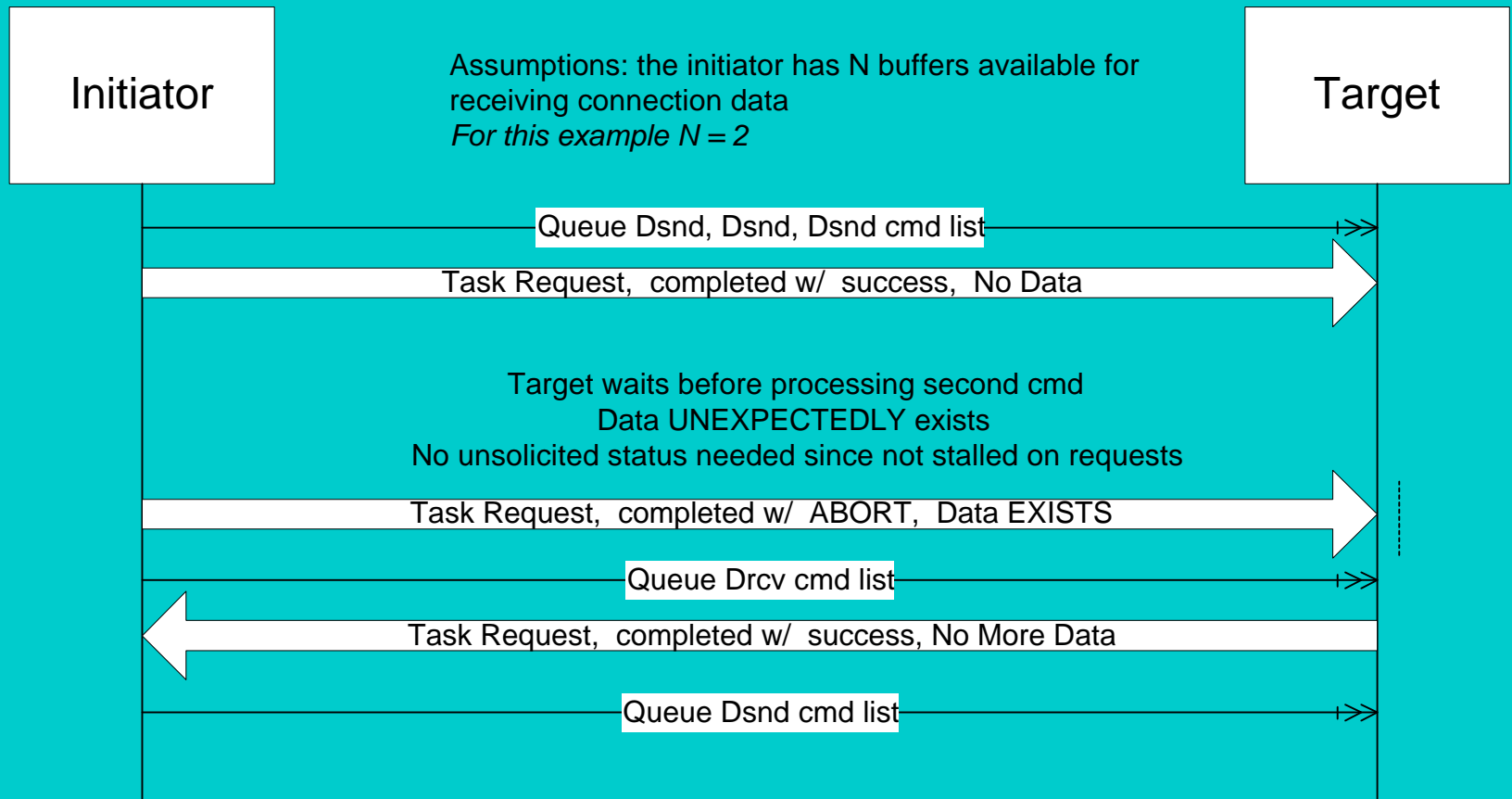
# Linked Bidi Data



# Multiple Cmd Bidi Data

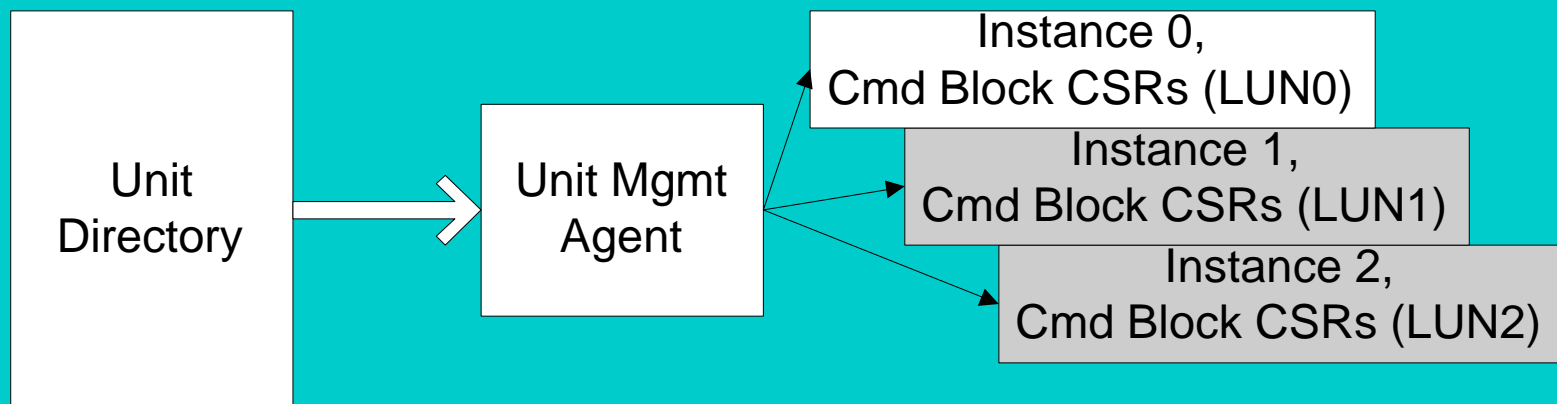


# Unexpected Data Available



# Multiple-Instance Service Model

- One Unit directory per type of service
- Each instance has a separate Logical Unit Number
- Each LUN has a separate, independent connection
- LUN numbers unique within the Unit



# Multiple-Service Device Model

- Multiple Services means Multiple Units
- Service includes entire binding
  - SBP-2; PWG profile; Application Cmd set

